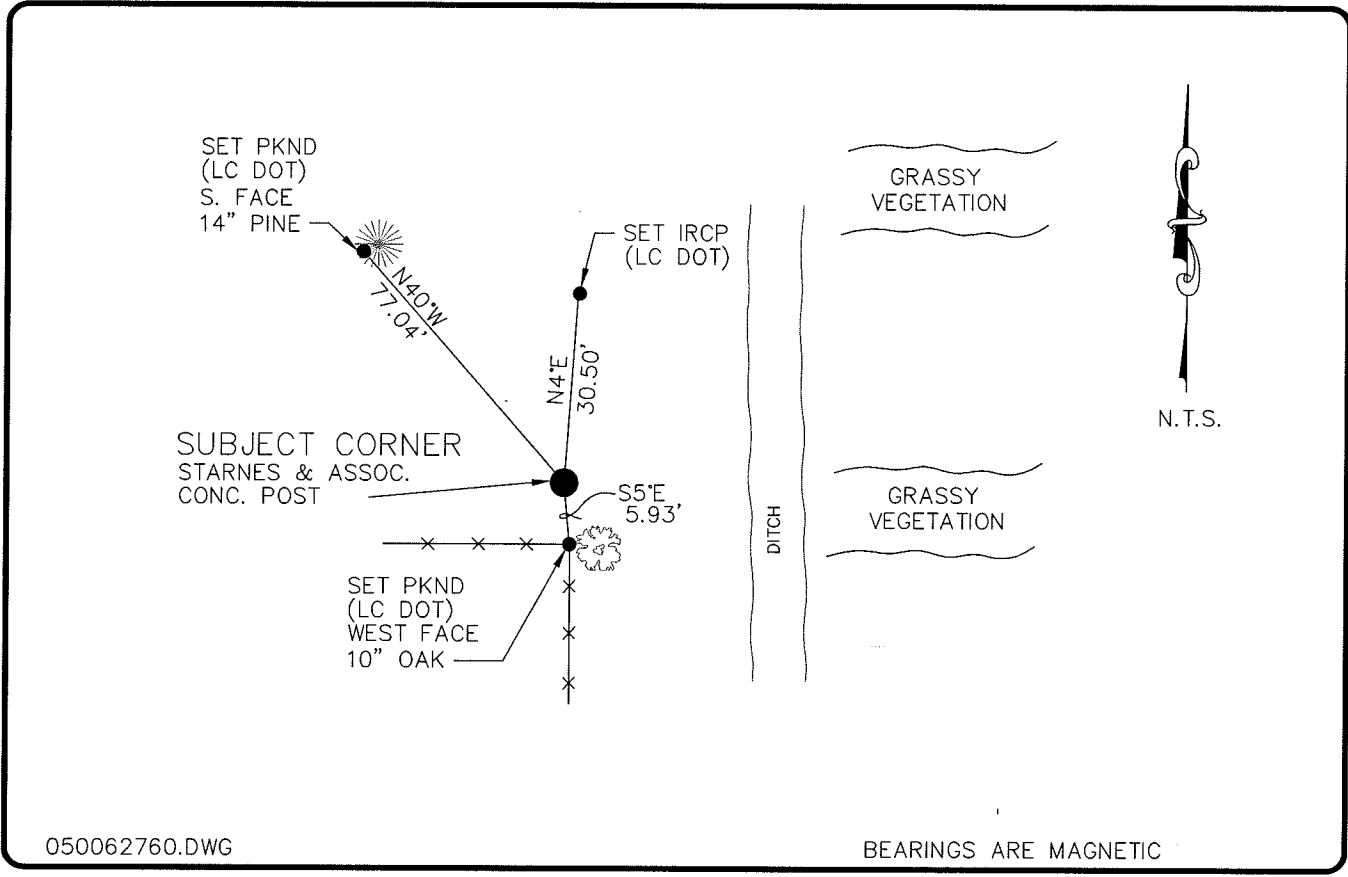


LAND CORNER RECORD

**PUBLIC WORKS
LEE COUNTY, FLORIDA**

Address - 1500 Monroe St., Ft. Myers, Fla. 33901

Phone : (239) 479-8900



050062760.DWG

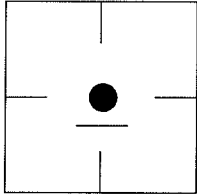
BEARINGS ARE MAGNETIC

COMMENTS:

CORNER DESCRIPTION

FOUND CONCRETE POST WITH ALUM. DISK
STAMPED STARNES AND ASSOCIATE PLS #2465.

CEN. SEC. Corner
Section 23
Township 43
Range 25



HORIZONTAL POSITION INFORMATION

Florida West Zone, NAD 1983(1990 Adjustment)
 Northing(ft) 866929.62 Easting(ft) 726194.05
 Latitude 26°43'06.83969" Longitude 81°47'07.70286"
 Scale Factor 0.99994679

EXISTING CERTIFIED CORNER RECORDS	
Document No.	Date
NO RECORDS FOUND	

The above documents are based on FDEP Bureau of Surveying and Mapping Record Information.

I hereby certify the monument and accessories shown above were field located on 10-21-04.

(Signature)
Arthur W. Parsons, County Surveyor
 Professional Surveyor and Mapper
 Florida Certificate No. 2987
 Date Signed 12-19-05
 Lee County Department of Transportation
 1500 Monroe Street
 Fort Myers, Florida 33901
 Phone: (239) 479-8900

POINT NO. 122

BLM REFERENCE NO. T43SR25E540340