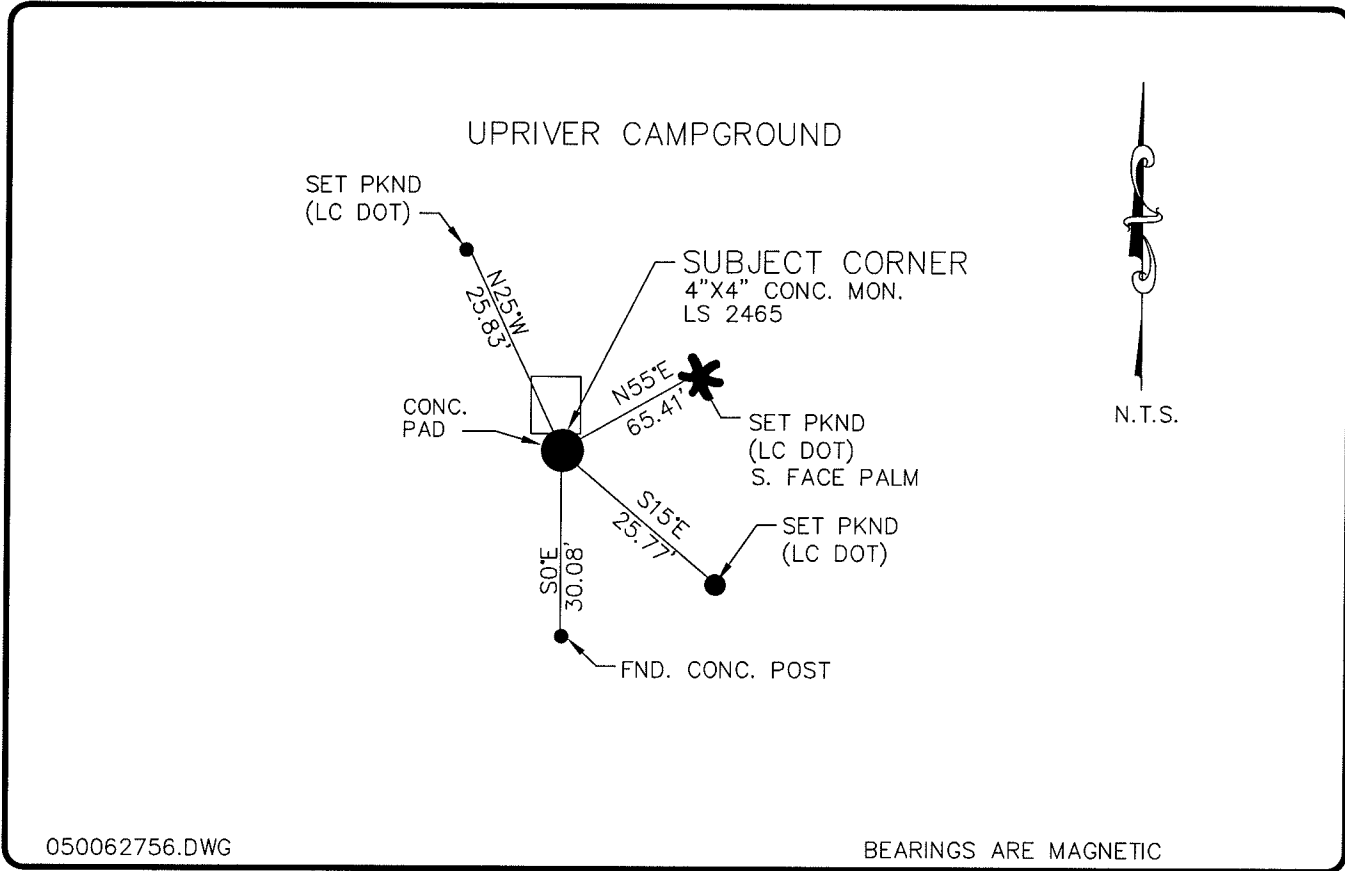


**LAND CORNER RECORD**

**PUBLIC WORKS  
LEE COUNTY, FLORIDA**

Address - 1500 Monroe St., Ft. Myers, Fla. 33901

Phone : (239) 479-8900



050062756.DWG

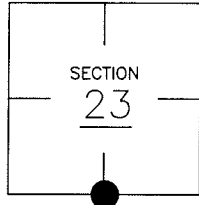
BEARINGS ARE MAGNETIC

**COMMENTS:**

STARNES FOUND A 6"X6" CONC. MON. 0.8' BELOW GROUND IN 1981 AND RESET CORNER WITH A 4"X4" CONC. MON. WITH BRASS DISK L.S. 2465 BEN HOLOMA C.C.R. DOC. 35218 RECOVERED STARNES MONUMENT IN 1996.

**CORNER DESCRIPTION**

S 1/4 Corner  
 Section 23  
 Township 43  
 Range 25



**HORIZONTAL POSITION INFORMATION**

Florida West Zone, NAD 1983(1990 Adjustment)  
 Northing(ft) 864277.44 Easting(ft) 726176.86  
 Latitude 26°42'40.57368" Longitude 81°47'07.94121"  
 Scale Factor 0.99994679

**EXISTING CERTIFIED CORNER RECORDS**

Document No.	Date
<u>13837</u>	<u>11-21-81</u>
<u>35218</u>	<u>3-20-90</u>

The above documents are based on FDEP Bureau of Surveying and Mapping Record Information.

I hereby certify the monument and accessories shown above were field located on 10-05-04.

**Arthur W. Parsons, County Surveyor**  
 Professional Surveyor and Mapper  
 Florida Certificate No. 2987  
 Date Signed 12-19-05

Lee County Department of Transportation  
 1500 Monroe Street  
 Fort Myers, Florida 33901  
 Phone: (239) 479-8900

POINT NO. 121

BLM REFERENCE NO. T43SR25E 540 300