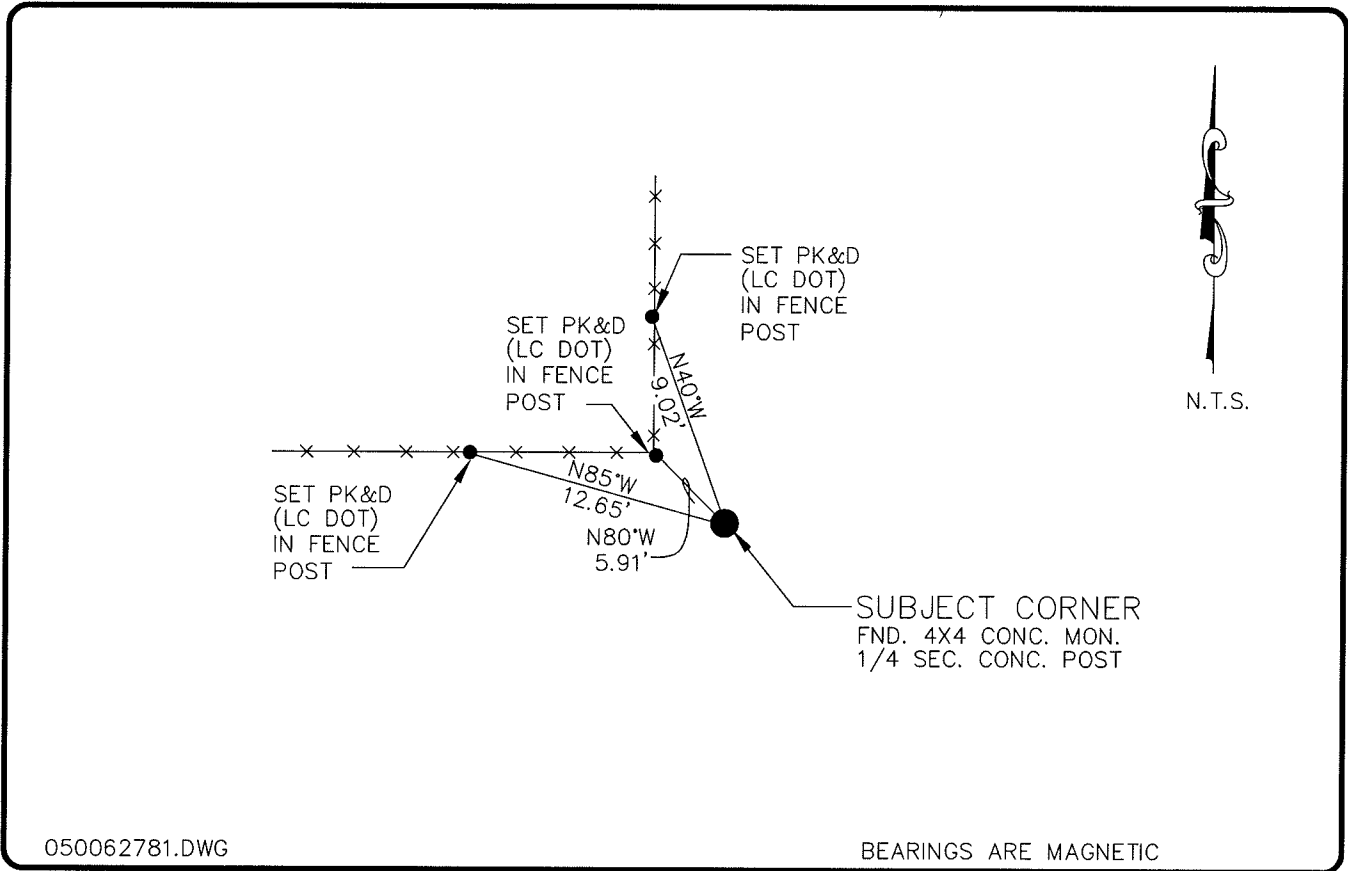


LAND CORNER RECORD

**PUBLIC WORKS
LEE COUNTY, FLORIDA**

Address - 1500 Monroe St., Ft. Myers, Fla. 33901

Phone : (239) 479-8900



050062781.DWG

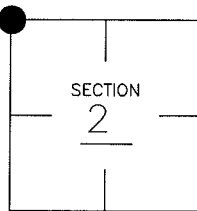
BEARINGS ARE MAGNETIC

COMMENTS:

FOUND 4"x4" CONC. POST SET BY JOHNSON DESCRIBED ON STARNES SECTION MAP. ACCEPTED AS LOCALLY USED SECTION CORNER.

CORNER DESCRIPTION

NW Corner
Section 2
Township 43
Range 25



HORIZONTAL POSITION INFORMATION

Florida West Zone, NAD 1983(1990 Adjustment)
 Northing(ft) 885510.83 Easting(ft) 723604.98
 Latitude 26°46'10.908045" Longitude 81°47'35.923183'
 Scale Factor 0.99994639

EXISTING CERTIFIED CORNER RECORDS

Document No.	Date
<u>36585</u>	<u>2-12-84</u>

The above documents are based on FDEP Bureau of Surveying and Mapping Record Information.

I hereby certify the monument and accessories shown above were field located on 3-3-05.

Arthur W. Parsons, County Surveyor
 Professional Surveyor and Mapper
 Florida Certificate No. 2987
 Date Signed 12-19-05

Lee County Department of Transportation
 1500 Monroe Street
 Fort Myers, Florida 33901
 Phone: (239) 479-8900

POINT NO. 166

BLM REFERENCE NO. T43SR25E500700