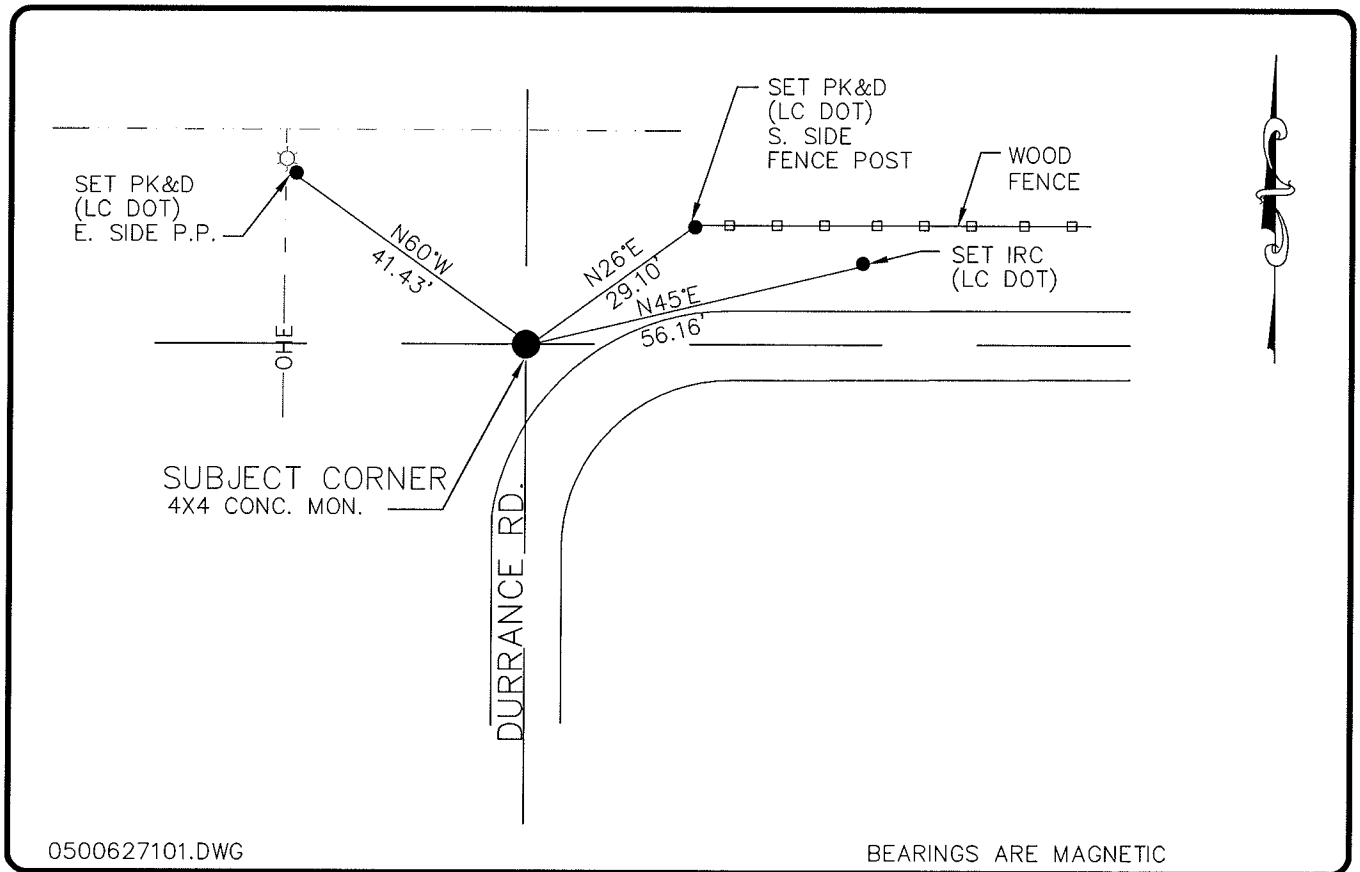


LAND CORNER RECORD

**PUBLIC WORKS
LEE COUNTY, FLORIDA**

Address - 1500 Monroe St., Ft. Myers, Fla. 33901

Phone : (239) 479-8900



COMMENTS:

STARNES RECOVERED AND REFERENCED
IN CONC. MON. MONUMENT FOUND MATCHES
STARNES LOCATION.

CORNER DESCRIPTION

NW Corner	●
Section	14
Township	43
Range	25

SECTION
14

HORIZONTAL POSITION INFORMATION

Florida West Zone, NAD 1983(1990 Adjustment)
 Northing(ft) 874926.43 Easting(ft) 723578.99
 Latitude 26°44'26.082438" Longitude 81°47'36.399504"
 Scale Factor 0.99994638

EXISTING CERTIFIED CORNER RECORDS

Document No.	Date
13832	8-17-81

The above documents are based on FDEP Bureau of Surveying and Mapping Record Information.

I hereby certify the monument and accessories shown above were field located on 7-06-04.

(Signature)

Arthur W. Parsons, County Surveyor
 Professional Surveyor and Mapper
 Florida Certificate No. 2987
 Date Signed 12-19-2005

Lee County Department of Transportation
 1500 Monroe Street
 Fort Myers, Florida 33901
 Phone: (239) 479-8900

POINT NO. 13

BLM REFERENCE NO. T43SR25E500500