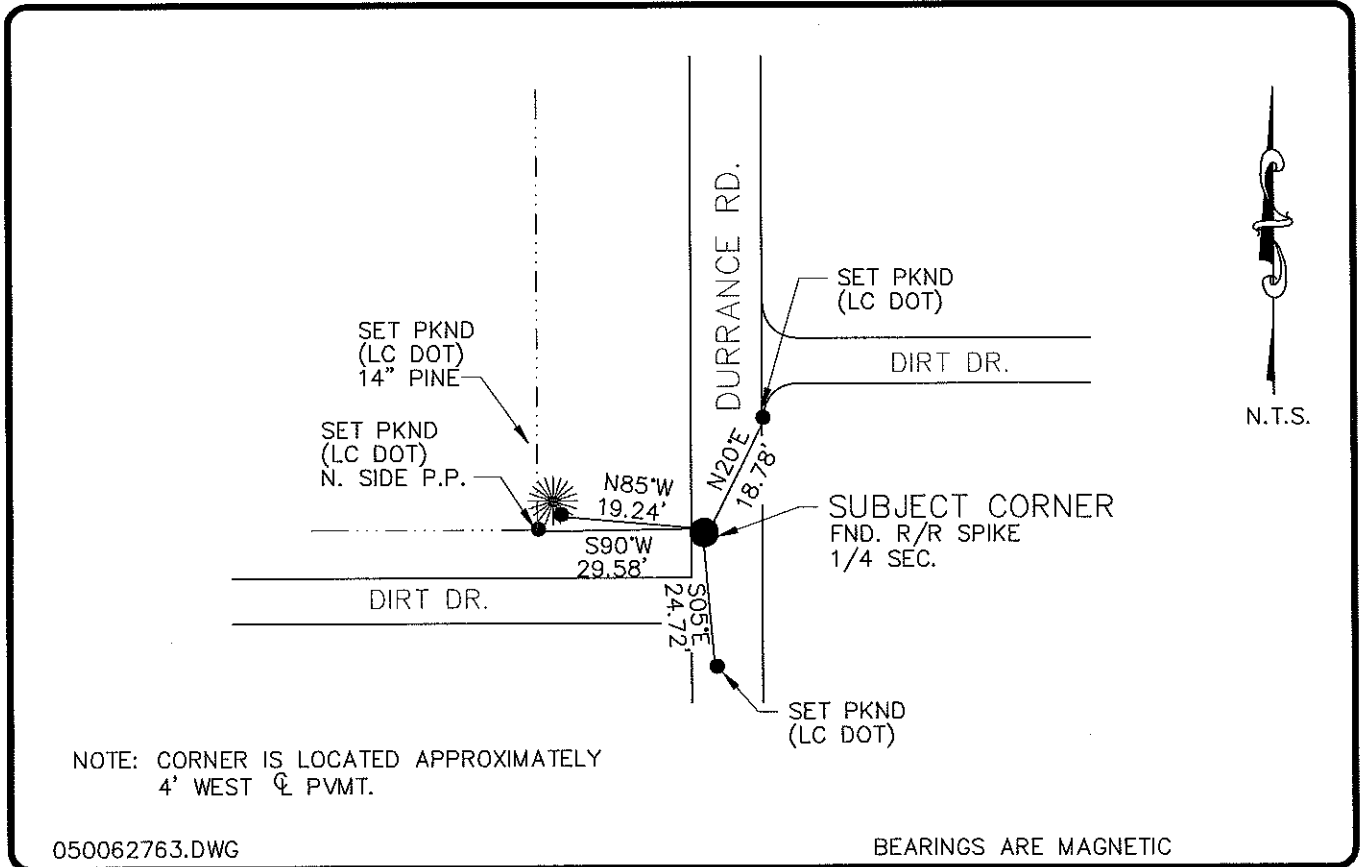


LAND CORNER RECORD

PUBLIC WORKS
LEE COUNTY, FLORIDA

Address - 1500 Monroe St., Ft. Myers, Fla. 33901

Phone : (239) 479-8900



NOTE: CORNER IS LOCATED APPROXIMATELY
4' WEST ϕ PVMT.

050062763.DWG

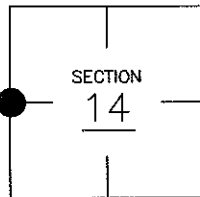
BEARINGS ARE MAGNETIC

COMMENTS:

STARNES FOUND A 80d NAIL & DISK
AT THE WEST 1/4 CORNER IN 1981
AND REPLACED IT WITH A RAILROAD
SPIKE LOCALLY ACCEPTED AS 1/4 CORNER.

CORNER DESCRIPTION

W 1/4 Corner
Section 14
Township 43
Range 25



HORIZONTAL POSITION INFORMATION

Florida West Zone, NAD 1983(1990 Adjustment)

Northing(ft) 872271.90 Easting(ft) 723577.64

Latitude 26°43'59.79222" Longitude 81°47'36.46197"

Scale Factor 0.99994638

EXISTING CERTIFIED CORNER RECORDS

Document No.	Date
<u>13831</u>	<u>8-17-81</u>

The above documents are based on FDEP Bureau
of Surveying and Mapping Record Information.

I hereby certify the monument and accessories
shown above were field located on 10-5-04.

Arthur W. Parsons, County Surveyor
Professional Surveyor and Mapper
Florida Certificate No. 2987
Date Signed _____

Lee County Department of Transportation
1500 Monroe Street
Fort Myers, Florida 33901
Phone: (239) 479-8900

POINT NO. 119

BLM REFERENCE NO. T43SR25E500400

440