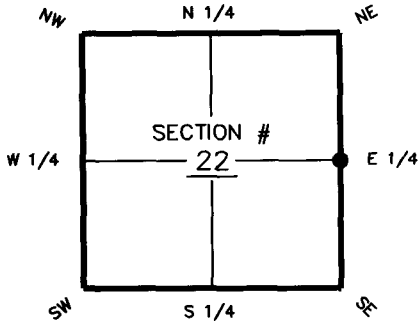


# FLORIDA DEPARTMENT OF ENVIRONMENTAL PROTECTION CERTIFIED CORNER RECORD

DOC. # 089783

CORNER DESCRIPTION: MONUMENTATION DESCRIPTION (EVIDENCE FOUND OR METHOD TO SET)

Depict corner with  SET 4" X 4" CONC. MON. WITH F.D.O.T. BRASS DISK



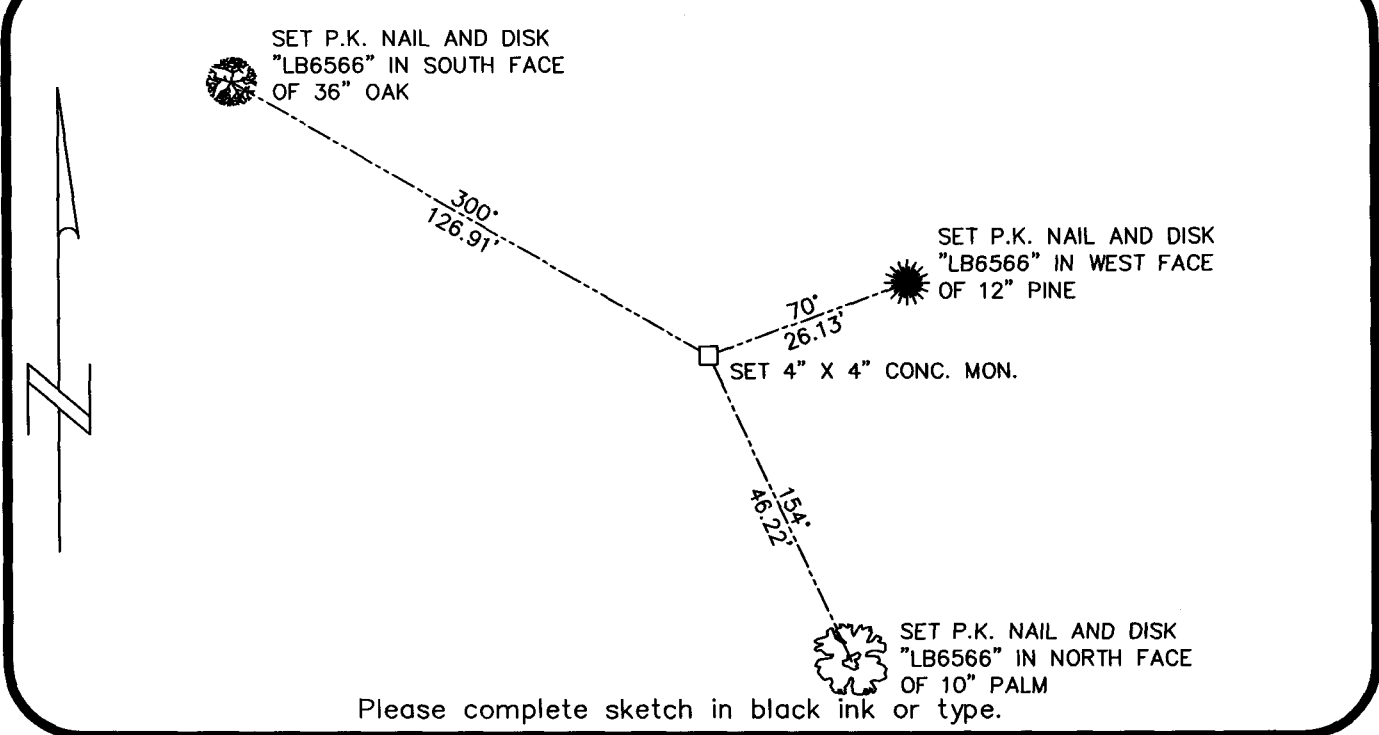
HORIZONTAL POSITION INFORMATION ( if determined ):

Latitude 26° 43' 07.1037" N Longitude 81° 47' 36.8383" W  
 Y(NORTHING-Ft.) 866951.8608 X(EASTING-Ft.) 723552.1304 Zone WEST  
 Convergence 0° 05' 34.1338" Scale factor 0.99994638

E1/4 corner of Section 22  
Twp 43 S, Rge 25 E  
 Tallahassee Base Meridian,  
Lee County(s), Florida

Coordinate determination (circle one): Field traverse (GPS)  
 Horizontal datum (circle one): NAD27 NAD83(1986) (NAD83(1990)) other (explain)  
 Accuracy (circle one): 1st (2nd) 3rd other \_\_\_\_\_

ALL BEARINGS ARE BASED ON MAGNETIC NORTH



Please complete sketch in black ink or type.

SURVEYORS CERTIFICATE:

I certify the monument and accessories indicated above were field located on 07-2006

Jason L. Creed 6008  
 SIGNATURE PSM NO.  
McKIM & CREED, PA 6566  
 FIRM OR AGENCY LB NO.  
6241 ARC WAY ADDRESS  
FORT MYERS, FLORIDA 33912 CITY STATE ZIP  
(239) 275-8875 PHONE NUMBER 09-04-2006 DATE

SEND ORIGINAL TO:  
 Department of Environmental Protection  
 Bureau of Surveying and Mapping  
 3900 Commonwealth Boulevard  
 Mail Station 105  
 Tallahassee, Florida 32399

Processed: 12-1-06 MB D.E.P. USE ONLY  
 B.L.M. - I.D. 500340  
 QUAD - I.D. 2215 Ft. Myers

EMBOSSSED SEAL OVER SIGNATURE