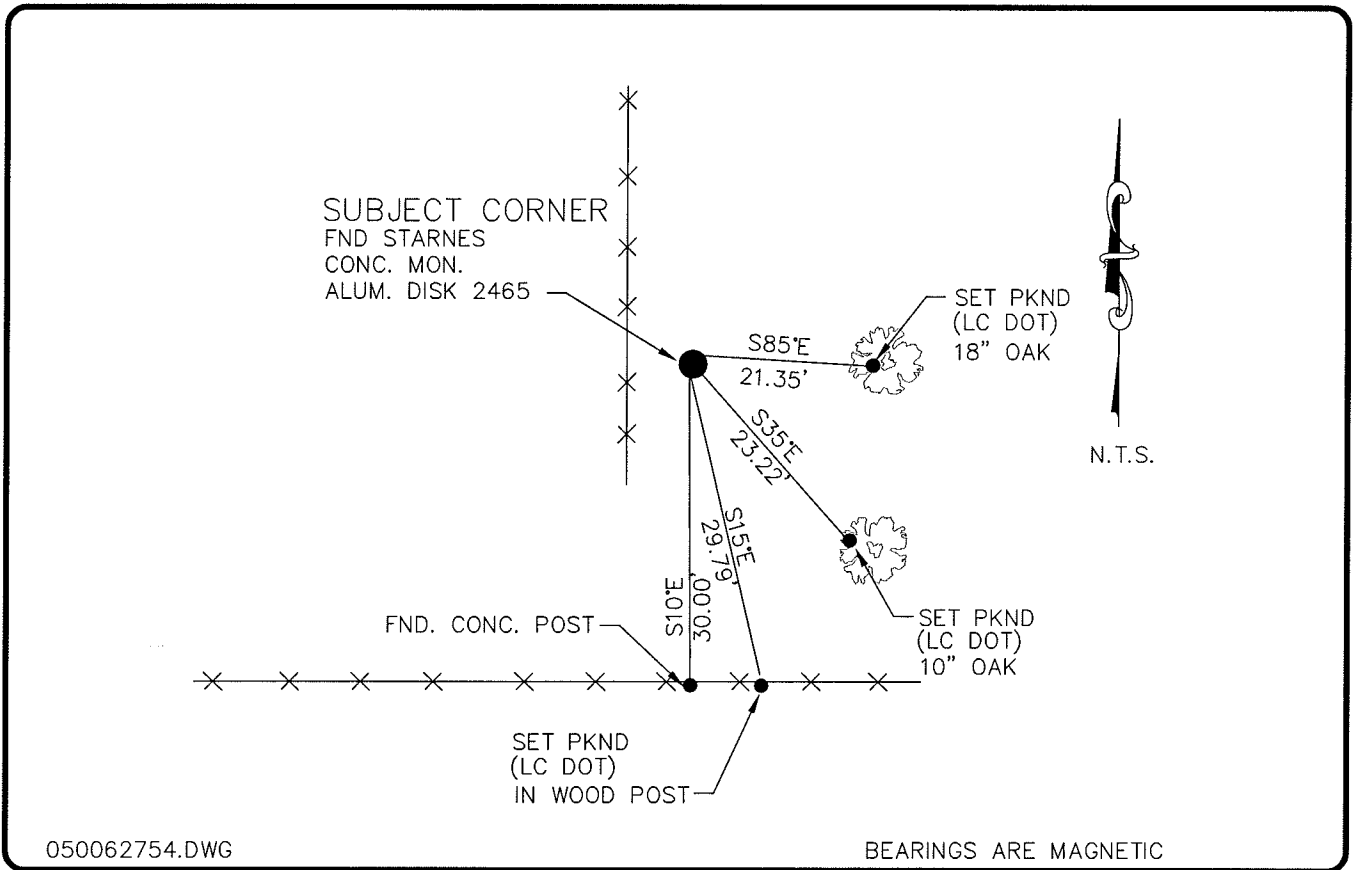


LAND CORNER RECORD

**PUBLIC WORKS  
LEE COUNTY, FLORIDA**

Address - 1500 Monroe St., Ft. Myers, Fla. 33901

Phone : (239) 479-8900



050062754.DWG

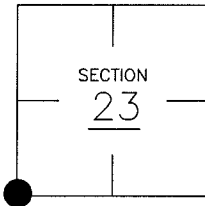
BEARINGS ARE MAGNETIC

**COMMENTS:**

STARNES FOUND A 1" STEEL PIPE IN 1981  
ACCEPTED AS SW CORNER OF SECTION 23,  
C.C.R. DOC. INDICATES A STARNES AND ASSCS.  
MON. #2465 WAS SET PRIOR TO 1989 AND  
BEN HOMOLA ACCEPTED MON. AS CORNER IN 1983.

CORNER DESCRIPTION

SW Corner  
Section 23  
Township 43  
Range 25



HORIZONTAL POSITION INFORMATION

Florida West Zone, NAD 1983(1990 Adjustment)  
Northing(ft) 864287.45 Easting(ft) 723527.70  
Latitude 26°42'40.71587" Longitude 81°47'37.15669"  
Scale Factor 0.99994637

EXISTING CERTIFIED CORNER RECORDS

Document No.	Date
<u>13839</u>	<u>12-21-81</u>
<u>33103</u>	<u>6-18-89</u>
<u>35219</u>	<u>3-20-90</u>

The above documents are based on FDEP Bureau of Surveying and Mapping Record Information.

I hereby certify the monument and accessories shown above were field located on 7-7-04.

**Arthur W. Parsons, County Surveyor**  
Professional Surveyor and Mapper  
Florida Certificate No. 2987  
Date Signed 12-19-05

Lee County Department of Transportation  
1500 Monroe Street  
Fort Myers, Florida 33901  
Phone: (239) 479-8900

POINT NO. 94

BLM REFERENCE NO. T43SR25E500300