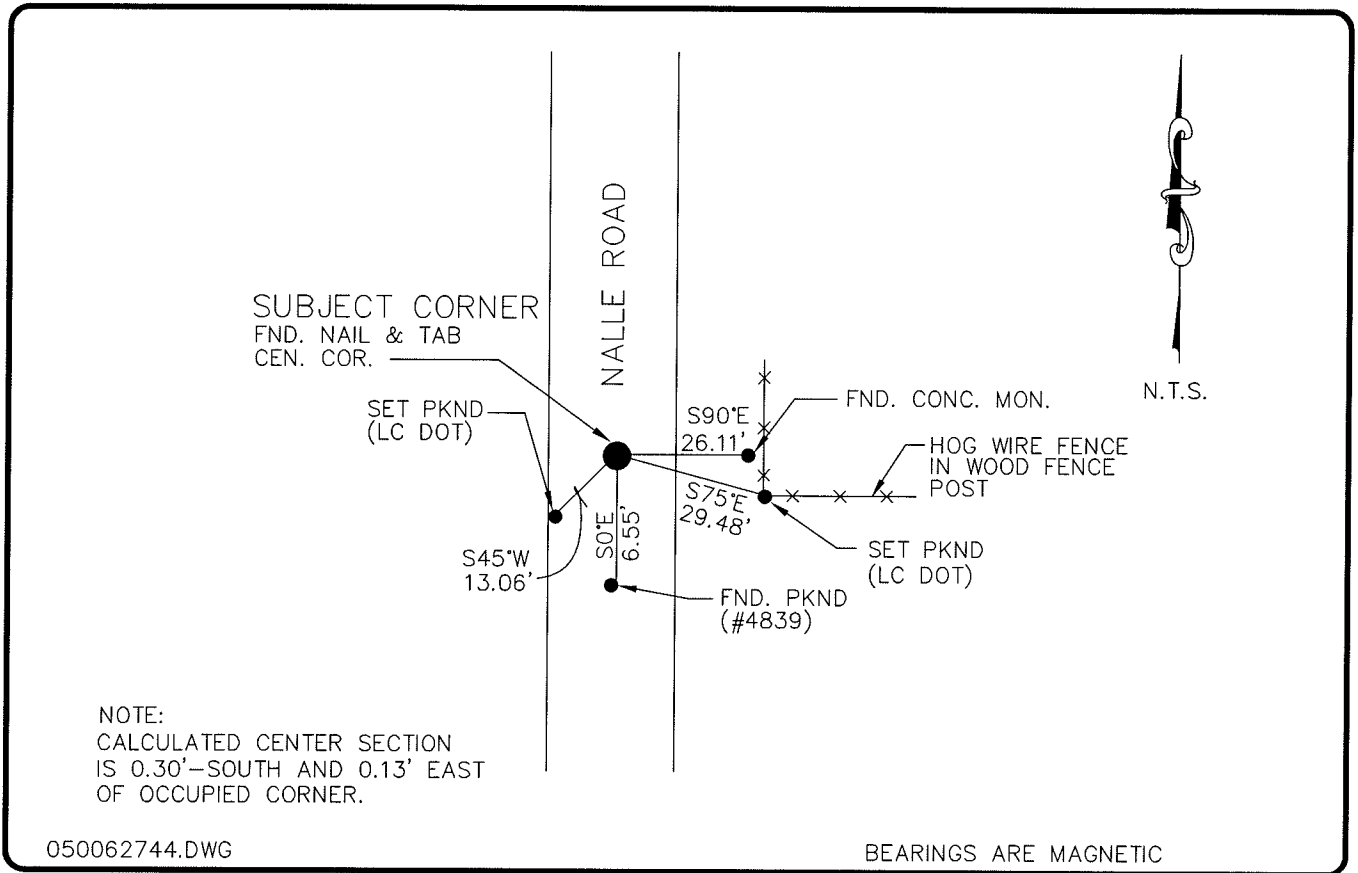


LAND CORNER RECORD

**PUBLIC WORKS
LEE COUNTY, FLORIDA**

Address - 1500 Monroe St., Ft. Myers, Fla. 33901

Phone : (239) 479-8900

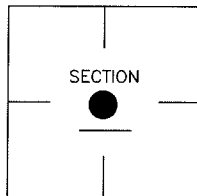


COMMENTS:

FOUND NAIL AND TAB AT CENTER SECTION.
AGREES WITH STARNES SECTION DRAWINGS.
BEING USED AS LOCALLY ACCEPTED CORNER.

CORNER DESCRIPTION

Center Sec. Corner
Section 3
Township 43
Range 25



HORIZONTAL POSITION INFORMATION

Florida West Zone, NAD 1983(1990 Adjustment)
 Northing(ft) 882950.40 Easting(ft) 720922.39
 Latitude 26°45'45.59193" Longitude 81°48'05.56535"
 Scale Factor 0.99994598

EXISTING CERTIFIED CORNER RECORDS

Document No.	Date
NONE FOUND	

The above documents are based on FDEP Bureau of Surveying and Mapping Record Information.

I hereby certify the monument and accessories shown above were field located on 10-7-04.

(Signature)

Arthur W. Parsons, County Surveyor
 Professional Surveyor and Mapper
 Florida Certificate No. 2987
 Date Signed 12-19-05

Lee County Department of Transportation
 1500 Monroe Street
 Fort Myers, Florida 33901
 Phone: (239) 479-8900

POINT NO. 64

BLM REFERENCE NO. T43SR25E440640