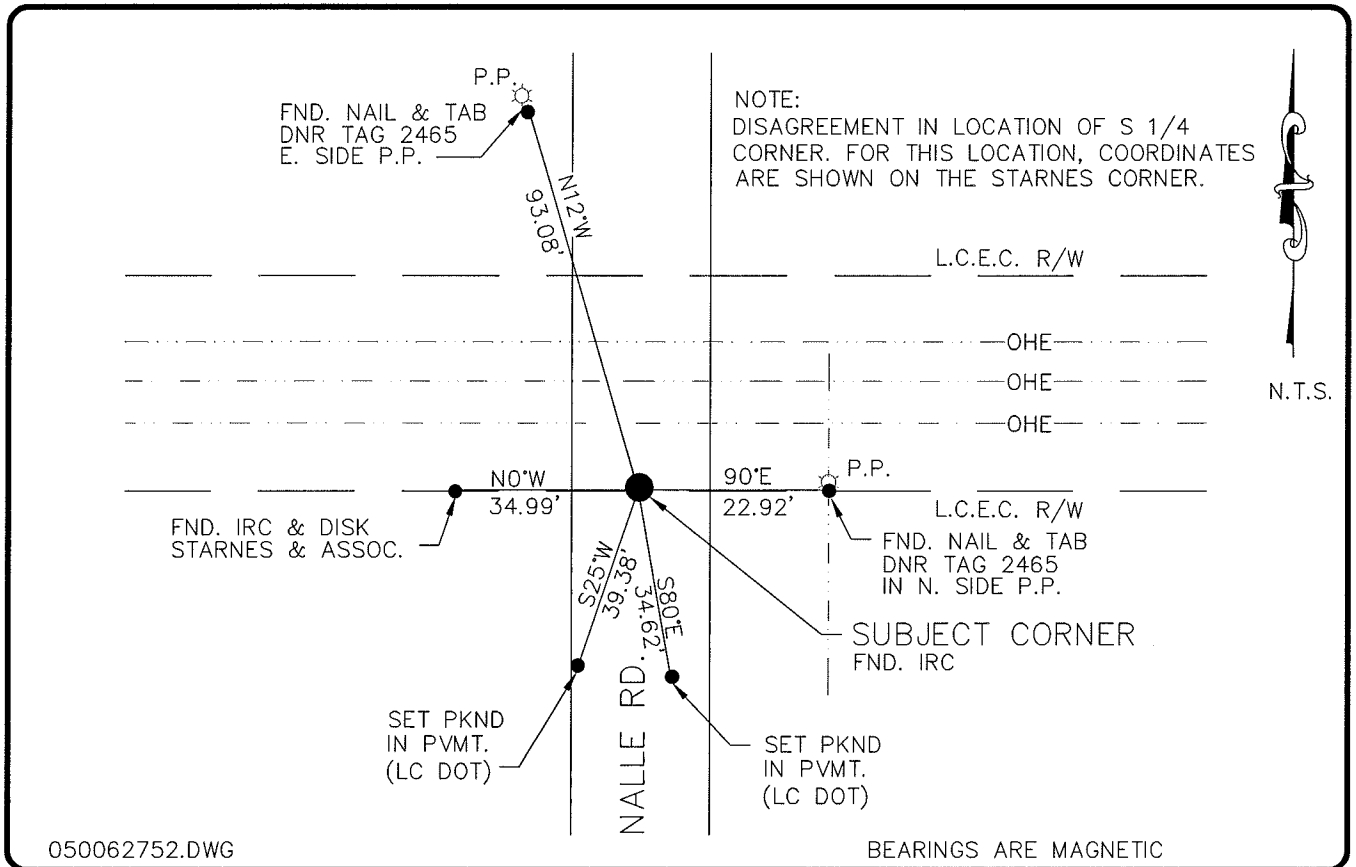


LAND CORNER RECORD

**PUBLIC WORKS
LEE COUNTY, FLORIDA**

Address - 1500 Monroe St., Ft. Myers, Fla. 33901

Phone : (239) 479-8900



050062752.DWG

BEARINGS ARE MAGNETIC

COMMENTS:

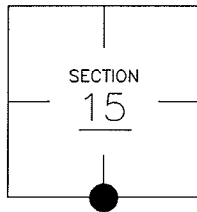
LES BUISON (JEI) CCR DOC. #8844 FOUND A NAIL & TAB IN PVMT. NALLE RD. AND REPLACED WITH A (JEI) BRONZE DISK STAMPED 1/4 COR SEC-15-22, STARNES IN 1983 (CCR DOC. #16614) DISAGREE WITH JEI LOCATION & FINDS A RAILROAD SPIKE AND AN IRON PIN 0.8' BELOW ROAD AND SHOWS THE JEI BRONZE DISK N23°05'10"E (MAGNETIC) AT A DISTANCE OF 6.22'

HORIZONTAL POSITION INFORMATION

Florida West Zone, NAD 1983(1990 Adjustment)
 Northing(ft) 869625.04 Easting(ft) 720895.60
 Latitude 26°43'33.62020" Longitude 81°48'06.08989"
 Scale Factor 0.99994598

CORNER DESCRIPTION

S 1/4 Corner
 Section 15
 Township 43
 Range 25



EXISTING CERTIFIED CORNER RECORDS

Document No.	Date
<u>8844</u>	<u>2-16-80</u>
<u>16614</u>	<u>11-15-83</u>

The above documents are based on FDEP Bureau of Surveying and Mapping Record Information.

I hereby certify the monument and accessories shown above were field located on 10-11-04.

Arthur W. Parsons
Arthur W. Parsons, County Surveyor
 Professional Surveyor and Mapper
 Florida Certificate No. 2987
 Date Signed 12-19-05

Lee County Department of Transportation
 1500 Monroe Street
 Fort Myers, Florida 33901
 Phone: (239) 479-8900

POINT NO. 67

BLM REFERENCE NO. T43SR25E440400