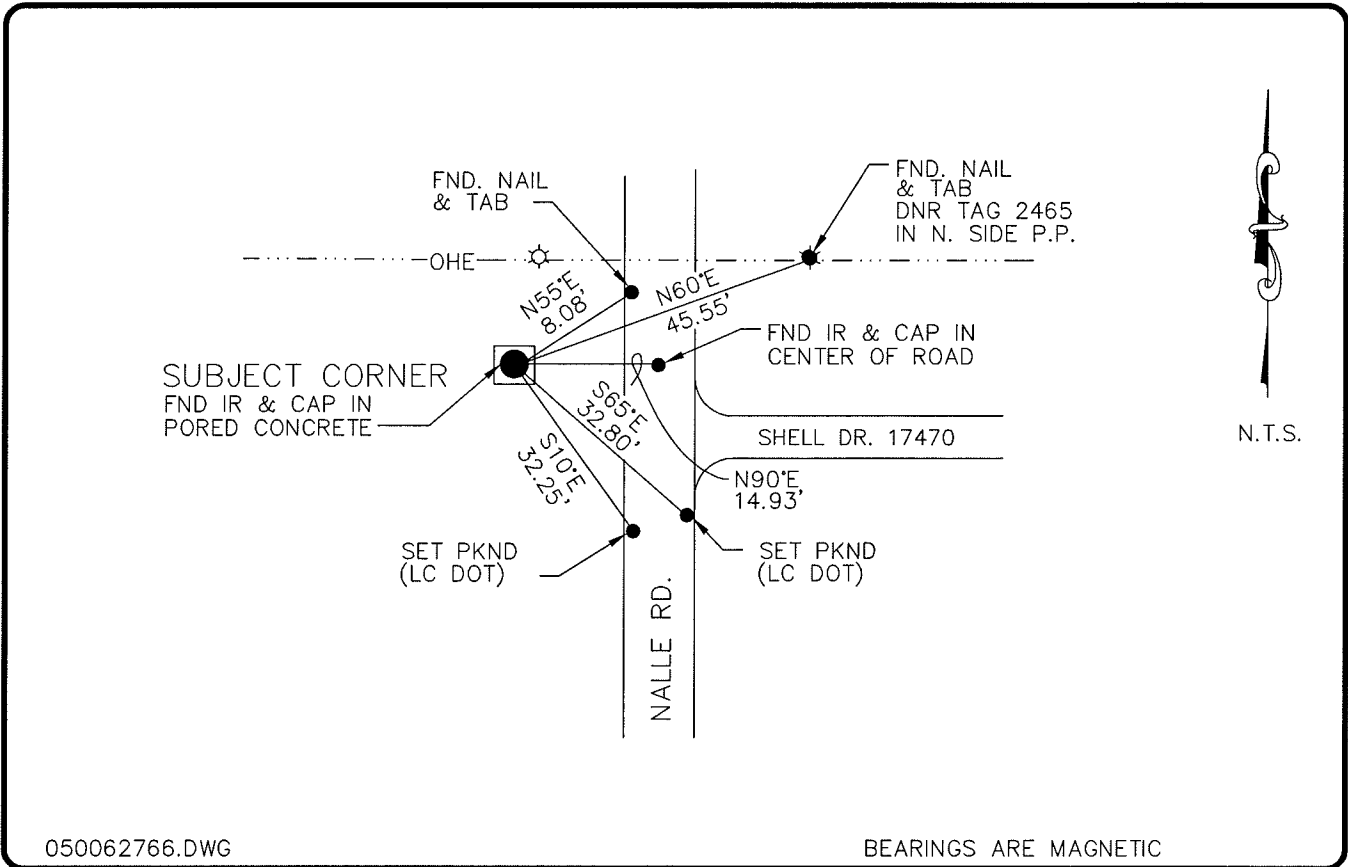


LAND CORNER RECORD

**PUBLIC WORKS
LEE COUNTY, FLORIDA**

Address - 1500 Monroe St., Ft. Myers, Fla. 33901

Phone : (239) 479-8900



050062766.DWG

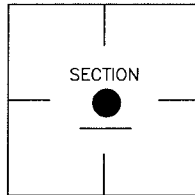
BEARINGS ARE MAGNETIC

COMMENTS:

CORNER DESCRIPTION

FOUND AN IRON ROD AND CAP STAMPED DOVE IN POURED CONCRETE AT TOE OF SLOPE 15' WEST OF CENTER OF PAVEMENT.

CEN. SEC Corner
Section 22
Township 43
Range 25



HORIZONTAL POSITION INFORMATION

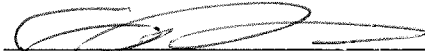
Florida West Zone, NAD 1983(1990 Adjustment)
 Northing(ft) 866958.31 Easting(ft) 720891.27
 Latitude 26°43'07.209446" Longitude 81°48'06.183385"
 Scale Factor 0.99994597

EXISTING CERTIFIED CORNER RECORDS

Document No.	Date
<u>16613</u>	<u>3-24-83</u>

The above documents are based on FDEP Bureau of Surveying and Mapping Record Information.

I hereby certify the monument and accessories shown above were field located on 10-11-04.


Arthur W. Parsons, County Surveyor
 Professional Surveyor and Mapper
 Florida Certificate No. 2987
 Date Signed 1-17-06

Lee County Department of Transportation
 1500 Monroe Street
 Fort Myers, Florida 33901
 Phone: (239) 479-8900

POINT NO. 55

BLM REFERENCE NO. T43SR25E440340