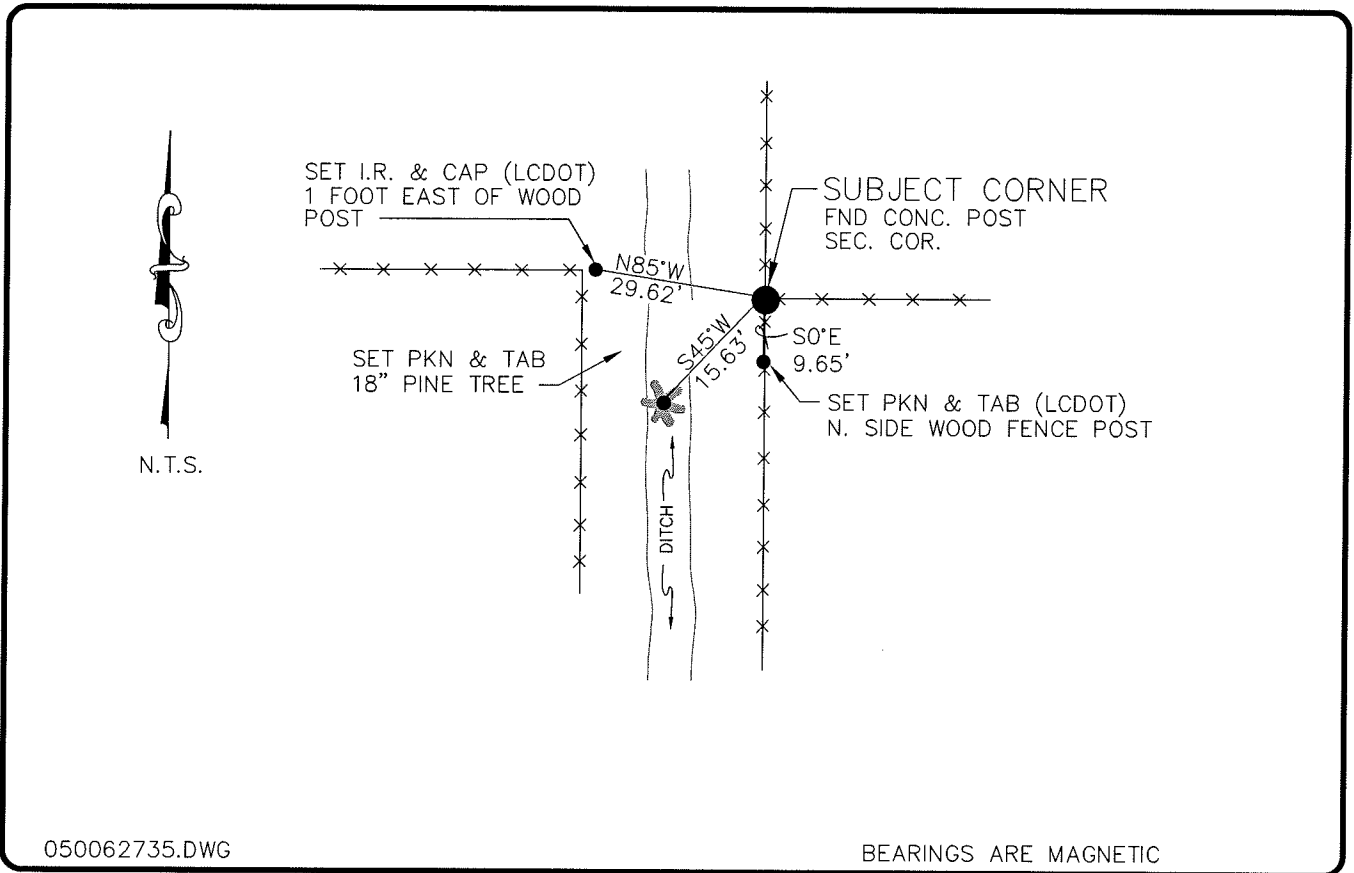


**LAND CORNER RECORD**

**PUBLIC WORKS  
LEE COUNTY, FLORIDA**

Address - 1500 Monroe St., Ft. Myers, Fla. 33901

Phone : (239) 479-8900

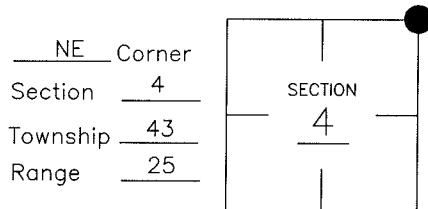


050062735.DWG

BEARINGS ARE MAGNETIC

**COMMENTS:**

**CORNER DESCRIPTION**



FOUND 4"x4" CONC. POST AT SECTION CORNER.  
CONFORMS WITH STARNES SECTION BREAKDOWN.

**HORIZONTAL POSITION INFORMATION**

Florida West Zone, NAD 1983(1990 Adjustment)  
 Northing(ft) 885515.25      Easting(ft) 718301.37  
 Latitude 26°46'11.033530"      Longitude 81°48'34.439921"  
 Scale Factor 0.9999456028

**EXISTING CERTIFIED CORNER RECORDS**

Document No.	Date
NONE FOUND	

The above documents are based on FDEP Bureau of Surveying and Mapping Record Information.

I hereby certify the monument and accessories shown above were field located on 12-20-04.

**Arthur W. Parsons, County Surveyor**  
 Professional Surveyor and Mapper  
 Florida Certificate No. 2987  
 Date Signed 12-19-05  
 Lee County Department of Transportation  
 1500 Monroe Street  
 Fort Myers, Florida 33901  
 Phone: (239) 479-8900

POINT NO. 159

BLM REFERENCE NO. T43SR25E400700