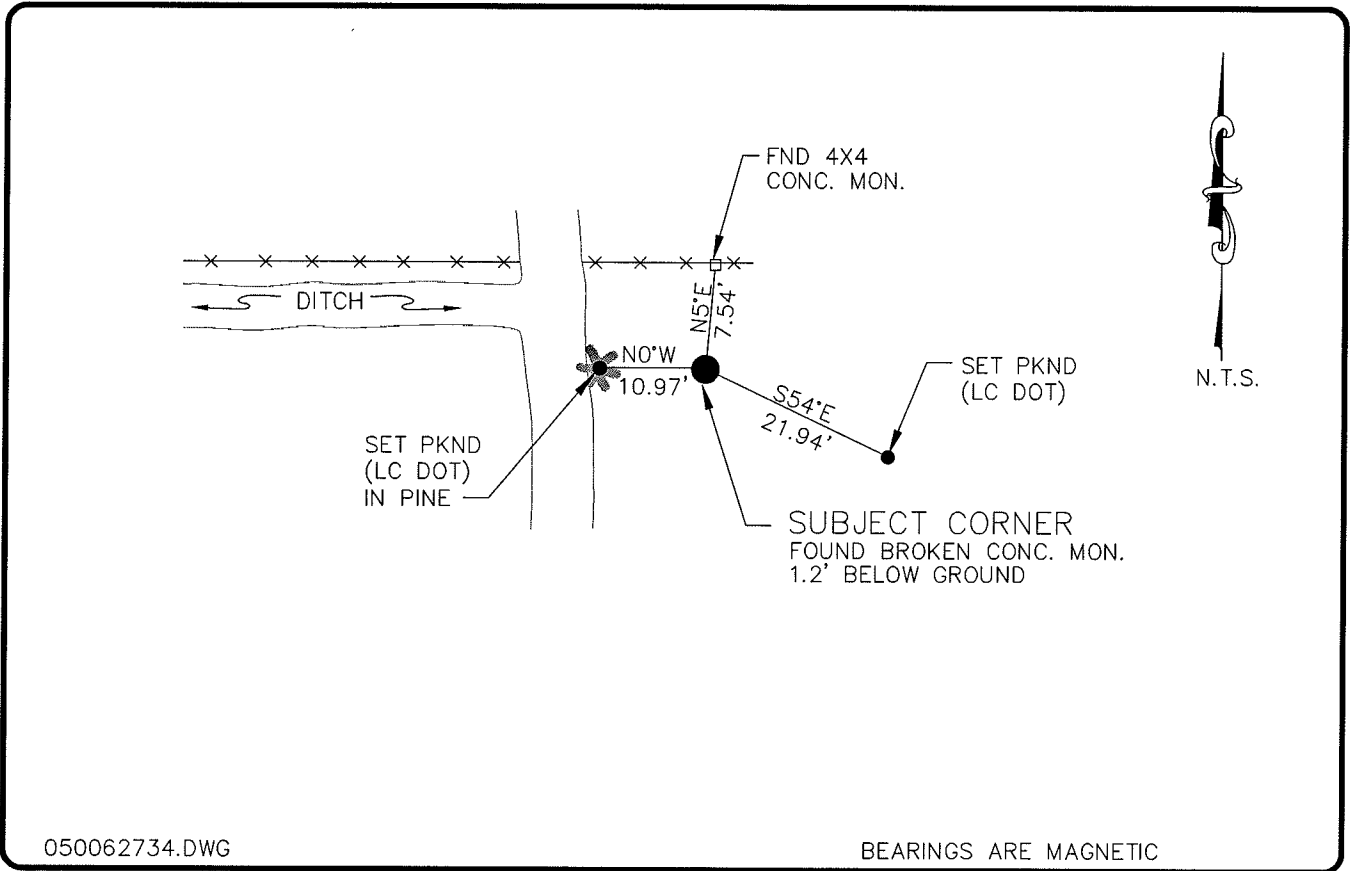


**LAND CORNER RECORD**

**PUBLIC WORKS  
LEE COUNTY, FLORIDA**

Address - 1500 Monroe St., Ft. Myers, Fla. 33901

Phone : (239) 479-8900



050062734.DWG

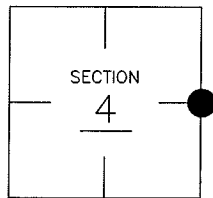
BEARINGS ARE MAGNETIC

**COMMENTS:**

FOUND BROKEN CONC. MONUMENT 1.2' BELOW GROUND SURFACE THAT CONFORMS TO STARNES SECTION MAPS.

**CORNER DESCRIPTION**

E 1/4 Corner  
Section 4  
Township 43  
Range 25



**HORIZONTAL POSITION INFORMATION**

Florida West Zone, NAD 1983(1990 Adjustment)  
 Northing(ft) 882972.63      Easting(ft) 718222.29  
 Latitude 26°45'45.85286"      Longitude 81°48'35.35461"  
 Scale Factor 0.999944559

**EXISTING CERTIFIED CORNER RECORDS**

Document No.	Date
NONE FOUND	

The above documents are based on FDEP Bureau of Surveying and Mapping Record Information.

I hereby certify the monument and accessories shown above were field located on 1-10-05.

*(Signature)*  
**Arthur W. Parsons, County Surveyor**  
 Professional Surveyor and Mapper  
 Florida Certificate No. 2987  
 Date Signed 12-19-05

Lee County Department of Transportation  
 1500 Monroe Street  
 Fort Myers, Florida 33901  
 Phone: (239) 479-8900

POINT NO. 174

BLM REFERENCE NO. T43SR25E400640