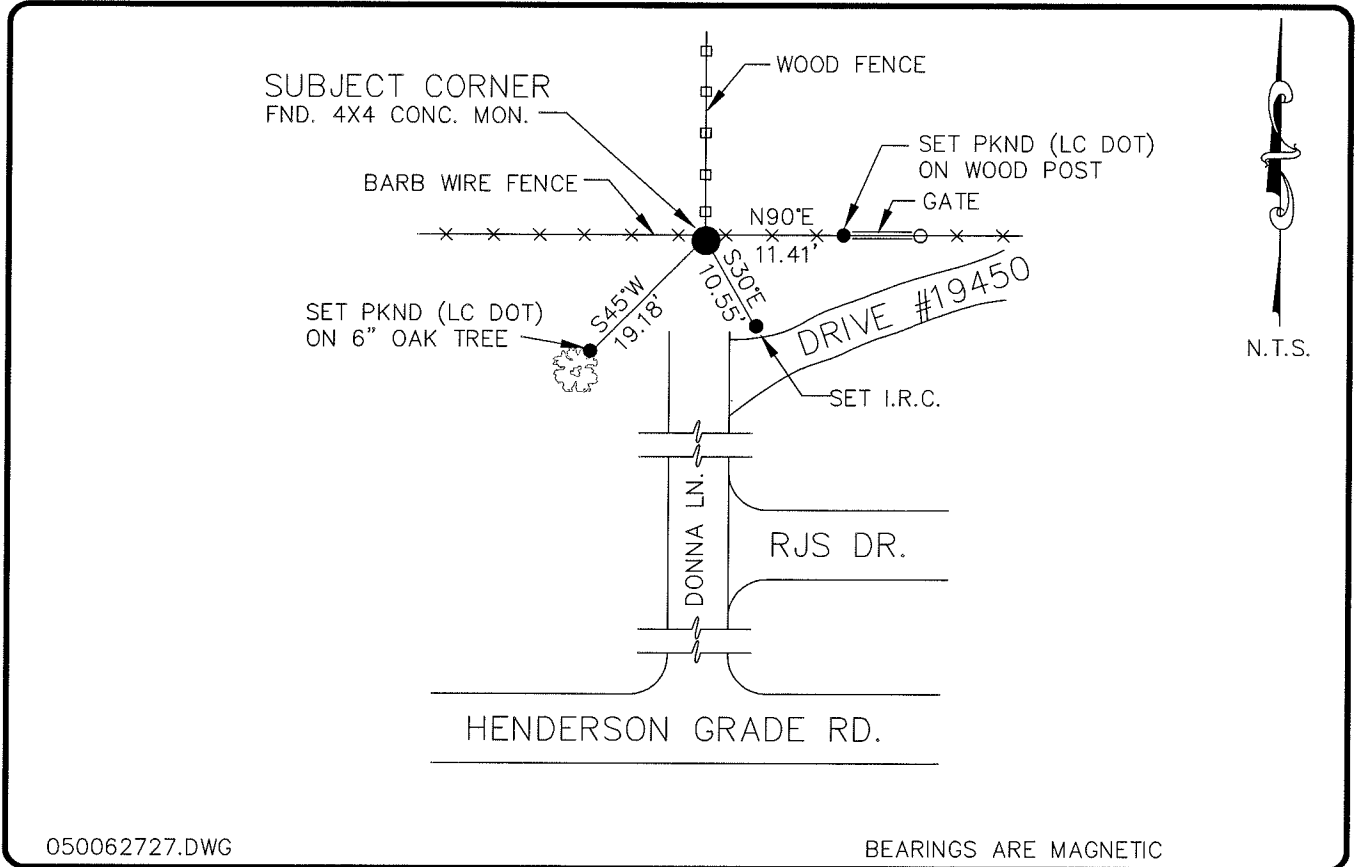


**LAND CORNER RECORD**

**PUBLIC WORKS  
LEE COUNTY, FLORIDA**

Address - 1500 Monroe St., Ft. Myers, Fla. 33901

Phone : (239) 479-8900



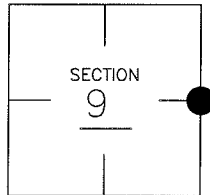
050062727.DWG

BEARINGS ARE MAGNETIC

**COMMENTS:**

**CORNER DESCRIPTION**

E 1/4 Corner  
Section 9  
Township 43  
Range 25



FOUND 4"x4" CONC. MONUMENT AT LOCATION NOTED ON STARNES C.C.R. RECORD DOCUMENT. RECORDED IN DOCUMENT # 13824 ORIGINAL NOTES BY CANOVA (1860-1961)

**HORIZONTAL POSITION INFORMATION**

Florida West Zone, NAD 1983(1990 Adjustment)  
Northing(ft) 877652.53 Easting(ft) 718203.09  
Latitude 26°44'53.16383" Longitude 81°48'35.65373"  
Scale Factor 0.99994558

**EXISTING CERTIFIED CORNER RECORDS**

Document No.	Date
<u>13822</u>	<u>11-06-81</u>
<u>14738</u>	<u>11-03-81</u>

The above documents are based on FDEP Bureau of Surveying and Mapping Record Information.

I hereby certify the monument and accessories shown above were field located on 1-05-05.

**Arthur W. Parsons, County Surveyor**  
Professional Surveyor and Mapper  
Florida Certificate No. 2987  
Date Signed 12-19-05

Lee County Department of Transportation  
1500 Monroe Street  
Fort Myers, Florida 33901  
Phone: (239) 479-8900

POINT NO. 183

BLM REFERENCE NO. T43SR25E 400 540