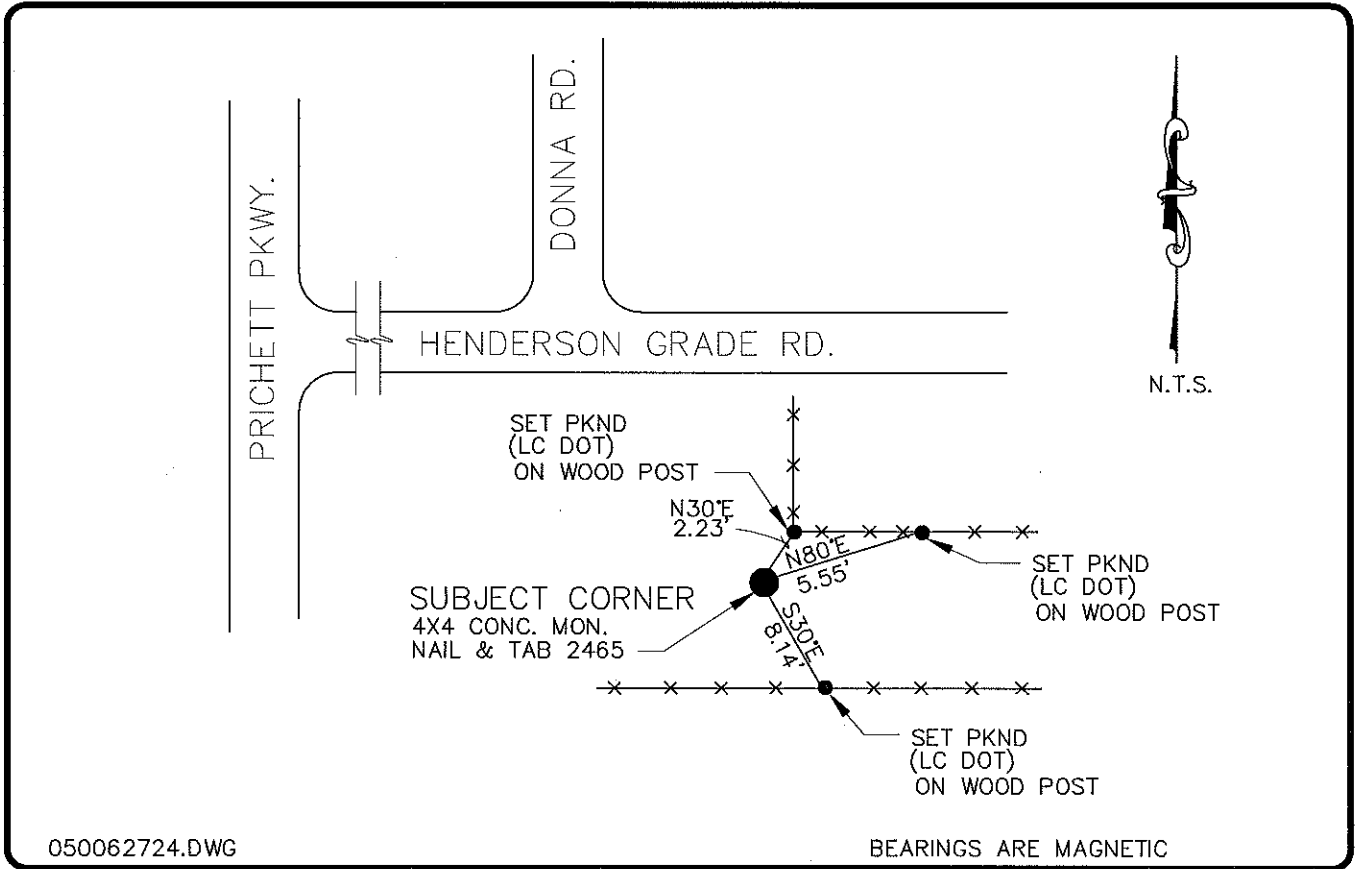


LAND CORNER RECORD

PUBLIC WORKS
LEE COUNTY, FLORIDA

Address - 1500 Monroe St., Ft. Myers, Fla. 33901

Phone : (239) 479-8900



050062724.DWG

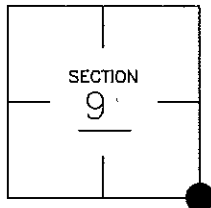
BEARINGS ARE MAGNETIC

COMMENTS:

FOUND 4"x4" CONC. MONUMENT WITH NAIL & TAB #2465, SEE DOCUMENT #13821 FOR ADDITIONAL INFORMATION ON HOW CORNER WAS ESTABLISHED

CORNER DESCRIPTION

SE Corner
Section 9
Township 43
Range 25



HORIZONTAL POSITION INFORMATION

Florida West Zone, NAD 1983(1990 Adjustment)

Northing(ft) 874952.77 Easting(ft) 718210.65

Latitude 26°44'26.42597" Longitude 81°48'36.61484"

Scale Factor 0.99994558

EXISTING CERTIFIED CORNER RECORDS

Document No.	Date
<u>13821</u>	<u>11-07-81</u>
_____	_____
_____	_____
_____	_____

The above documents are based on FDEP Bureau of Surveying and Mapping Record Information.

I hereby certify the monument and accessories shown above were field located on 11-11-05.

Arthur W. Parsons, County Surveyor
Professional Surveyor and Mapper
Florida Certificate No. 2987
Date Signed _____

Lee County Department of Transportation
1500 Monroe Street
Fort Myers, Florida 33901
Phone: (239) 479-8900

POINT NO. 182

BLM REFERENCE NO. T43SR25E400500