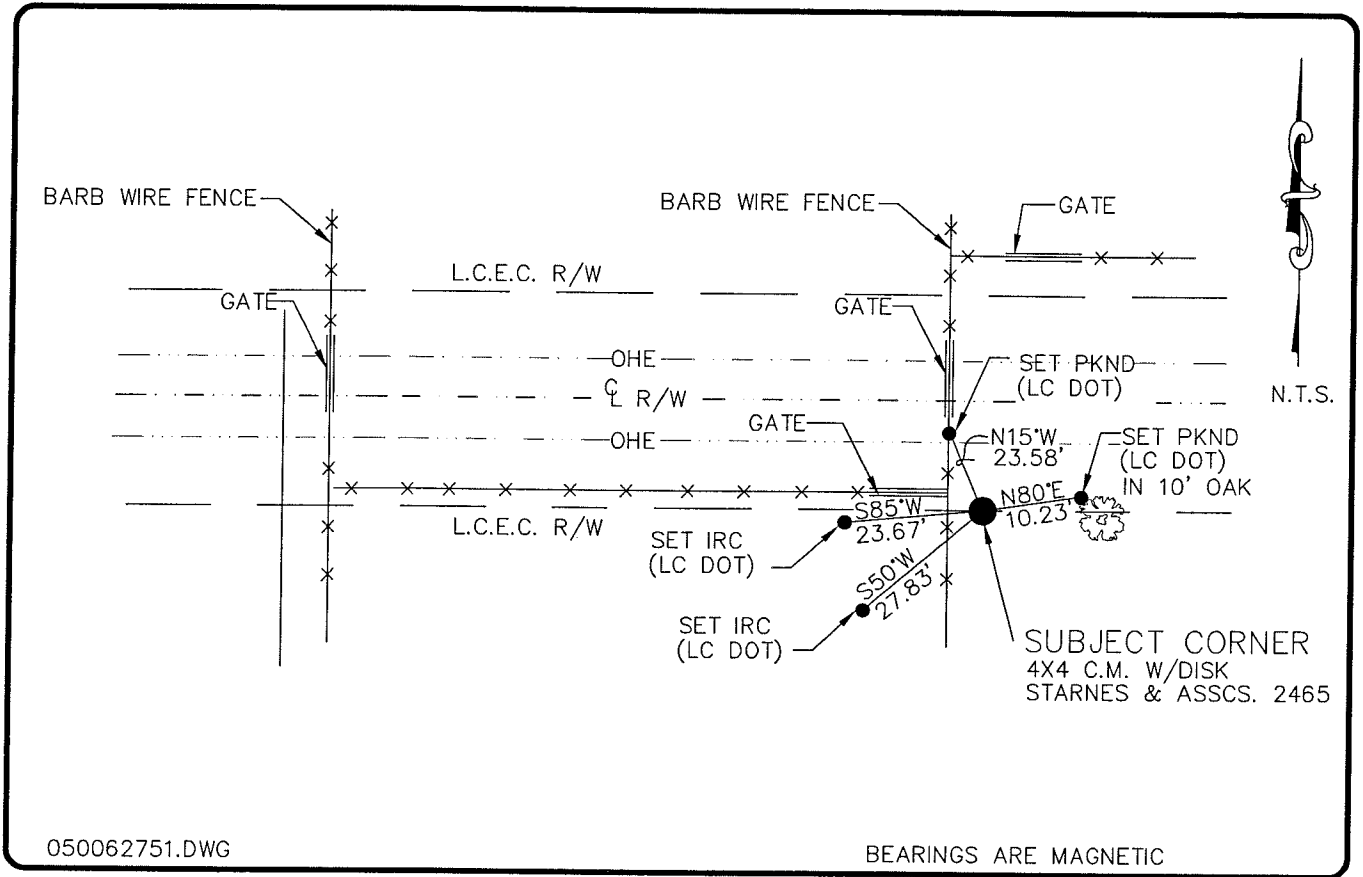


LAND CORNER RECORD

**PUBLIC WORKS
LEE COUNTY, FLORIDA**

Address - 1500 Monroe St., Ft. Myers, Fla. 33901

Phone : (239) 479-8900



050062751.DWG

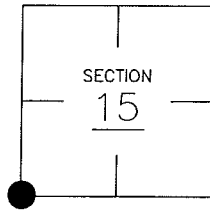
BEARINGS ARE MAGNETIC

COMMENTS:

LES BULSON IN (1981) DOCUMENT NO. 8843 FOUND A NUT & BOLT 0.9' SOUTH OF FENCE CORNER AND CALLED A LOCALLY ACCEPTED CORNER. CORNER IS NOW A 4"X4" CONC. MON. WITH A STARNES AND ASSOCIATES DISK. LEE (FDOT) IN 1999 RECOVERED 4"X4" C.M.

CORNER DESCRIPTION

SW Corner
Section 15
Township 43
Range 25



HORIZONTAL POSITION INFORMATION

Florida West Zone, NAD 1983(1990 Adjustment)
 Northing(ft) 869642.54 Easting(ft) 718212.50
 Latitude 26°43'33.83505" Longitude 81°48'35.68196"
 Scale Factor 0.99994559

EXISTING CERTIFIED CORNER RECORDS

Document No.	Date
<u>8843</u>	<u>(UNDATED) FILED 1-23-81</u>
<u>68696</u>	<u>6-23-99</u>

The above documents are based on FDEP Bureau of Surveying and Mapping Record Information.

I hereby certify the monument and accessories shown above were field located on 7-06-04.

(Signature)
Arthur W. Parsons, County Surveyor
 Professional Surveyor and Mapper
 Florida Certificate No. 2987
 Date Signed 12-19-05

Lee County Department of Transportation:
 1500 Monroe Street
 Fort Myers, Florida 33901
 Phone: (239) 479-8900

POINT NO. 48

BLM REFERENCE NO. T43SR25E400400