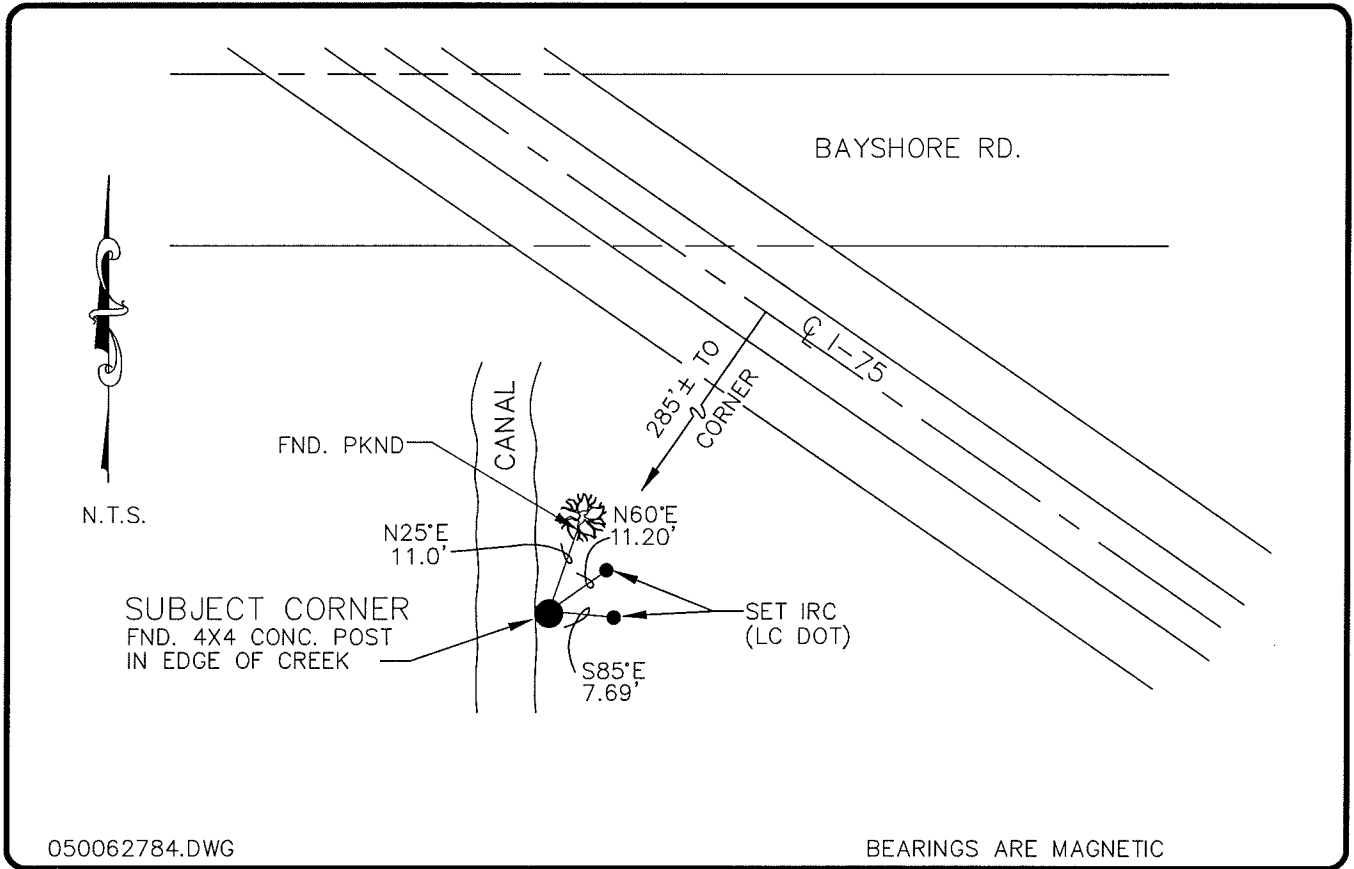


**PUBLIC WORKS
LEE COUNTY, FLORIDA**

Address - 1500 Monroe St., Ft. Myers, Fla. 33901

Phone : (239) 479-8900



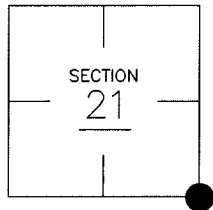
050062784.DWG

BEARINGS ARE MAGNETIC

COMMENTS:

CORNER DESCRIPTION

SE Corner
Section 21
Township 43
Range 25



CONC. POST FOUND IN EDGE OF CREEK MATCHES AVAILABLE RECORDS AND CONFORMS TO EXISTING C.C.R. RECORDS.

HORIZONTAL POSITION INFORMATION

Florida West Zone, NAD 1983(1990 Adjustment)

Northing(ft) 864286.12 Easting(ft) 718243.04

Latitude 26°42'40.785327" Longitude 81°48'35.432851"

Scale Factor 0.99994559

EXISTING CERTIFIED CORNER RECORDS

Document No.	Date
<u>19094</u>	<u>01-5-84</u>
<u>23076</u>	<u>5-12-86</u>
<u>33102</u>	<u>6-18-89</u>
<u>35228</u>	<u>4-9-90</u>
<u>68700</u>	<u>6-16-99</u>

The above documents are based on FDEP Bureau of Surveying and Mapping Record Information.

I hereby certify the monument and accessories shown above were field located on 3-14-05.

Arthur W. Parsons, County Surveyor
Professional Surveyor and Mapper
Florida Certificate No. 2987
Date Signed 12-19-05

Lee County Department of Transportation
1500 Monroe Street
Fort Myers, Florida 33901
Phone: (239) 479-8900

POINT NO. 203

BLM REFERENCE NO. T43SR25E400300