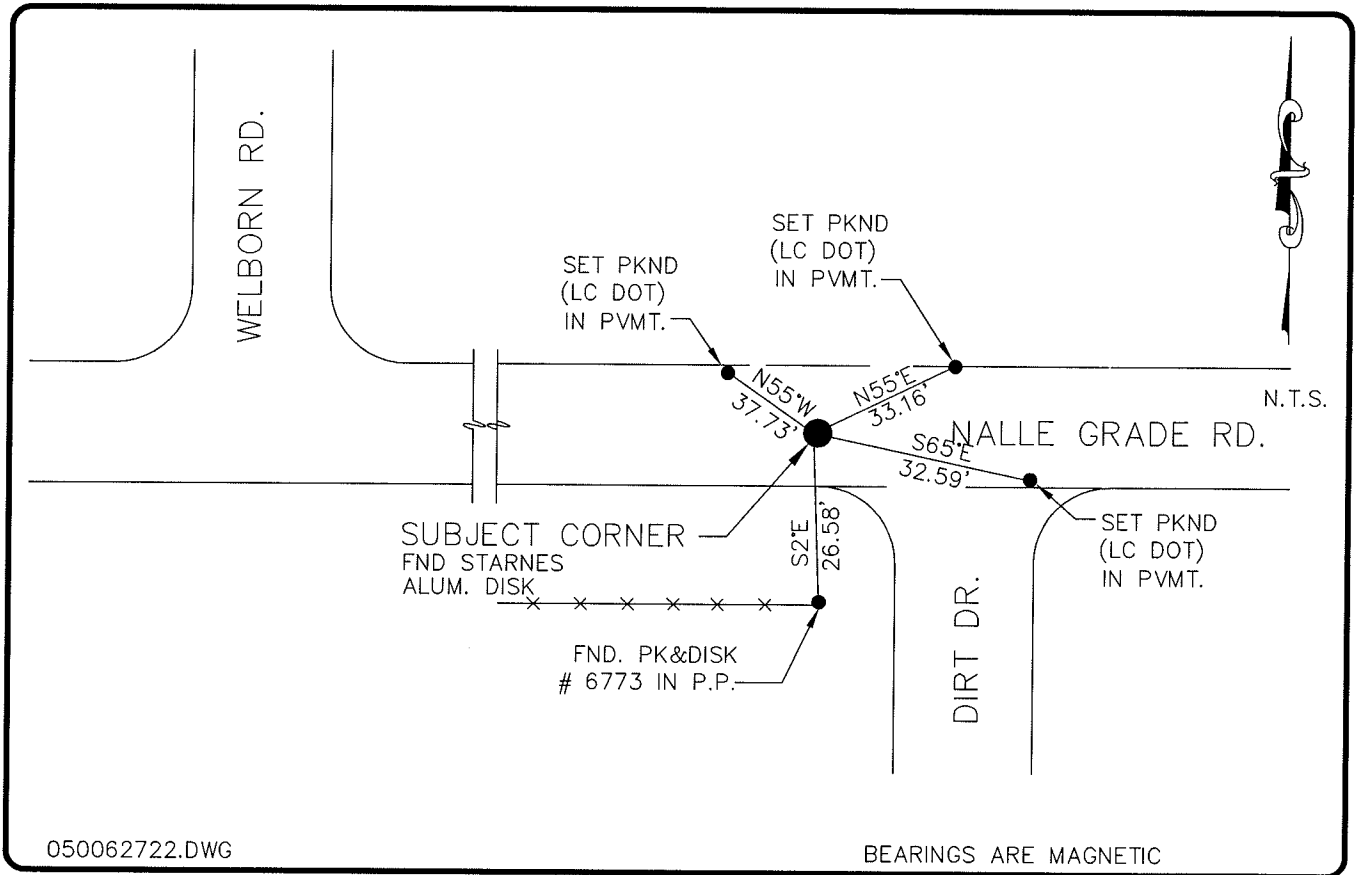


LAND CORNER RECORD

**PUBLIC WORKS
LEE COUNTY, FLORIDA**

Address - 1500 Monroe St., Ft. Myers, Fla. 33901

Phone : (239) 479-8900

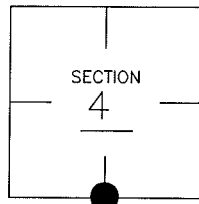


COMMENTS:

STARNES FOUND A RAILROAD SPIKE IN 1981.
(SECTION MAP INDICATES THAT STARNES
LOCATED A LITERWOOD POST IN 1965.)
1/4 CORNER IS NOW A STARNES ALUM.
DISK #2465.

CORNER DESCRIPTION

S 1/4 Corner
Section 4
Township 43
Range 25



HORIZONTAL POSITION INFORMATION

Florida West Zone, NAD 1983(1990 Adjustment)
Northing(ft) 880306.06 Easting(ft) 715553.49
Latitude 26°45'19.48250" Longitude 81°49'04.84128"
Scale Factor 0.99994521

EXISTING CERTIFIED CORNER RECORDS

Document No.	Date
<u>13816</u>	<u>12-21-81</u>

The above documents are based on FDEP Bureau of Surveying and Mapping Record Information.

I hereby certify the monument and accessories shown above were field located on 10-7-04.

Arthur W. Parsons, County Surveyor
Professional Surveyor and Mapper
Florida Certificate No. 2987
Date Signed 12-19-05

Lee County Department of Transportation
1500 Monroe Street
Fort Myers, Florida 33901
Phone: (239) 479-8900

POINT NO. 62

BLM REFERENCE NO. T43SR25E340600