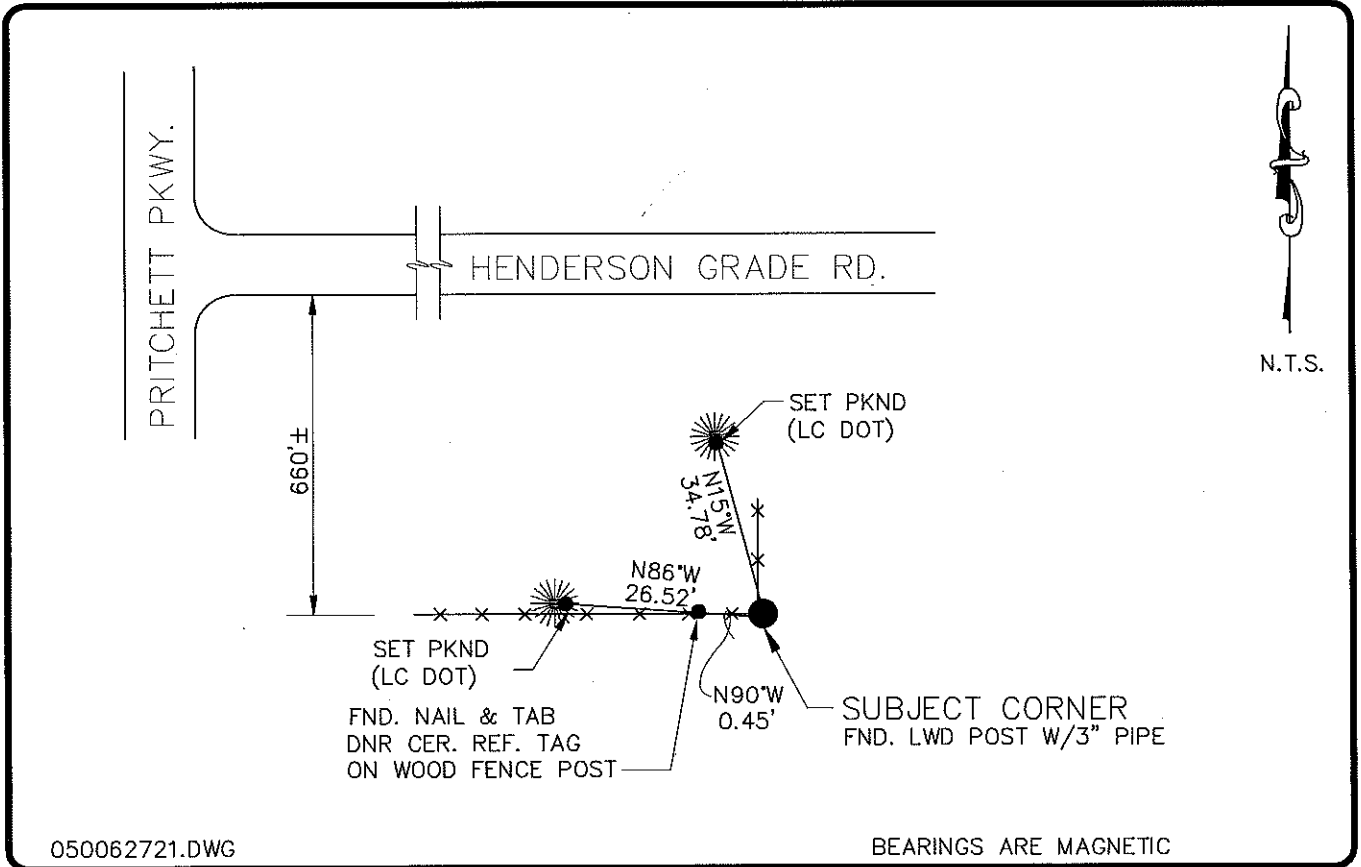


LAND CORNER RECORD

PUBLIC WORKS
LEE COUNTY, FLORIDA

Address - 1500 Monroe St., Ft. Myers, Fla. 33901

Phone : (239) 479-8900



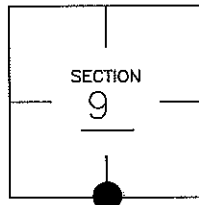
050062721.DWG

BEARINGS ARE MAGNETIC

COMMENTS:

CORNER DESCRIPTION

S 1/4 Corner
Section 9
Township 43
Range 25



DOCUMENT 13812 SHOWS A FOUND 4'X4" LITERWOOD POST "PROVEN BY STARNES IN 1981"

HORIZONTAL POSITION INFORMATION

Florida West Zone, NAD 1983(1990 Adjustment)

Northing(ft) 874976.61 Easting(ft) 715564.01

Latitude 26°44'26.70029" Longitude 81°40'04.80845"

Scale Factor 0.99994522

EXISTING CERTIFIED CORNER RECORDS

Document No.	Date
<u>13812</u>	<u>12-20-81</u>
_____	_____
_____	_____
_____	_____

The above documents are based on FDEP Bureau of Surveying and Mapping Record Information.

I hereby certify the monument and accessories shown above were field located on 1-11-05.

Arthur W. Parsons, County Surveyor
Professional Surveyor and Mapper
Florida Certificate No. 2987
Date Signed _____

Lee County Department of Transportation
1500 Monroe Street
Fort Myers, Florida 33901
Phone: (239) 479-8900

POINT NO. 179

BLM REFERENCE NO. T43SR25E400500 ³⁴⁰