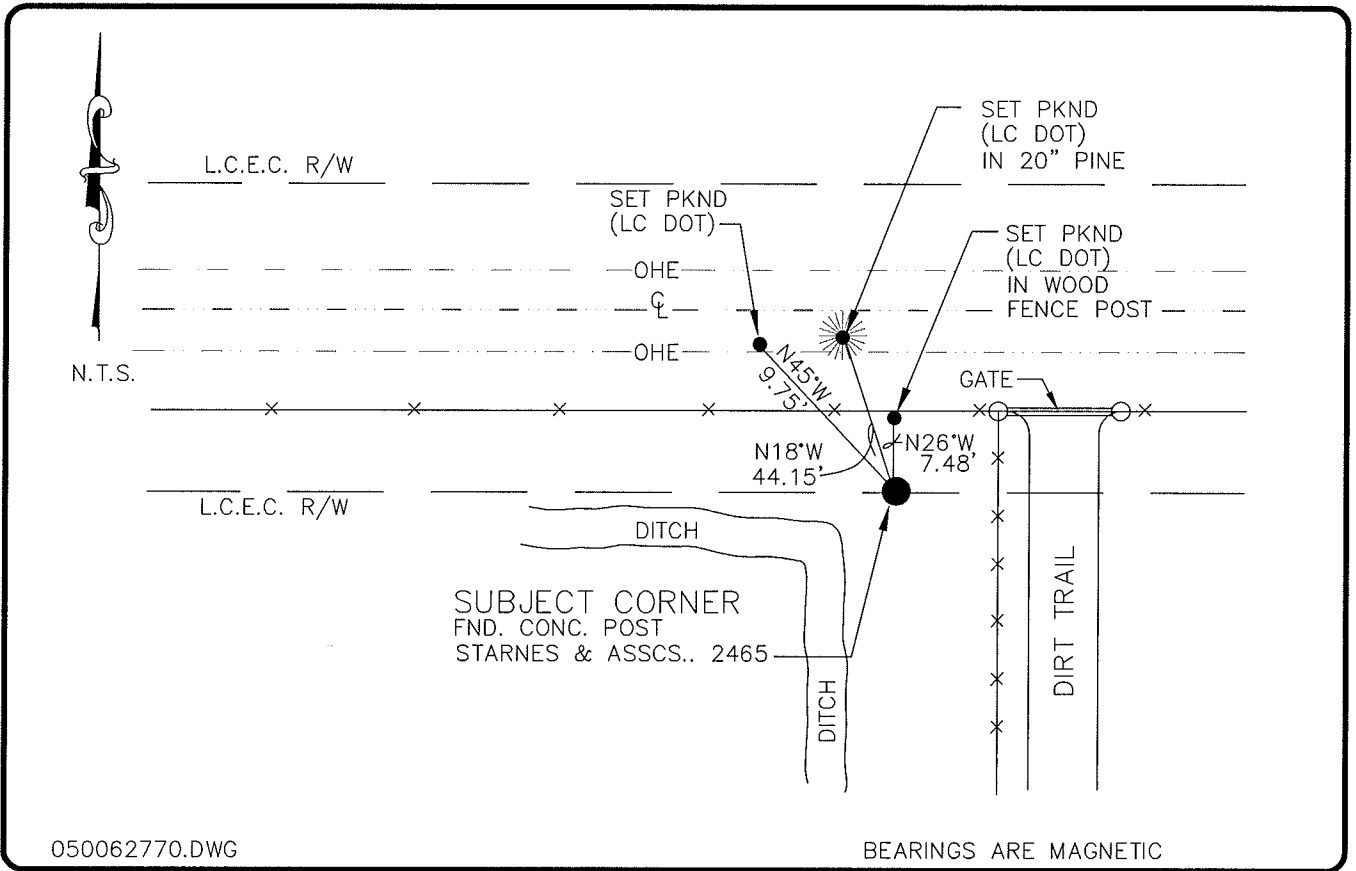


**LAND CORNER RECORD**

**PUBLIC WORKS  
LEE COUNTY, FLORIDA**

Address - 1500 Monroe St., Ft. Myers, Fla. 33901

Phone : (239) 479-8900



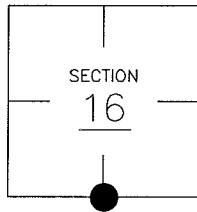
050062770.DWG

BEARINGS ARE MAGNETIC

**COMMENTS:**

**CORNER DESCRIPTION**

S 1/4 Corner  
Section 16  
Township 43  
Range 25



LES BULSON FOUND JEI CONC. POST AND CALLED "LOCALLY ACCEPTED CORNER" CCR DOC. NO.8842, STARNES FOUND POST IN 1982, CCR DOC. NO. 14731 AND RESET WITH A 4"X4" CONC. POST FDOT CALLED FOR A CONC. MON. IN 1999, CCR DOC. NO. 68695.

**HORIZONTAL POSITION INFORMATION**

Florida West Zone, NAD 1983(1990 Adjustment)  
 Northing(ft) 869647.78 Easting(ft) 715566.29  
 Latitude 26°43'33.924432" Longitude 81°49'04.866797"  
 Scale Factor 0.99994522

**EXISTING CERTIFIED CORNER RECORDS**

Document No.	Date
8842	11-15-80
14731	4-18-82
68695	6-23-99

The above documents are based on FDEP Bureau of Surveying and Mapping Record Information.

I hereby certify the monument and accessories shown above were field located on 11-16-04.

*Arthur W. Parsons*  
**Arthur W. Parsons, County Surveyor**  
 Professional Surveyor and Mapper  
 Florida Certificate No. 2987  
 Date Signed 12-19-09

Lee County Department of Transportation  
 1500 Monroe Street  
 Fort Myers, Florida 33901  
 Phone: (239) 479-8900

POINT NO. 141

BLM REFERENCE NO. T43SR25E340400