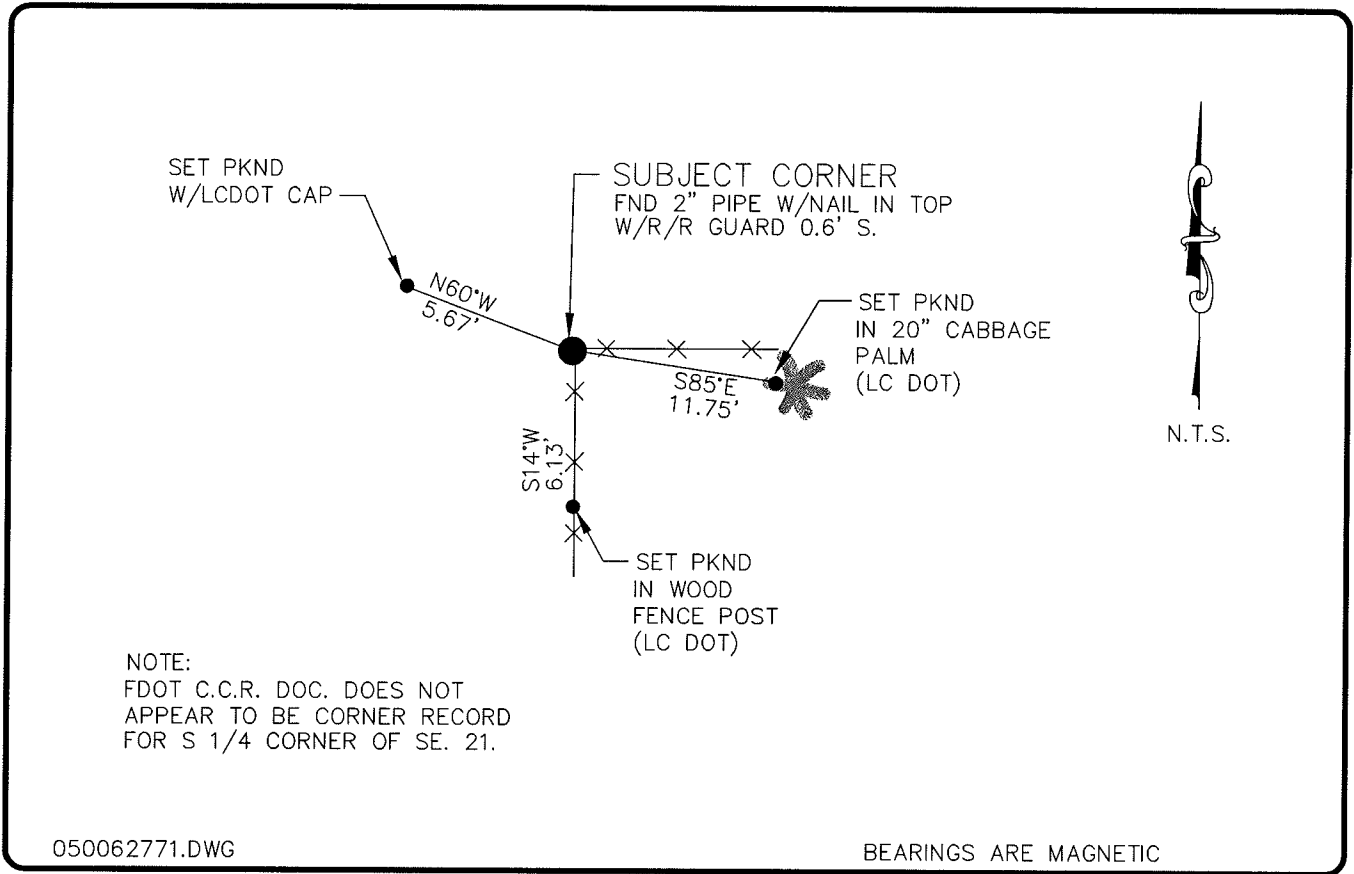


**LAND CORNER RECORD**

**PUBLIC WORKS  
LEE COUNTY, FLORIDA**

Address - 1500 Monroe St., Ft. Myers, Fla. 33901

Phone : (239) 479-8900



NOTE:  
FDOT C.C.R. DOC. DOES NOT  
APPEAR TO BE CORNER RECORD  
FOR S 1/4 CORNER OF SE. 21.

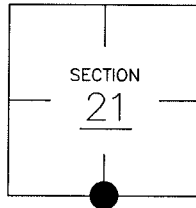
050062771.DWG

BEARINGS ARE MAGNETIC

**COMMENTS:**

**CORNER DESCRIPTION**

S 1/4 Corner  
Section 21  
Township 43  
Range 25



STARNES RECOVERED A 2" IRON PIPE AT THE SOUTH 1/4 CORNER OF SECTION 21 AND 17 HAS BEEN ACCEPTED AS A LOCALLY ACCEPTED 1/4 SECTION CORNER.

**HORIZONTAL POSITION INFORMATION**

Florida West Zone, NAD 1983(1990 Adjustment)

Northing(ft) 864302.35 Easting(ft) 715557.35

Latitude 26°42'40.984247" Longitude 81°49'05.050140"

Scale Factor 0.99994522

**EXISTING CERTIFIED CORNER RECORDS**

Document No.	Date
<u>19098</u>	<u>6-28-99</u>
<u>23079</u>	<u>1-5-84</u>
<u>35225</u>	<u>5-12-86</u>
<u>68699</u>	<u>4-9-90</u>

The above documents are based on FDEP Bureau of Surveying and Mapping Record Information.

I hereby certify the monument and accessories shown above were field located on 2-17-05.

**Arthur W. Parsons, County Surveyor**  
Professional Surveyor and Mapper  
Florida Certificate No. 2987  
Date Signed 12-19-05

Lee County Department of Transportation  
1500 Monroe Street  
Fort Myers, Florida 33901  
Phone: (239) 479-8900

POINT NO. 195

BLM REFERENCE NO. T43SR25E340300