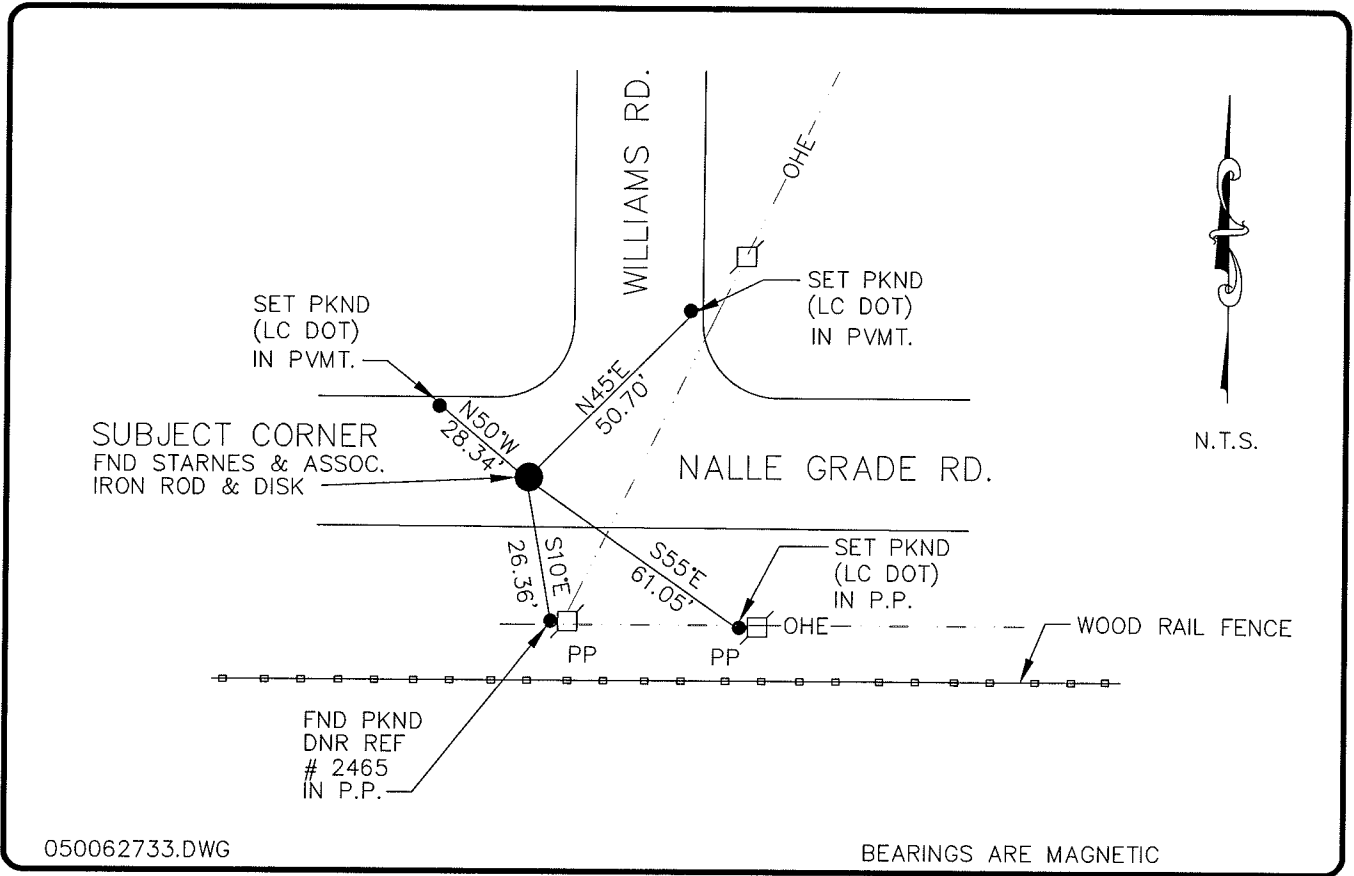


LAND CORNER RECORD

**PUBLIC WORKS
LEE COUNTY, FLORIDA**

Address - 1500 Monroe St., Ft. Myers, Fla. 33901

Phone : (239) 479-8900



050062733.DWG

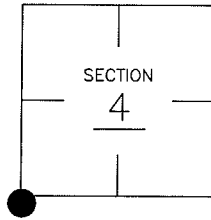
BEARINGS ARE MAGNETIC

COMMENTS:

STARNES FOUND A RAILROAD SPIKE IN 1981 AND LATER RESET WITH AN IRON ROD AND ALUM. DISK PLS #2465.

CORNER DESCRIPTION

SW Corner
Section 4
Township 43
Range 25



HORIZONTAL POSITION INFORMATION

Florida West Zone, NAD 1983(1990 Adjustment)
 Northing(ft) 880304.65 Easting(ft) 712880.47
 Latitude 26°45'19.50553" Longitude 81°49'34.32944"
 Scale Factor 0.99994486

EXISTING CERTIFIED CORNER RECORDS

Document No.	Date
13815	11-21-81

The above documents are based on FDEP Bureau of Surveying and Mapping Record Information.

I hereby certify the monument and accessories shown above were field located on 6-6-04.

Arthur W. Parsons, County Surveyor
 Professional Surveyor and Mapper
 Florida Certificate No. 2987
 Date Signed 12-19-06

Lee County Department of Transportation
 1500 Monroe Street
 Fort Myers, Florida 33901
 Phone: (239) 479-8900

POINT NO. 7

BLM REFERENCE NO. T43SR25E300600