

FLORIDA DEPARTMENT OF ENVIRONMENTAL PROTECTION
CERTIFIED CORNER RECORD

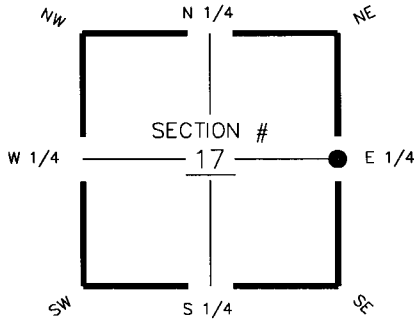
094434

DOC. # _____

CORNER DESCRIPTION:

Depict corner with ●

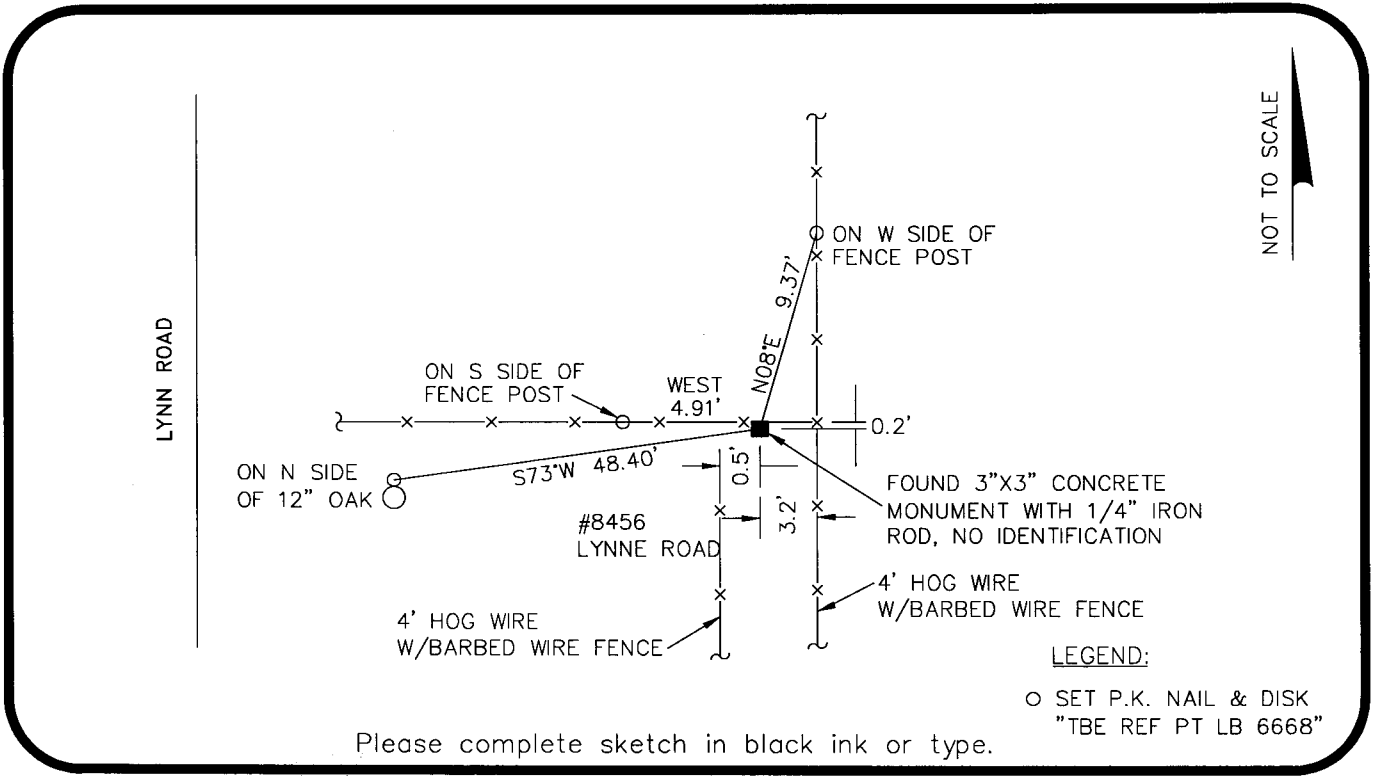
MONUMENTATION DESCRIPTION (EVIDENCE FOUND OR METHOD TO SET)
 FOUND 3"x3" CONCRETE MONUMENT WITH 1/4" IRON ROD, NO IDENTIFICATION



E 1/4 corner of Section 17
 Twp 43 S, Rge 25 E
 Tallahassee Base Meridian,
 Charlotte County(s), Florida

HORIZONTAL POSITION INFORMATION (if determined):

Latitude 26°44'00.3618" Longitude 81°49'34.2676"
 Y(NORTHING-Ft.) 872,313.464 X(EASTING-Ft.) 712,896.988 Zone FL West
 Convergence 0°04'41.480" Scale factor 0.9999448663
 Coordinate determination (circle one): Field traverse GPS
 Horizontal datum (circle one): NAD27 NAD83(1986) NAD83(1990) other (explain)
 Accuracy (circle one): 1st 2nd 3rd other _____



Please complete sketch in black ink or type.

SURVEYORS CERTIFICATE:

I certify the monument and accessories indicated above were field located on 2/1/07

[Signature]
 SIGNATURE _____ 5196 PSM NO.
 TBE Group, Inc. 6668 LB NO.
 FIRM OR AGENCY ADDRESS
 380 Park Place Blvd., Suite 300
 Clearwater, Florida 33759
 CITY STATE ZIP
 727.531.3505 PHONE NUMBER DATE 05/05/08

SEND ORIGINAL TO:
 Department of Environmental Protection
 Bureau of Surveying and Mapping
 3900 Commonwealth Boulevard
 Mail Station 105
 Tallahassee, Florida 32399

Processed: 5-14-08 mb
 B.L.M. - I.D. 300440
 QUAD - I.D. 2215 FOR MYERS

EMBOSSSED SEAL OVER SIGNATURE