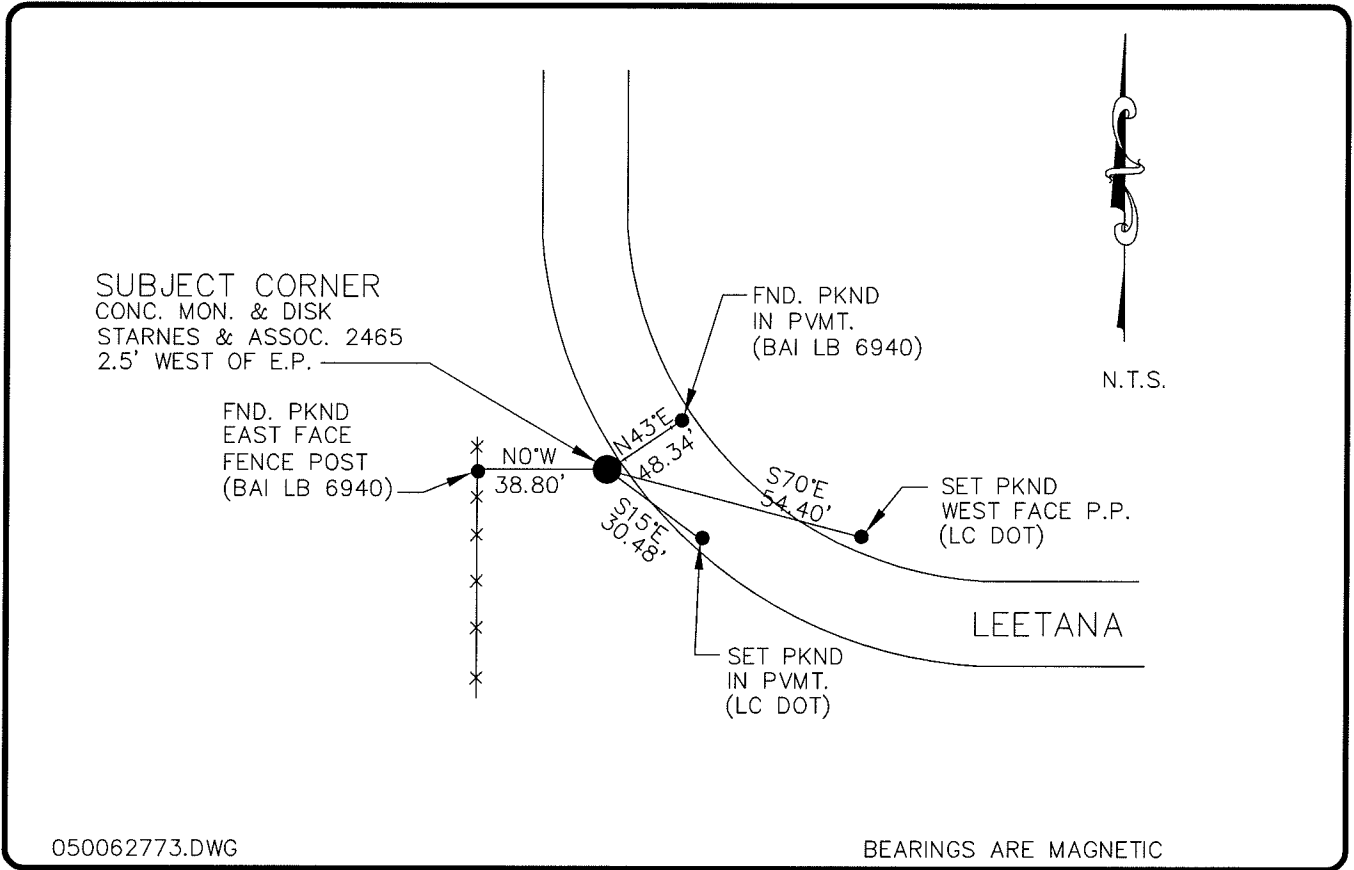


LAND CORNER RECORD

**PUBLIC WORKS
LEE COUNTY, FLORIDA**

Address – 1500 Monroe St., Ft. Myers, Fla. 33901

Phone : (239) 479-8900

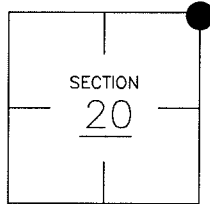


COMMENTS:

FOUND CONC. MONUMENT SET BY STARNES & ASSCS. WITH DISK STAMPED STARNES & ASSOCIATES PLS 2465 2.5' WEST OF EDGE OF PVMT., ACCEPTED LOCALLY.

CORNER DESCRIPTION

NE Corner
Section 20
Township 43
Range 25



HORIZONTAL POSITION INFORMATION

Florida West Zone, NAD 1983(1990 Adjustment)
 Northing(ft) 869654.03 Easting(ft) 712919.62
 Latitude 26°43'33.986262" Longitude 81°49'04.6866698"
 Scale Factor 0.99994486

EXISTING CERTIFIED CORNER RECORDS

Document No.	Date
<u>8014</u>	<u>07-06-04</u>
<u>8840</u>	<u>9-4-80</u>
<u>69343</u>	<u>6-23-99</u>
<u>78415</u>	<u>4-9-03</u>

The above documents are based on FDEP Bureau of Surveying and Mapping Record Information.

I hereby certify the monument and accessories shown above were field located on 5-25-04

Arthur W. Parsons, County Surveyor
 Professional Surveyor and Mapper
 Florida Certificate No. 2987
 Date Signed 12-19-05

Lee County Department of Transportation
 1500 Monroe Street
 Fort Myers, Florida 33901
 Phone: (239) 479-8900

POINT NO. 12

BLM REFERENCE NO. T43SR25E300400