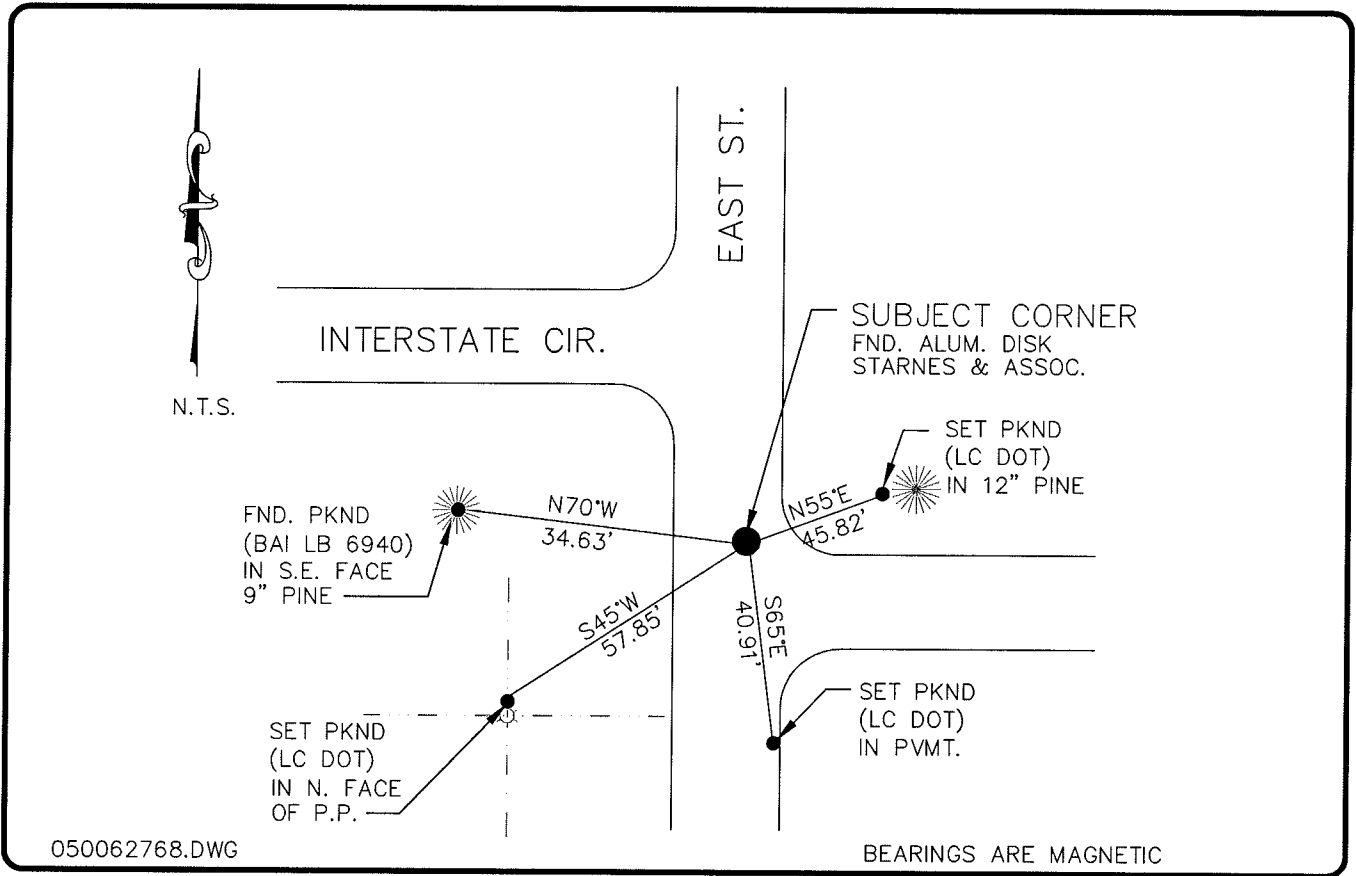


LAND CORNER RECORD

**PUBLIC WORKS
LEE COUNTY, FLORIDA**

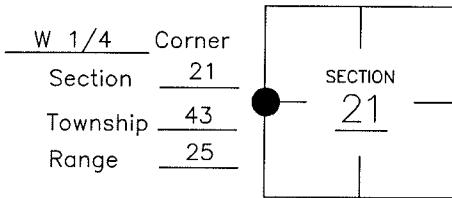
Address - 1500 Monroe St., Ft. Myers, Fla. 33901

Phone : (239) 479-8900



COMMENTS:

CORNER DESCRIPTION



STARNES RESTORED 1/4 SEC. CORNER BY USING SUBDIVISION PCP TIES IN $\frac{1}{4}$ OF ROAD. 1-75/BAYSHORE ROAD INDUSTRIAL PARK P.B. 34, PG. 42-45 LEE COUNTY PUBLIC RECORDS.

HORIZONTAL POSITION INFORMATION

Florida West Zone, NAD 1983(1990 Adjustment)
 Northing(ft) 866981.94 Easting(ft) 712920.97
 Latitude 26°43'07".559170 Longitude 81°49'34".083221
 Scale Factor 0.99994486

EXISTING CERTIFIED CORNER RECORDS

Document No.	Date
<u>69342</u>	<u>6-23-99</u>
<u>78416</u>	<u>4-9-2003</u>

The above documents are based on FDEP Bureau of Surveying and Mapping Record Information.

I hereby certify the monument and accessories shown above were field located on 7-7-04.

Arthur W. Parsons, County Surveyor
 Professional Surveyor and Mapper
 Florida Certificate No. 2987
 Date Signed 12-19-05

Lee County Department of Transportation
 1500 Monroe Street
 Fort Myers, Florida 33901
 Phone: (239) 479-8900

POINT NO. 111

BLM REFERENCE NO. T43SR25E300340