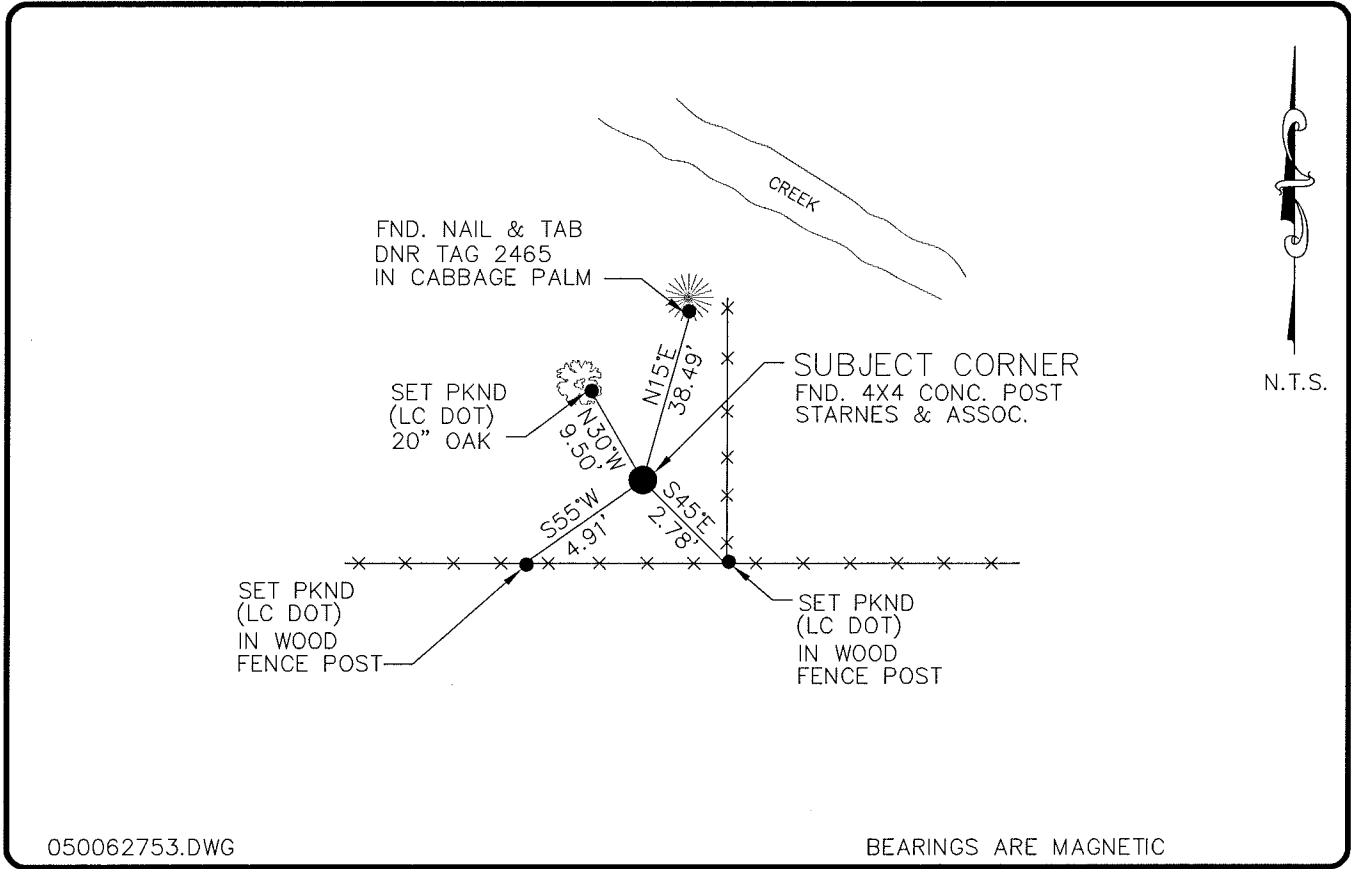


LAND CORNER RECORD

**PUBLIC WORKS
LEE COUNTY, FLORIDA**

Address - 1500 Monroe St., Ft. Myers, Fla. 33901

Phone : (239) 479-8900

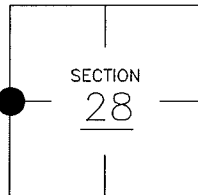


COMMENTS:

DNR RECORDS SHOW STARNES FINDING BOTTOM OF 4"X4" CONC. MON. & RUST STRAIN UNDER MON. REPLACED WITH CONC. POST MON. WAS LOCATED BY BEN HOMOLA IN 1990 AND FDOT IN 1999. LOCALLY ACCEPTED AS WEST 1/4 COR. SEC. 28.

CORNER DESCRIPTION

W 1/4 Corner
Section 28
Township 43
Range 25



HORIZONTAL POSITION INFORMATION

Florida West Zone, NAD 1983(1990 Adjustment)
Northing(ft) 861653.21 Easting(ft) 712942.07
Latitude 26°42'14.78348" Longitude 81°49'33.93082"
Scale Factor 0.99994487

EXISTING CERTIFIED CORNER RECORDS

Document No.	Date
<u>19092</u>	<u>1-5-84</u>
<u>35223</u>	<u>4-9-90</u>
<u>68705</u>	<u>6-9-99</u>

The above documents are based on FDEP Bureau of Surveying and Mapping Record Information.

I hereby certify the monument and accessories shown above were field located on 2-22-05

Arthur W. Parsons, County Surveyor
Professional Surveyor and Mapper
Florida Certificate No. 2987
Date Signed 12-19-05

Lee County Department of Transportation
1500 Monroe Street
Fort Myers, Florida 33901
Phone: (239) 479-8900

POINT NO. 204

BLM REFERENCE NO. T43SR25E300240