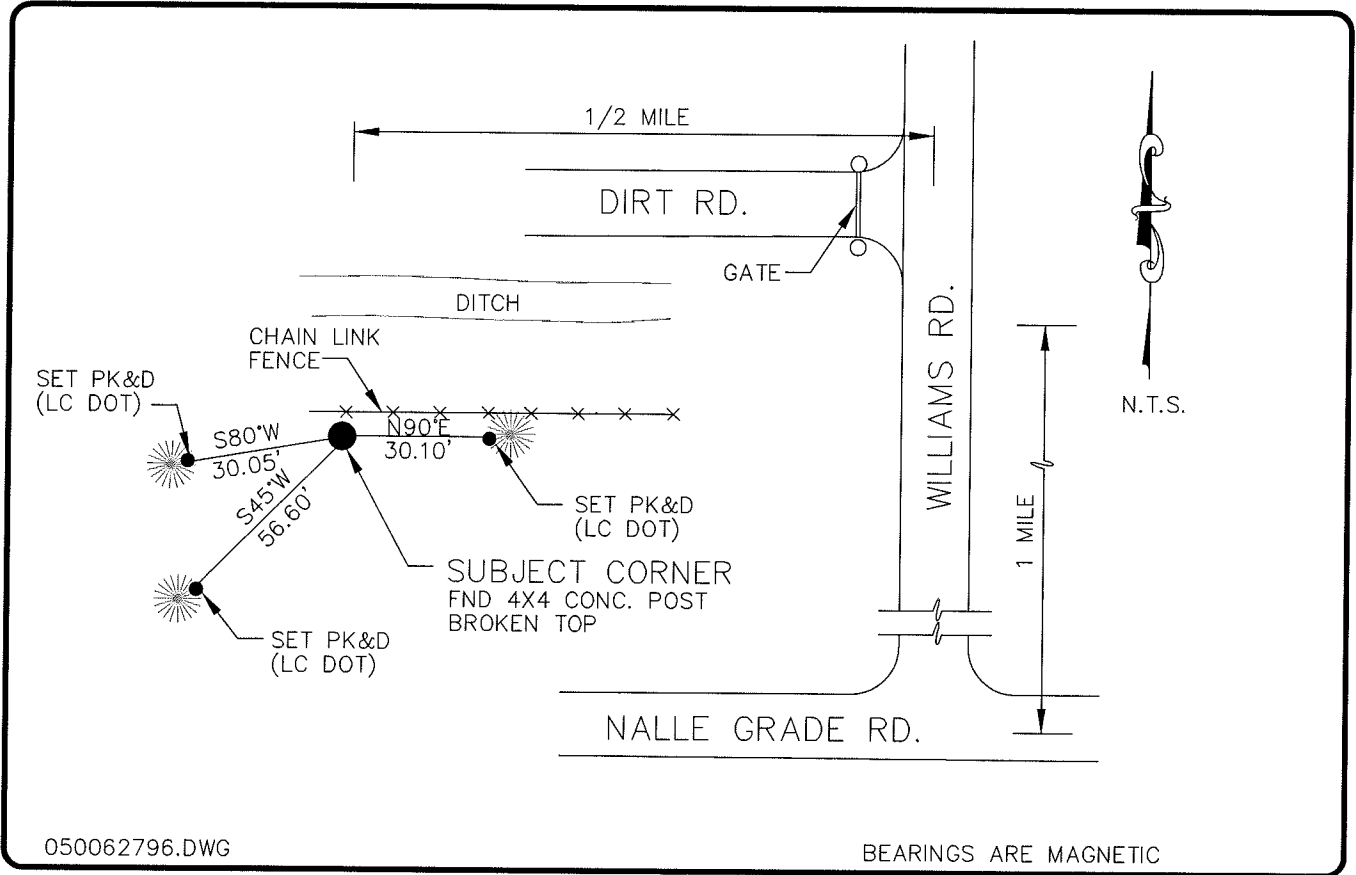


LAND CORNER RECORD

**PUBLIC WORKS
LEE COUNTY, FLORIDA**

Address - 1500 Monroe St., Ft. Myers, Fla. 33901

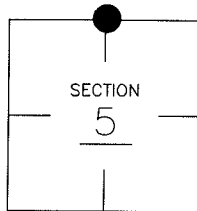
Phone : (239) 479-8900



COMMENTS:

CORNER DESCRIPTION

N 1/4 Corner
Section 5
Township 43
Range 25



CONC. POST HAS BEEN USED AND ACCEPTED BY LOCAL SURVEYORS. NO CERTIFIED CORNER REFERENCE FORMS WERE FOUND FOR THIS CORNER.

HORIZONTAL POSITION INFORMATION

Florida West Zone, NAD 1983(1990 Adjustment)
Northing(ft) 885543.73 Easting(ft) 710298.98
Latitude 26°46'11.426972" Longitude 81°50'02.733075"
Scale Factor 0.99994453

EXISTING CERTIFIED CORNER RECORDS

Document No.	Date
NO C.C.R. FOUND	

The above documents are based on FDEP Bureau of Surveying and Mapping Record Information.

I hereby certify the monument and accessories shown above were field located on 4-04-05.

(Signature)

Arthur W. Parsons, County Surveyor
Professional Surveyor and Mapper
Florida Certificate No. 2987
Date Signed 12-19-05

Lee County Department of Transportation
1500 Monroe Street
Fort Myers, Florida 33901
Phone: (239) 479-8900

POINT NO. 236

BLM REFERENCE NO. T43SR25E240700