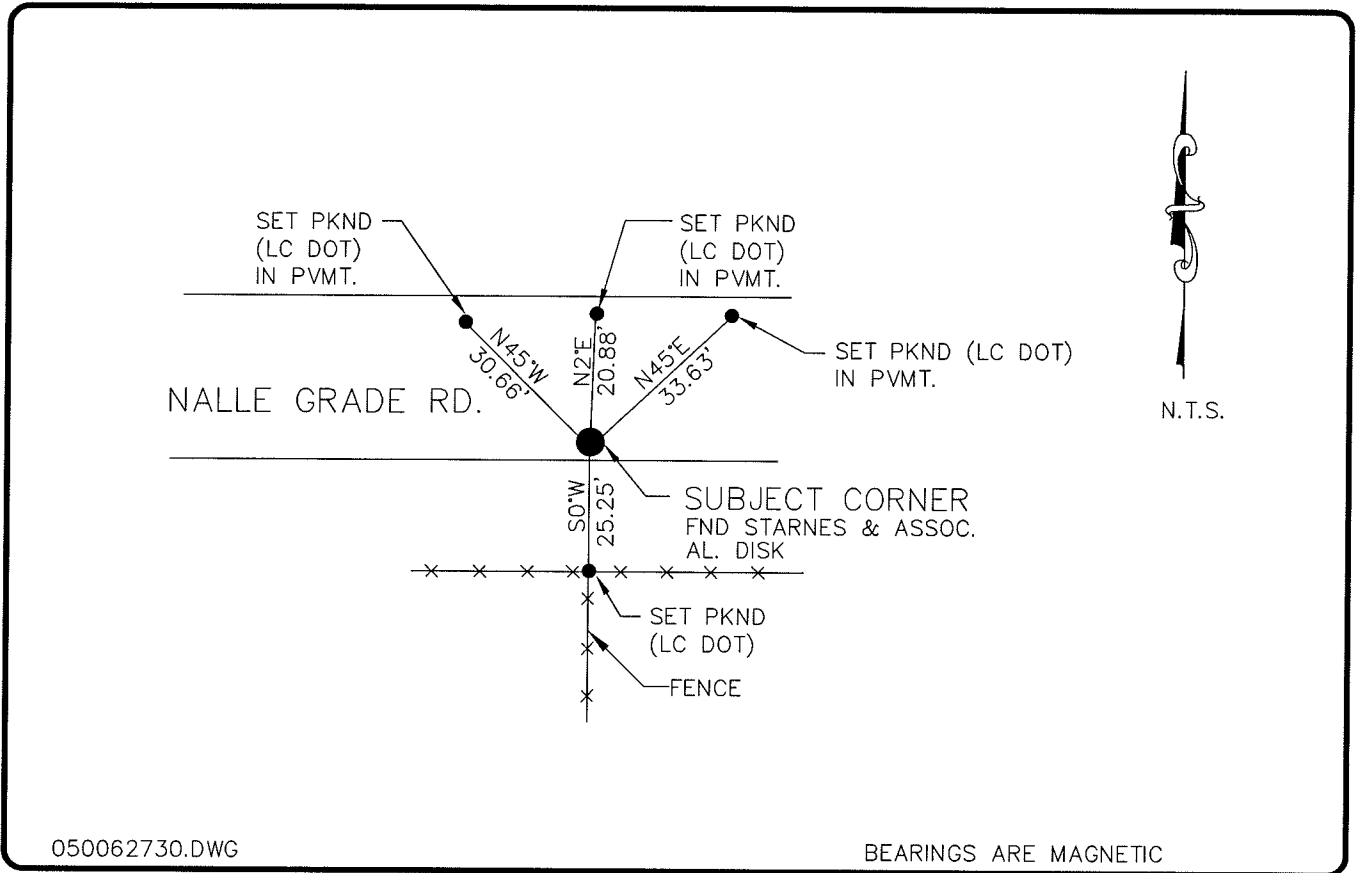


LAND CORNER RECORD

PUBLIC WORKS
LEE COUNTY, FLORIDA

Address - 1500 Monroe St., Ft. Myers, Fla. 33901

Phone : (239) 479-8900



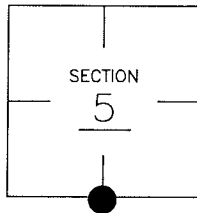
050062730.DWG

BEARINGS ARE MAGNETIC

COMMENTS:

CORNER DESCRIPTION

S 1/4 Corner
Section 5
Township 43
Range 25



STARNES FOUND AN IRON ROD 8" BELOW PAVEMENT AND RESET. NOTED CORNER EVIDENCE AND ACCEPTED AS 1/4 COR. CORNER IS NOW A STARNES ALUM. DISK PLS 2465.

HORIZONTAL POSITION INFORMATION

Florida West Zone, NAD 1983(1990 Adjustment)
Northing(ft) 880308.88 Easting(ft) 710282.13
Latitude 26°45'19.58176" Longitude 81°50'02.99434"
Scale Factor 0.99994453

EXISTING CERTIFIED CORNER RECORDS

Document No.	Date
<u>14740</u>	<u>12-4-81</u>

The above documents are based on FDEP Bureau of Surveying and Mapping Record Information.

I hereby certify the monument and accessories shown above were field located on 10-7-04.

Arthur W. Parsons, County Surveyor
Professional Surveyor and Mapper
Florida Certificate No. 2987
Date Signed 12-19-05

Lee County Department of Transportation
1500 Monroe Street
Fort Myers, Florida 33901
Phone: (239) 479-8900

POINT NO. 61

BLM REFERENCE NO. T43SR25E240600