

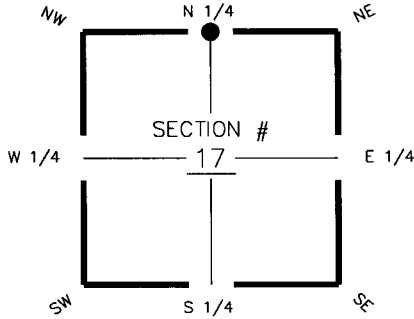
FLORIDA DEPARTMENT OF ENVIRONMENTAL PROTECTION CERTIFIED CORNER RECORD

DOC. # 094432

CORNER DESCRIPTION:

Depict corner with **●**

MONUMENTATION DESCRIPTION (EVIDENCE FOUND OR METHOD TO SET)
FOUND ALUMINUM DISK STAMPED "STARNES AND ASSOC. P.L.S. 2465"

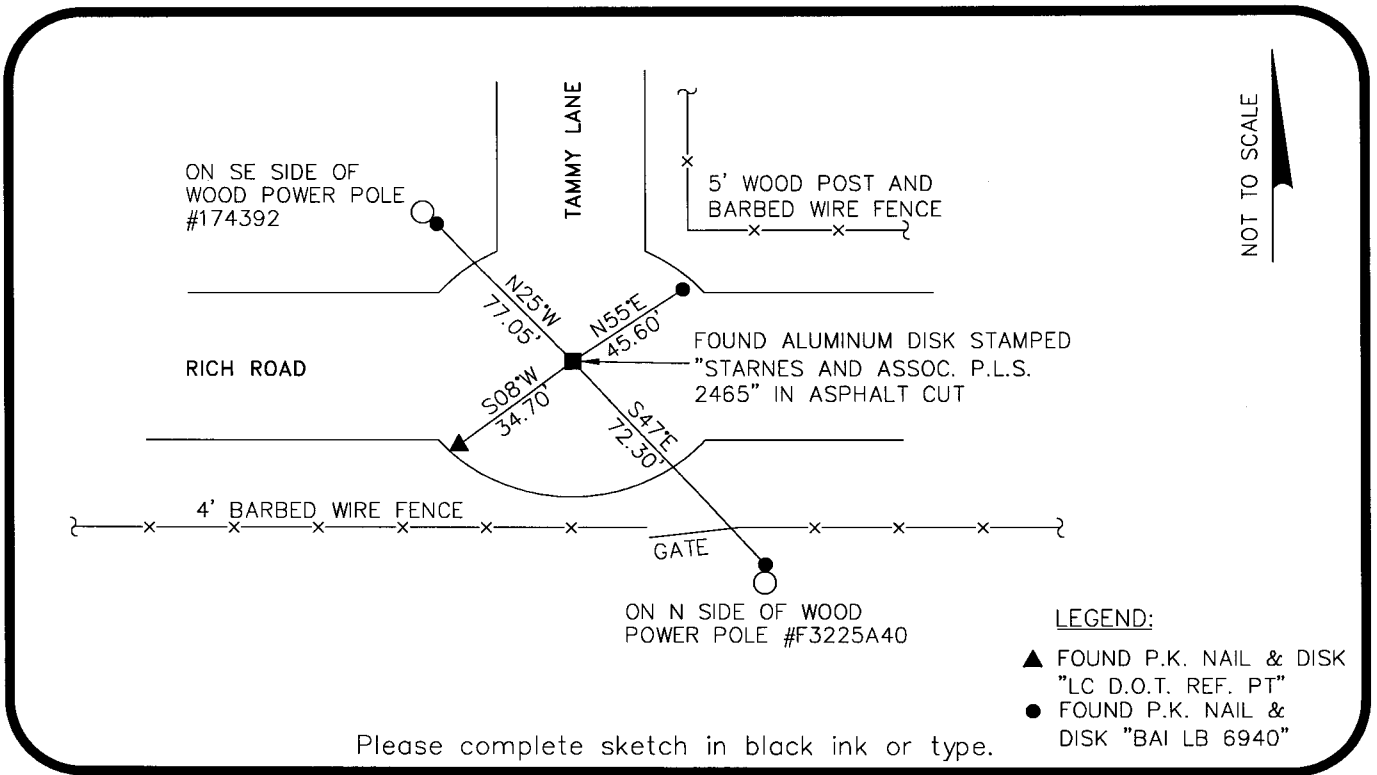


N 1/4 corner of Section 17
Twp 43 S, Rge 25 E
Tallahassee Base Meridian,
Charlotte County(s), Florida

HORIZONTAL POSITION INFORMATION (if determined):

Latitude 26°44'26.6562" Longitude 81°50'03.1995"
Y(NORTHING-Ft.) 874,964.929 X(EASTING-Ft.) 710,270.495 Zone FL West
Convergence 0°04'28.533" Scale factor 0.9999445326

Coordinate determination (circle one): Field traverse (GPS)
Horizontal datum (circle one): NAD27 NAD83(1986) NAD83(1990) other (explain)
Accuracy (circle one): 1st 2nd 3rd other _____



- LEGEND:**
- ▲ FOUND P.K. NAIL & DISK "LC D.O.T. REF. PT"
 - FOUND P.K. NAIL & DISK "BAI LB 6940"

Please complete sketch in black ink or type.

SURVEYORS CERTIFICATE:

I certify the monument and accessories indicated above were field located on 2/1/07

[Signature]
SIGNATURE _____ 5196
TBE Group, Inc. PSM NO. 6668
FIRM OR AGENCY LB NO. _____
380 Park Place Blvd., Suite 300
STATE ADDRESS
Clearwater, Florida 33759
CITY STATE ZIP
727.531.3505 DATE 05/05/08
PHONE NUMBER

SEND ORIGINAL TO:
Department of Environmental Protection
Bureau of Surveying and Mapping
3900 Commonwealth Boulevard
Mail Station 105
Tallahassee, Florida 32399

Processed: 5-14-08 D.E.P. USE ONLY MB
B.L.M. - I.D. 240500
QUAD - I.D. 2215 Fort Myers

EMBOSSSED SEAL OVER SIGNATURE