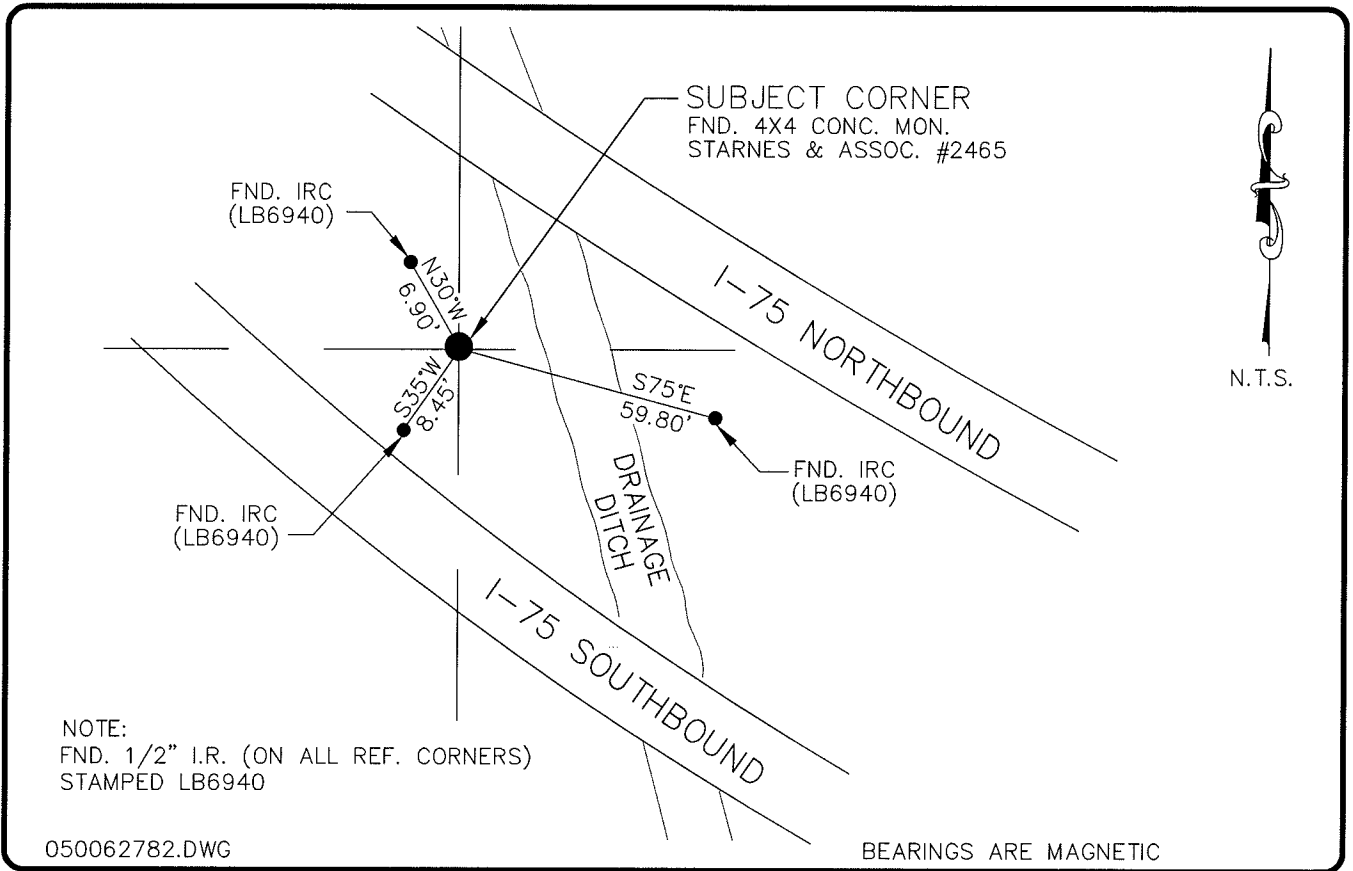


LAND CORNER RECORD

**PUBLIC WORKS
LEE COUNTY, FLORIDA**

Address - 1500 Monroe St., Ft. Myers, Fla. 33901

Phone : (239) 479-8900

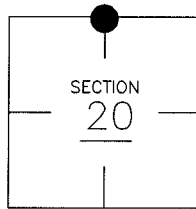


COMMENTS:

FND. STARNES & ASSOCIATES CONC. MON. AND ALUM. DISK, VERIFIED LOCATION WITH C.C.R. #68697 AND 78414 (LOCALLY ACCEPTED CORNER)

CORNER DESCRIPTION

N 1/4 Corner
Section 20
Township 43
Range 25



HORIZONTAL POSITION INFORMATION

Florida West Zone, NAD 1983(1990 Adjustment)
Northing(ft) 869634.60 Easting(ft) 710295.65
Latitude 26°43'33.865185" Longitude 81°50'02.998684"
Scale Factor 0.99994453

EXISTING CERTIFIED CORNER RECORDS

| Document No. | Date |
|--------------|----------------|
| <u>68692</u> | <u>6-16-99</u> |
| <u>78414</u> | <u>4-9-03</u> |
| | |
| | |
| | |

The above documents are based on FDEP Bureau of Surveying and Mapping Record Information.

I hereby certify the monument and accessories shown above were field located on 3-31-05.

Arthur W. Parsons, County Surveyor
Professional Surveyor and Mapper
Florida Certificate No. 2987
Date Signed 12-19-05

Lee County Department of Transportation
1500 Monroe Street
Fort Myers, Florida 33901
Phone: (239) 479-8900

POINT NO. 186

BLM REFERENCE NO. T43SR25E240400