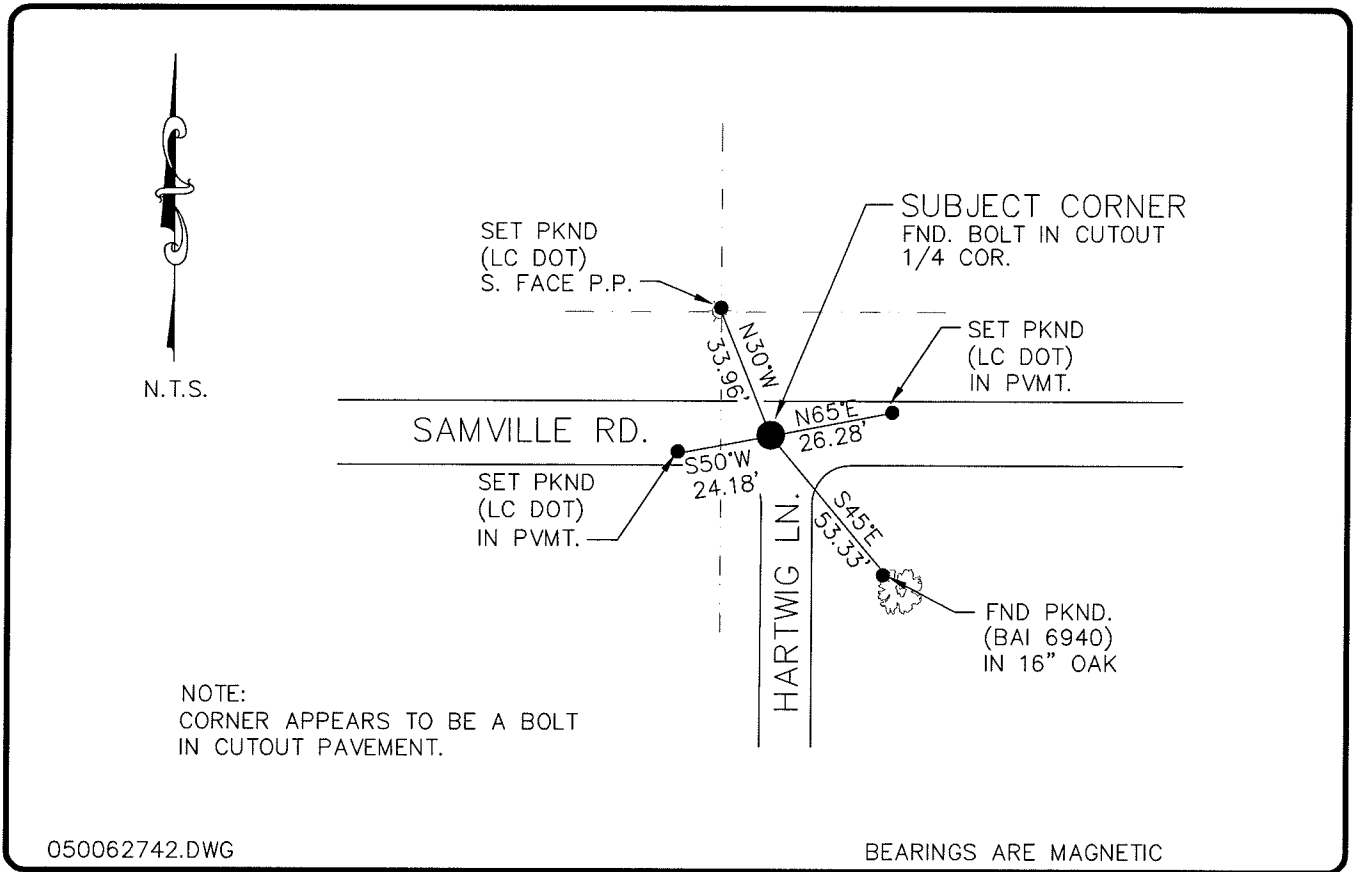


LAND CORNER RECORD

**PUBLIC WORKS
LEE COUNTY, FLORIDA**

Address - 1500 Monroe St., Ft. Myers, Fla. 33901

Phone : (239) 479-8900



050062742.DWG

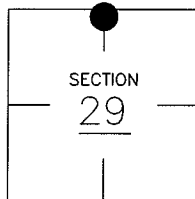
BEARINGS ARE MAGNETIC

COMMENTS:

PAUL DUKAS DESCRIBES 1/4 CORNER AS A RAILROAD SPIKE IN 1983, C.C.R. #18115 AND SET REFERENCE POINTS. FDOT INDICATES 1/2" IRON ROD W/CAP #2465 IN 1990. WHEELER DESCRIBES CORNER AS A RAILROAD SPIKE IN 2003.

CORNER DESCRIPTION

N 1/4 Corner
Section 29
Township 43
Range 25



HORIZONTAL POSITION INFORMATION

Florida West Zone, NAD 1983(1990 Adjustment)

Northing(ft) 864292.18 Easting(ft) 710291.18

Latitude 26°42'40.95451" Longitude 81°50'03.12456"

Scale Factor 0.99994453

EXISTING CERTIFIED CORNER RECORDS

Document No.	Date
<u>188115</u>	<u>12-22-83</u>
<u>68702</u>	<u>6-28-99</u>
<u>78418</u>	<u>4-9-03</u>

The above documents are based on FDEP Bureau of Surveying and Mapping Record Information.

I hereby certify the monument and accessories shown above were field located on 7-7-04.

Arthur W. Parsons, County Surveyor
Professional Surveyor and Mapper
Florida Certificate No. 2987
Date Signed 12-19-05

Lee County Department of Transportation
1500 Monroe Street
Fort Myers, Florida 33901
Phone: (239) 479-8900

POINT NO. 110

BLM REFERENCE NO. T43SR25E240300