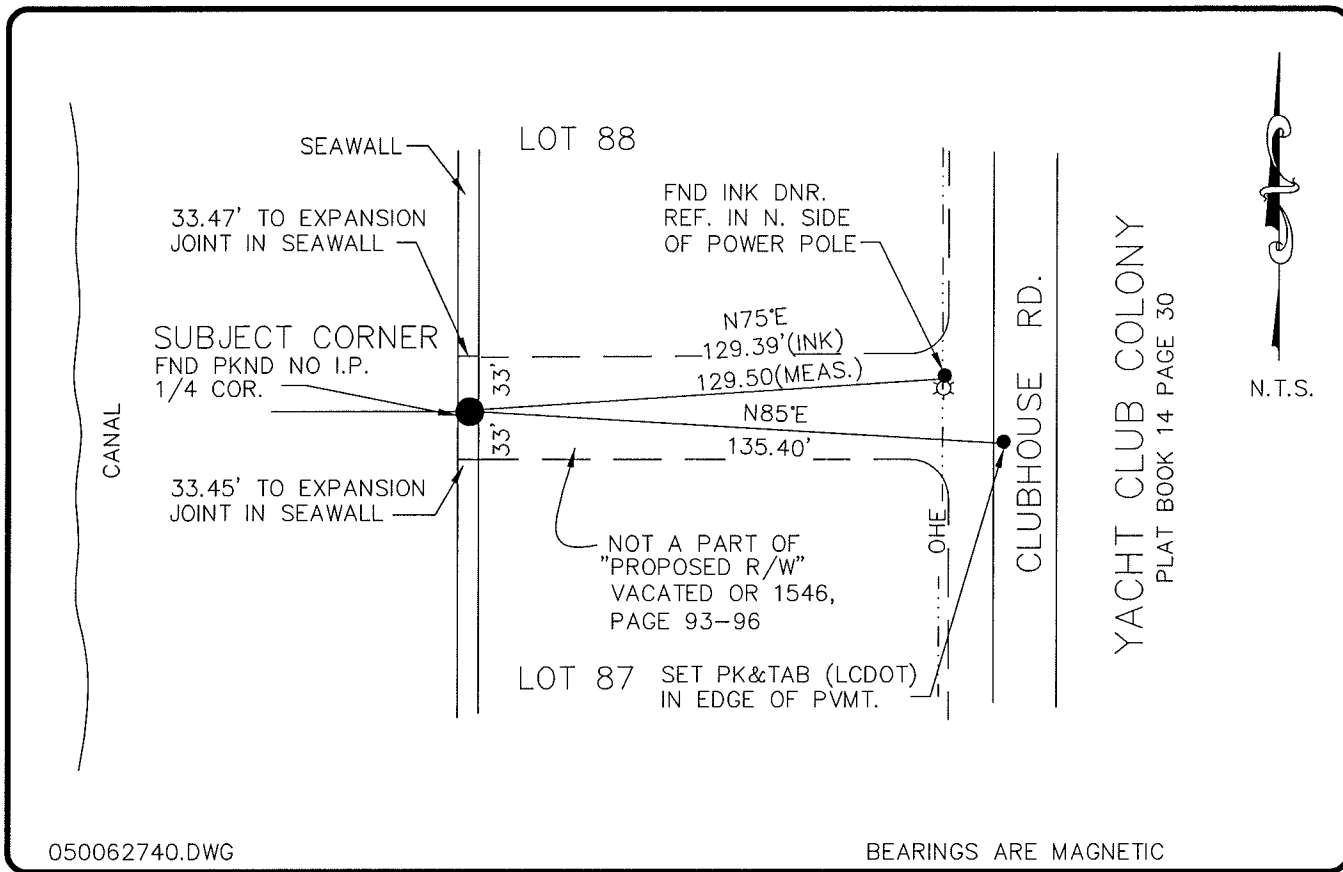


LAND CORNER RECORD

**PUBLIC WORKS
LEE COUNTY, FLORIDA**

Address - 1500 Monroe St., Ft. Myers, Fla. 33901

Phone : (239) 479-8900



050062740.DWG

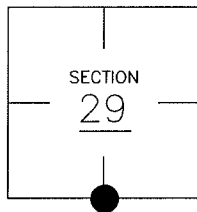
BEARINGS ARE MAGNETIC

COMMENTS:

4"x4" CONC. MONUMENT FOUND BY PAUL DUKAS (INK ENG.) IN 1983, WAS IDENTIFIED AS BEING SET BY LARRY HAY IN 1963. A NAIL AND TAB NOW IN A SEAWALL CAP. THIS CORNER WAS RESTORED BY OTHERS USING SUBDIVISION OCCUPATION.

CORNER DESCRIPTION

S 1/4 Corner
Section 29
Township 43
Range 25



HORIZONTAL POSITION INFORMATION

Florida West Zone, NAD 1983(1990 Adjustment)
Northing(ft) 858977.91 Easting(ft) 710331.97
Latitude 26°41'48.32188" Longitude 81°50'02.75107"
Scale Factor 0.99994454

EXISTING CERTIFIED CORNER RECORDS

Document No.	Date
<u>18114</u>	<u>12-22-83</u>
<u>69344</u>	<u>6-28-99</u>

The above documents are based on FDEP Bureau of Surveying and Mapping Record Information.

I hereby certify the monument and accessories shown above were field located on 12-20-04.

Arthur W. Parsons, County Surveyor
Professional Surveyor and Mapper
Florida Certificate No. 2987
Date Signed 1-17-06

Lee County Department of Transportation
1500 Monroe Street
Fort Myers, Florida 33901
Phone: (239) 479-8900

POINT NO. 157

BLM REFERENCE NO. T43SR25E240200