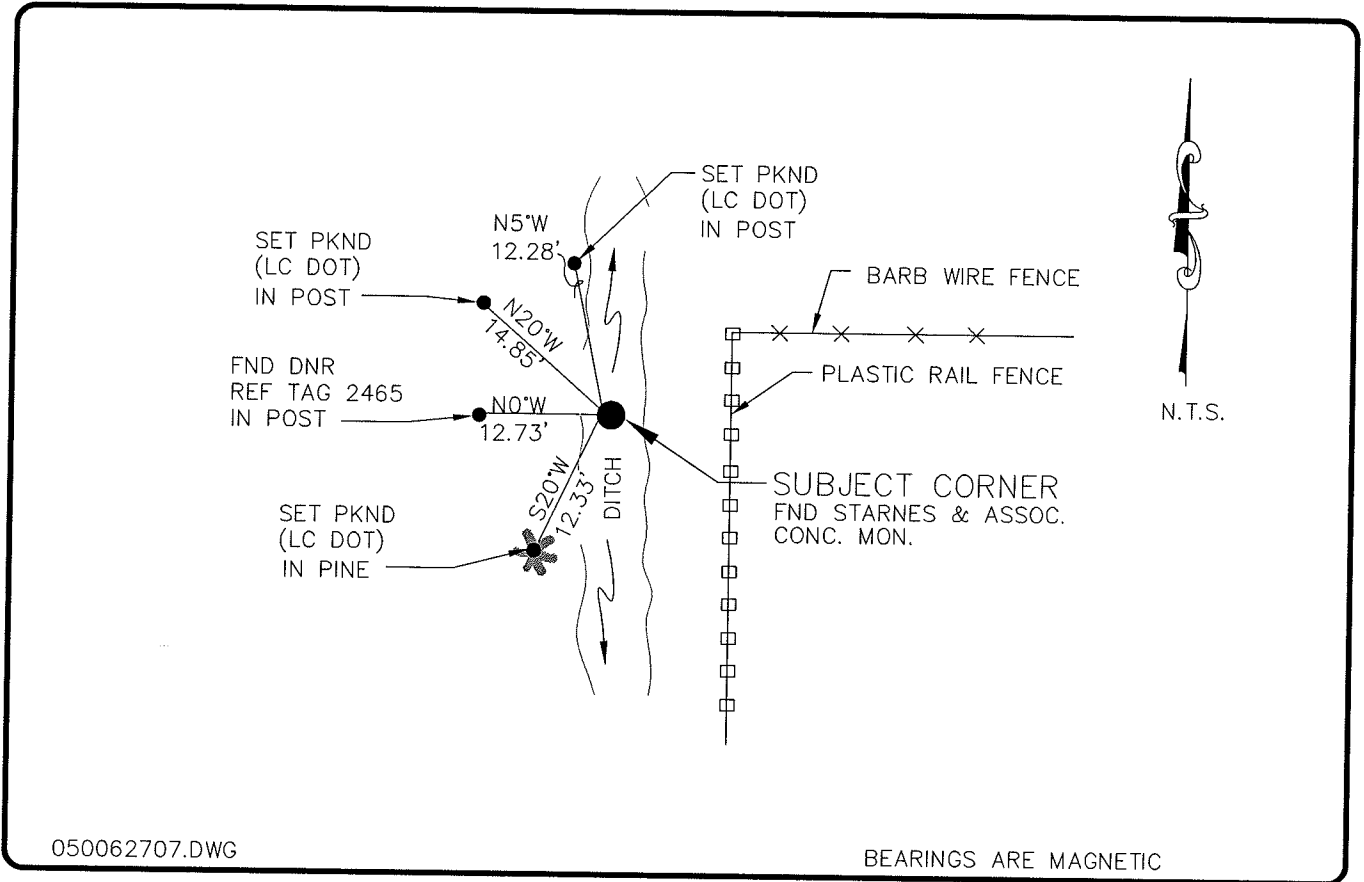


LAND CORNER RECORD

PUBLIC WORKS  
LEE COUNTY, FLORIDA

Address - 1500 Monroe St., Ft. Myers, Fla. 33901

Phone : (239) 479-8900



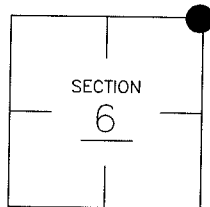
050062707.DWG

BEARINGS ARE MAGNETIC

COMMENTS:

CORNER DESCRIPTION

NE Corner  
Section 6  
Township 43  
Range 25



FOUND STARNES AND ASSOCIATES AT SECTION CORNER. LOCATION GENERALLY AGREES WITH STARNES SECTION DRAWING.

HORIZONTAL POSITION INFORMATION

Florida West Zone, NAD 1983(1990 Adjustment)

Northing(ft) 885555.08 Easting(ft) 707642.95

Latitude 26°46'11.57179" Longitude 81°50'32.03803"

Scale Factor 0.99994421

EXISTING CERTIFIED CORNER RECORDS

Document No.	Date
NONE FOUND	

The above documents are based on FDEP Bureau of Surveying and Mapping Record Information.

I hereby certify the monument and accessories shown above were field located on 7-6-04.

Arthur W. Parsons, County Surveyor  
Professional Surveyor and Mapper  
Florida Certificate No. 2987  
Date Signed 12-19-05

Lee County Department of Transportation  
1500 Monroe Street  
Fort Myers, Florida 33901  
Phone: (239) 479-8900

POINT NO. 9

BLM REFERENCE NO. T43SR25E200700