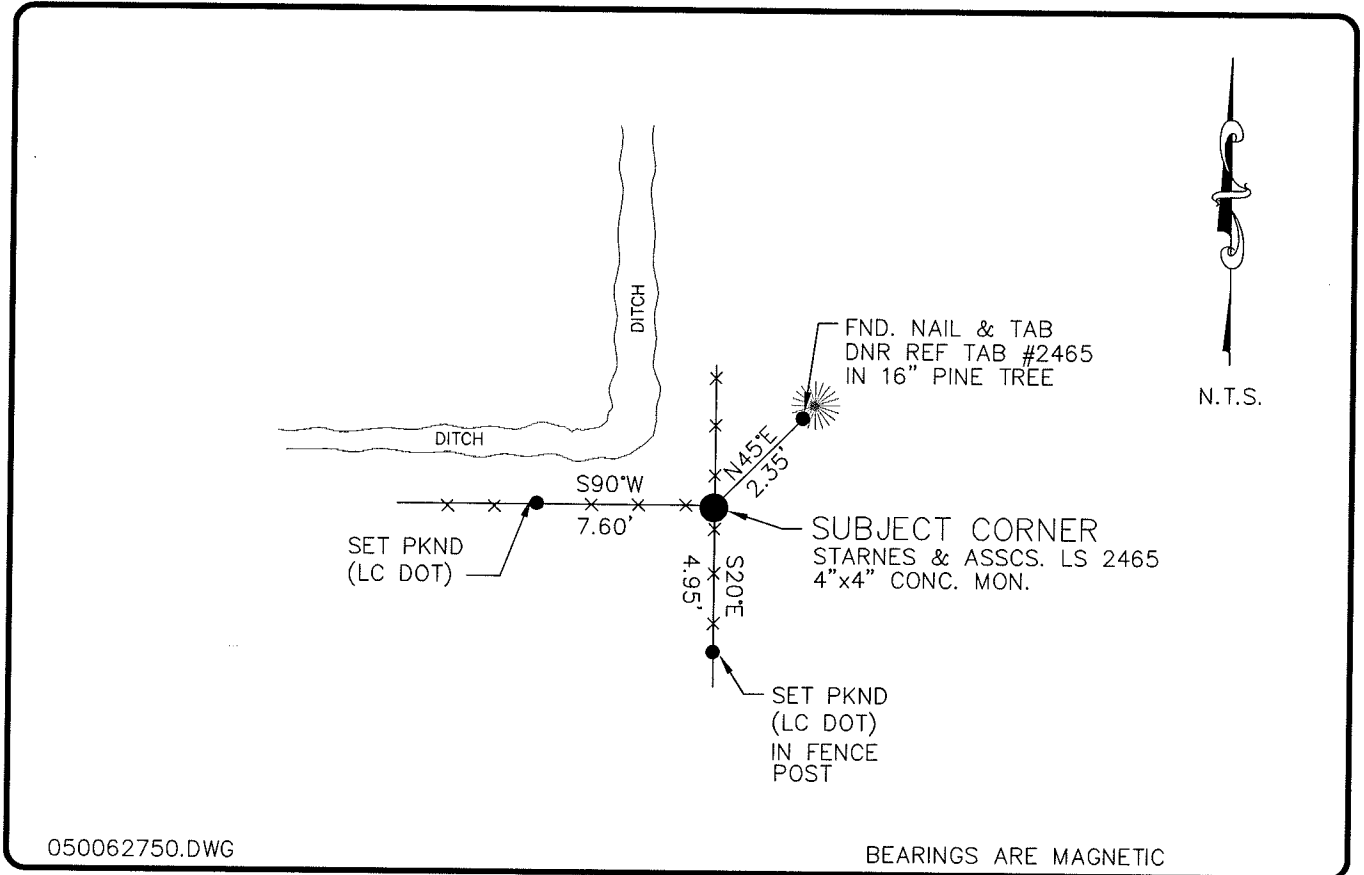


LAND CORNER RECORD

PUBLIC WORKS
LEE COUNTY, FLORIDA

Address - 1500 Monroe St., Ft. Myers, Fla. 33901

Phone : (239) 479-8900



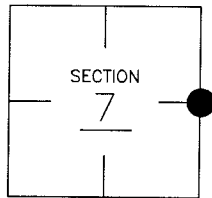
050062750.DWG

BEARINGS ARE MAGNETIC

COMMENTS:

CORNER DESCRIPTION

E 1/4 Corner
Section 7
Township 43
Range 25



HORIZONTAL POSITION INFORMATION

Florida West Zone, NAD 1983(1990 Adjustment)
 Northing(ft) 877637.69 Easting(ft) 707669.73
 Latitude 26°44'53.16008" Longitude 81°50'31.85119"
 Scale Factor 0.99994421

EXISTING CERTIFIED CORNER RECORDS

Document No.	Date
NONE FOUND	

The above documents are based on FDEP Bureau of Surveying and Mapping Record Information.

I hereby certify the monument and accessories shown above were field located on 1-10-05.

Arthur W. Parsons, County Surveyor
 Professional Surveyor and Mapper
 Florida Certificate No. 2987
 Date Signed 12-19-05

Lee County Department of Transportation
 1500 Monroe Street
 Fort Myers, Florida 33901
 Phone: (239) 479-8900

POINT NO. 176

BLM REFERENCE NO. T43SR25E200540