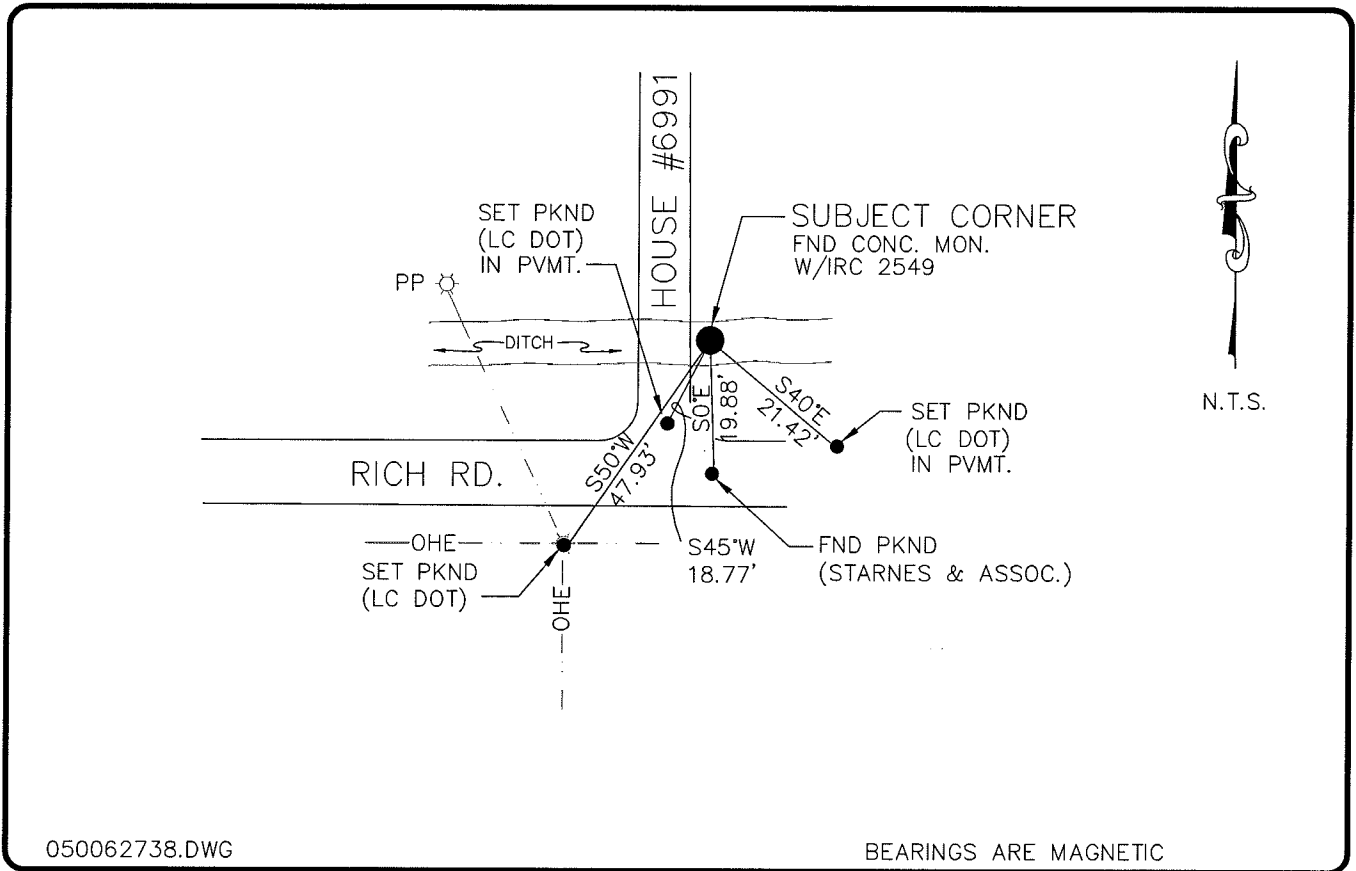


LAND CORNER RECORD

**PUBLIC WORKS
LEE COUNTY, FLORIDA**

Address - 1500 Monroe St., Ft. Myers, Fla. 33901

Phone : (239) 479-8900



050062738.DWG

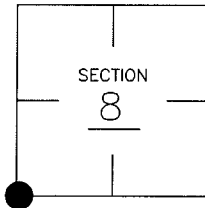
BEARINGS ARE MAGNETIC

COMMENTS:

FOUND 6"X6" CONC. MONUMENT AT SEC. COR. WITH I.D. NO. 2549. GENERALLY ACCEPTED AS SECTION CORNER

CORNER DESCRIPTION

SW Corner
Section 8
Township 43
Range 25



HORIZONTAL POSITION INFORMATION

Florida West Zone, NAD 1983(1990 Adjustment)

Northing(ft) 874957.01 Easting(ft) 707666.27

Latitude 26°44'26.61074" Longitude 81°50'31.92673"

Scale Factor 0.99994421

EXISTING CERTIFIED CORNER RECORDS

Document No.	Date
NONE FOUND	

The above documents are based on FDEP Bureau of Surveying and Mapping Record Information.

I hereby certify the monument and accessories shown above were field located on 07-06-04.

Arthur W. Parsons, County Surveyor
Professional Surveyor and Mapper
Florida Certificate No. 2987
Date Signed 12-19-05

Lee County Department of Transportation
1500 Monroe Street
Fort Myers, Florida 33901
Phone: (239) 479-8900

POINT NO. 11

BLM REFERENCE NO. T43SR25E200500