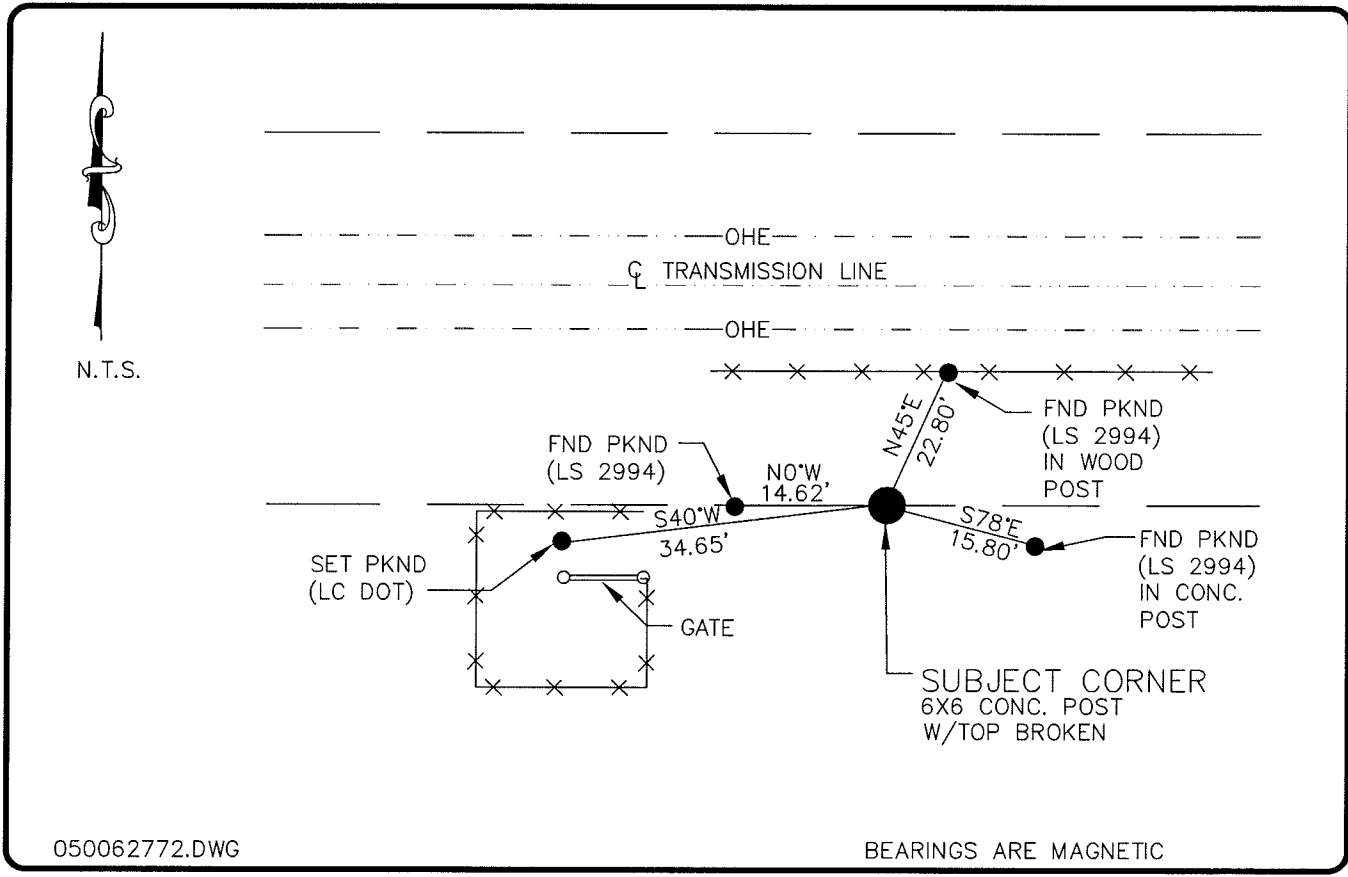


LAND CORNER RECORD

**PUBLIC WORKS
LEE COUNTY, FLORIDA**

Address - 1500 Monroe St., Ft. Myers, Fla. 33901

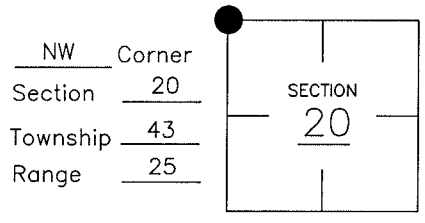
Phone : (239) 479-8900



COMMENTS:

CORNER HAS BEEN ACCEPTED AND REFERENCED IN BY LOCAL SURVEYORS AND OTHER AGENCYS.

CORNER DESCRIPTION



HORIZONTAL POSITION INFORMATION

Florida West Zone, NAD 1983(1990 Adjustment)
 Northing(ft) 869647.38 Easting(ft) 715566.39
 Latitude 26°43'33.961022" Longitude 81°49'34.043101"
 Scale Factor 0.99994421

EXISTING CERTIFIED CORNER RECORDS

Document No.	Date
<u>8841</u>	<u>11-15-80</u>
<u>68691</u>	<u>6-16-99</u>
<u>78413</u>	<u>4-9-03</u>

The above documents are based on FDEP Bureau of Surveying and Mapping Record Information.

I hereby certify the monument and accessories shown above were field located on 5-3-05.

(Signature)
Arthur W. Parsons, County Surveyor
 Professional Surveyor and Mapper
 Florida Certificate No. 2987
 Date Signed 12-19-05

Lee County Department of Transportation
 1500 Monroe Street
 Fort Myers, Florida 33901
 Phone: (239) 479-8900

POINT NO. 101

BLM REFERENCE NO. T43SR25E200400