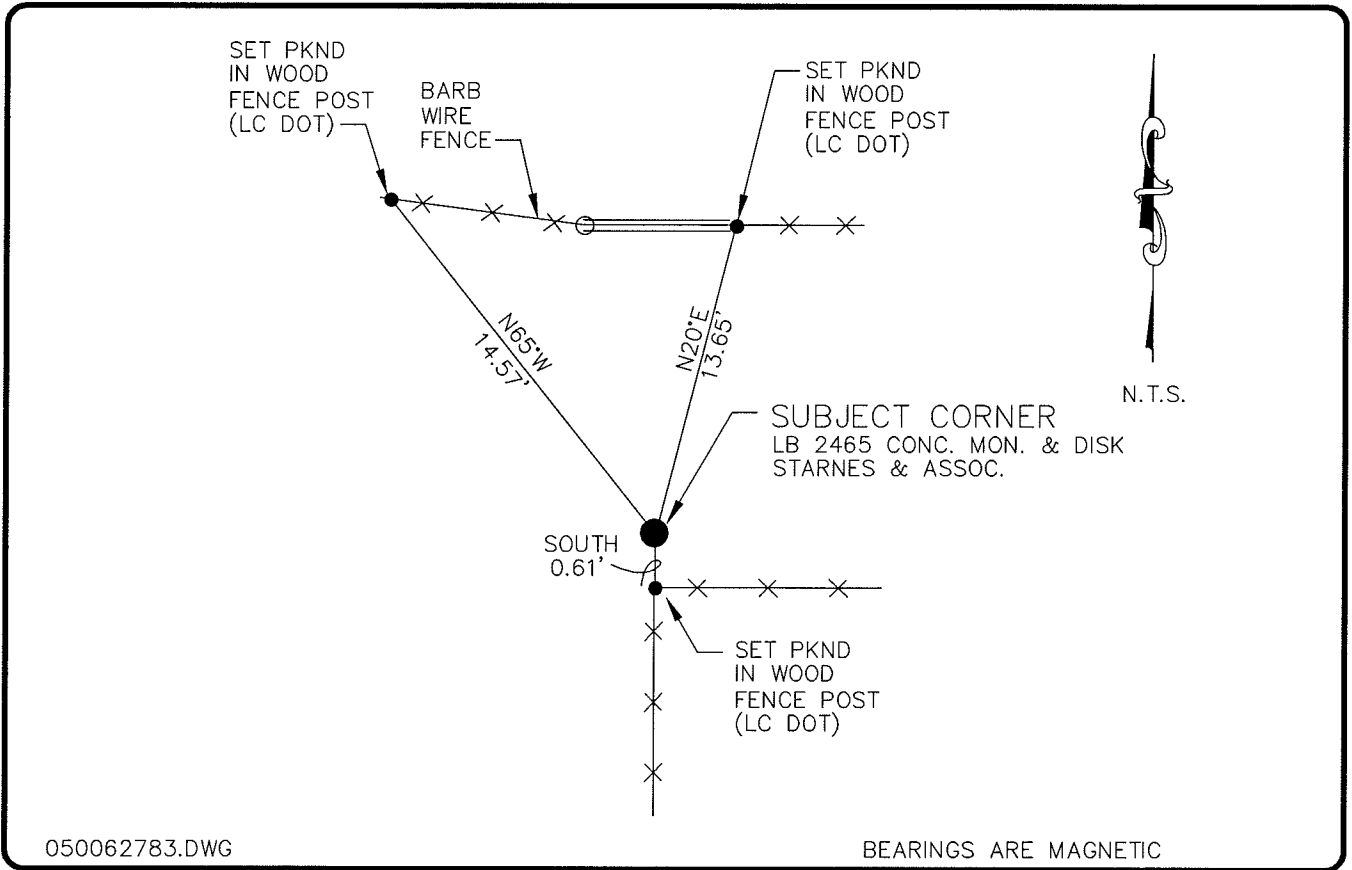


LAND CORNER RECORD

**PUBLIC WORKS
LEE COUNTY, FLORIDA**

Address - 1500 Monroe St., Ft. Myers, Fla. 33901

Phone : (239) 479-8900



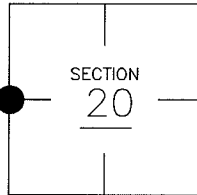
050062783.DWG

BEARINGS ARE MAGNETIC

COMMENTS:

CORNER DESCRIPTION

W 1/4 Corner
Section 20
Township 43
Range 25



FOUND CONC. MONUMENT STAMPED STARNES AND ASSOCIATES AT 1/4 CORNER USED AND ACCEPTED BY LOCAL SURVEYORS

HORIZONTAL POSITION INFORMATION

Florida West Zone, NAD 1983(1990 Adjustment)
Northing(ft) 866944.58 Easting(ft) 707644.74
Latitude 26°43'07.257033" Longitude 81°50'32.272499"
Scale Factor 0.99994421

EXISTING CERTIFIED CORNER RECORDS

Document No.	Date
<u>37250</u>	<u>10-26-90</u>
<u>68693</u>	<u>6-23-99</u>
<u>78420</u>	<u>4-9-03</u>

The above documents are based on FDEP Bureau of Surveying and Mapping Record Information.

I hereby certify the monument and accessories shown above were field located on 3-3-05.

Arthur W. Parsons, County Surveyor
Professional Surveyor and Mapper
Florida Certificate No. 2987
Date Signed 12-19-05

Lee County Department of Transportation
1500 Monroe Street
Fort Myers, Florida 33901
Phone: (239) 479-8900

POINT NO. 188

BLM REFERENCE NO. T43SR25E200340