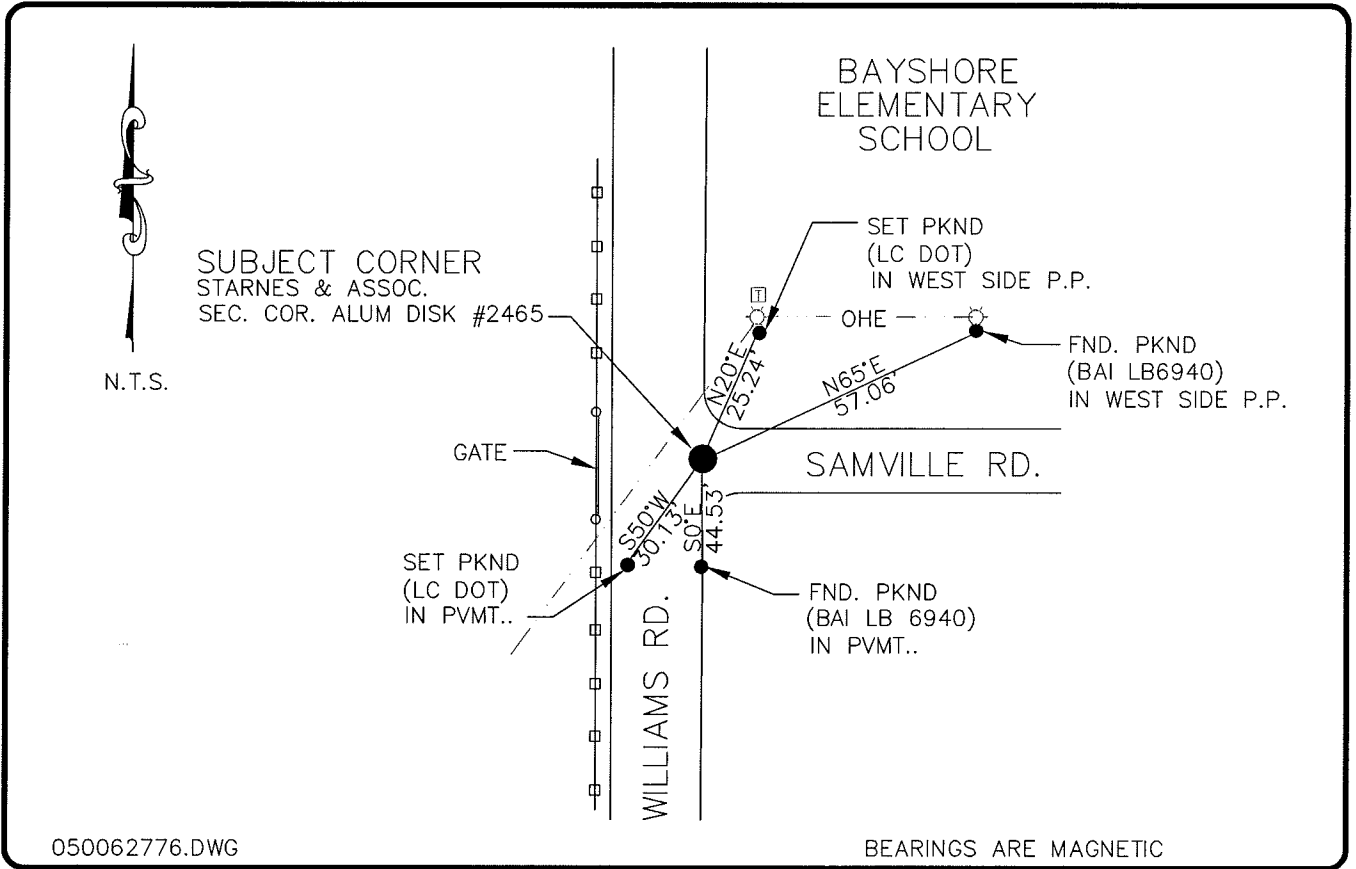


LAND CORNER RECORD

**PUBLIC WORKS
LEE COUNTY, FLORIDA**

Address - 1500 Monroe St., Ft. Myers, Fla. 33901

Phone : (239) 479-8900

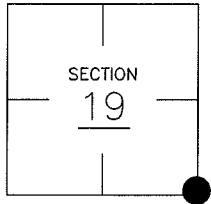


COMMENTS:

FOUND STARNES ALUM. DISK #2465
APPEARS TO BE A LOCALLY ACCEPTED
SECTION CORNER

CORNER DESCRIPTION

SE Corner
Section 19
Township 43
Range 25



HORIZONTAL POSITION INFORMATION

Florida West Zone, NAD 1983(1990 Adjustment)
 Northing(ft) 864272.95 Easting(ft) 707652.56
 Latitude 26°42'40.796701" Longitude 81°50'32.222730"
 Scale Factor 0.99994421

EXISTING CERTIFIED CORNER RECORDS

Document No.	Date
<u>37251</u>	<u>10-26-90</u>
<u>68701</u>	<u>6-28-99</u>
<u>78419</u>	<u>4-9-03</u>

The above documents are based on FDEP Bureau of Surveying and Mapping Record Information.

I hereby certify the monument and accessories shown above were field located on 7-6-04.

Arthur W. Parsons, County Surveyor
Professional Surveyor and Mapper
Florida Certificate No. 2987
Date Signed 12-19-05

Lee County Department of Transportation
1500 Monroe Street
Fort Myers, Florida 33901
Phone: (239) 479-8900

POINT NO. 42

BLM REFERENCE NO. T43SR25E200300