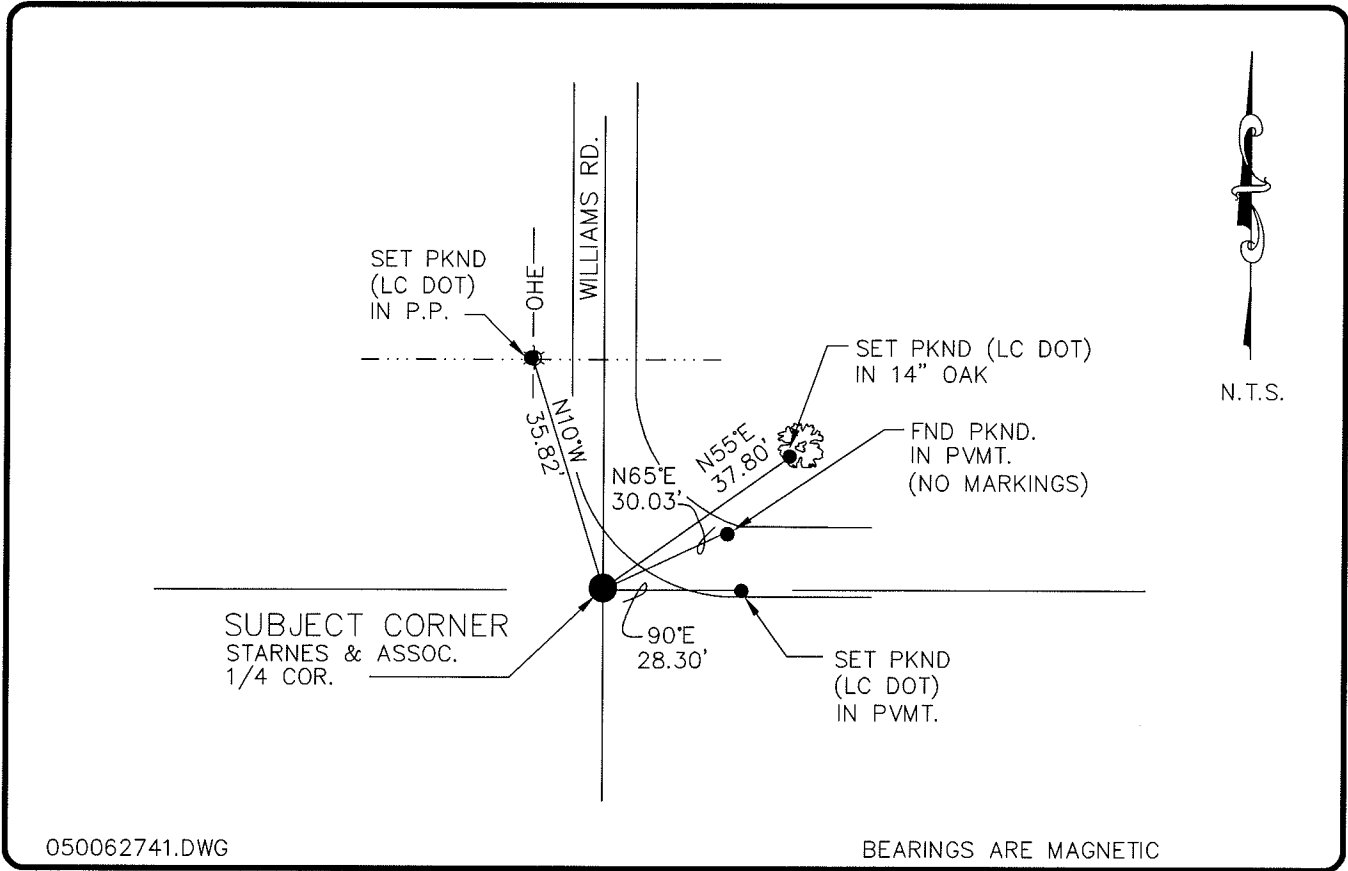


LAND CORNER RECORD

**PUBLIC WORKS
LEE COUNTY, FLORIDA**

Address - 1500 Monroe St., Ft. Myers, Fla. 33901

Phone : (239) 479-8900



050062741.DWG

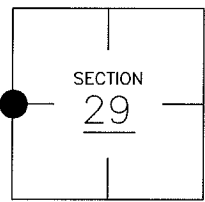
BEARINGS ARE MAGNETIC

COMMENTS:

PAUL DUKUS (INK ENG.) FINDS 4"X4" CONC. MON. CCR DOC. #18113 AND ACCEPTS AS W 1/4 COR. SEC. 29. IN 1990 THE 4"X4" CONC. MON. HAS BEEN REPLACED WITH A 4"X4" CONC. MON. STAMPED WITH STARNES AND ASSCS.

CORNER DESCRIPTION

W 1/4 Corner
Section 29
Township 43
Range 25



HORIZONTAL POSITION INFORMATION

Florida West Zone, NAD 1983(1990 Adjustment)
Northing(ft) 861652.47 Easting(ft) 707663.47
Latitude 26°42'14.843929" Longitude 81°50'32.136375"
Scale Factor 0.99994421

EXISTING CERTIFIED CORNER RECORDS	
Document No.	Date
<u>18113</u>	<u>12-22-83</u>
<u>37252</u>	<u>12-26-90</u>
<u>38711</u>	<u>2-11-91</u>
<u>68710</u>	<u>6-16-91</u>

The above documents are based on FDEP Bureau of Surveying and Mapping Record Information.

I hereby certify the monument and accessories shown above were field located on 7-7-04.

Arthur W. Parsons, County Surveyor
Professional Surveyor and Mapper
Florida Certificate No. 2987
Date Signed 12-19-05

Lee County Department of Transportation
1500 Monroe Street
Fort Myers, Florida 33901
Phone: (239) 479-8900

POINT NO. 109

BLM REFERENCE NO. T43SR25E200240