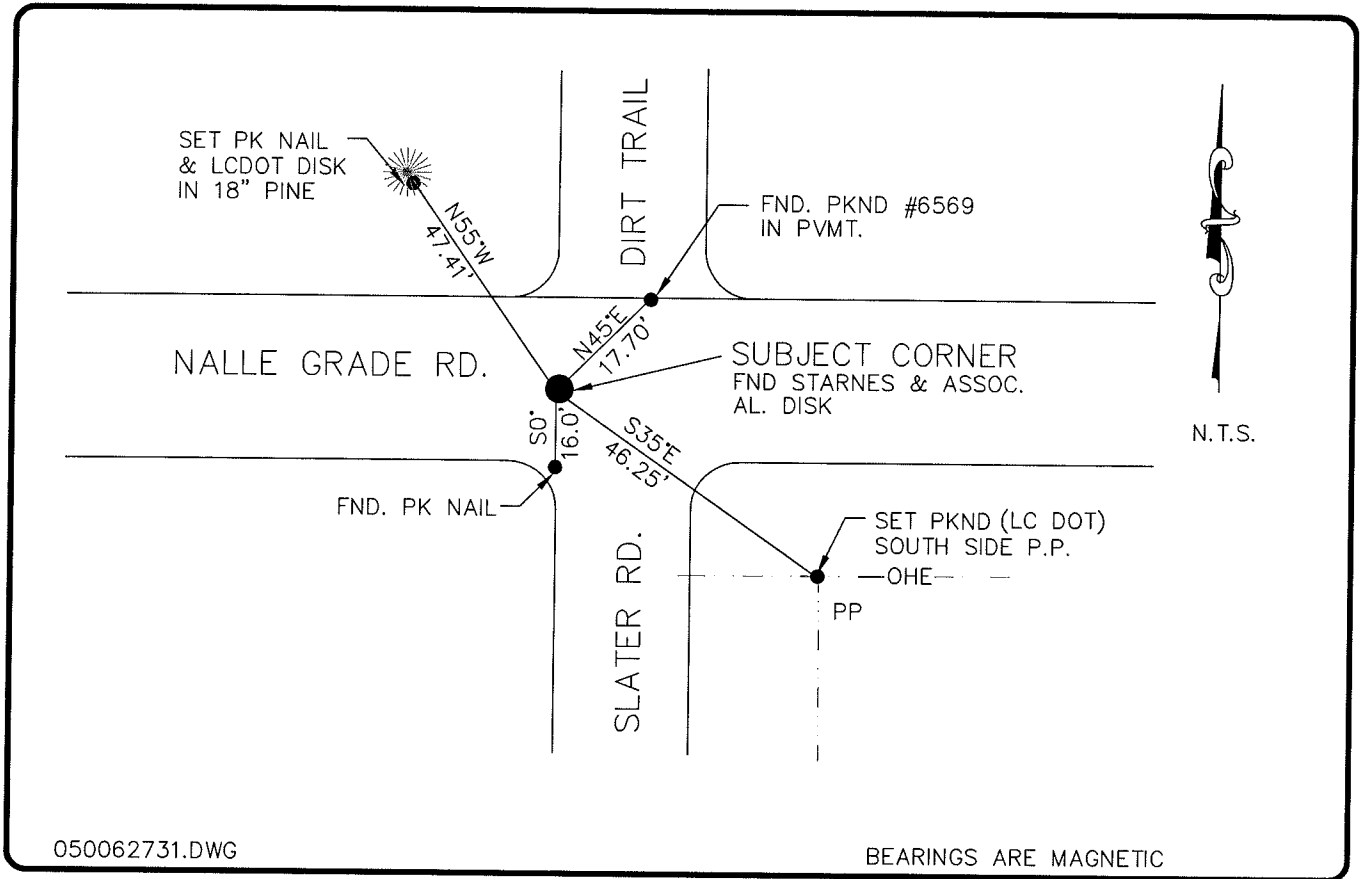


LAND CORNER RECORD

PUBLIC WORKS
LEE COUNTY, FLORIDA

Address - 1500 Monroe St., Ft. Myers, Fla. 33901

Phone : (239) 479-8900



050062731.DWG

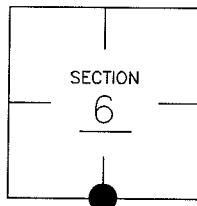
BEARINGS ARE MAGNETIC

COMMENTS:

STARNES LOCATED AND SET REFERENCE POINTS IN 1981 AND SUBSEQUENTLY REPLACED WITH AN ALUM. DISK.

CORNER DESCRIPTION

S 1/4 Corner
Section 6
Township 43
Range 25



HORIZONTAL POSITION INFORMATION

Florida West Zone, NAD 1983(1990 Adjustment)

Northing(ft) 880267.37 Easting(ft) 705004.60

Latitude 48°30'21.00193" Longitude 81°47'54.73242"

Scale Factor 0.99994389

EXISTING CERTIFIED CORNER RECORDS

Document No.	Date
<u>14742</u>	<u>12-4-81</u>

The above documents are based on FDEP Bureau of Surveying and Mapping Record Information.

I hereby certify the monument and accessories shown above were field located on 10-7-04.

Arthur W. Parsons, County Surveyor
Professional Surveyor and Mapper
Florida Certificate No. 2987
Date Signed 12-19-06

Lee County Department of Transportation
1500 Monroe Street
Fort Myers, Florida 33901
Phone: (239) 479-8900

POINT NO. 60

BLM REFERENCE NO. T43SR25E140600