

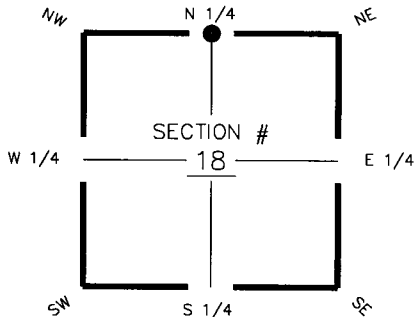
FLORIDA DEPARTMENT OF ENVIRONMENTAL PROTECTION CERTIFIED CORNER RECORD

094437

DOC. # _____

CORNER DESCRIPTION:

Depict corner with

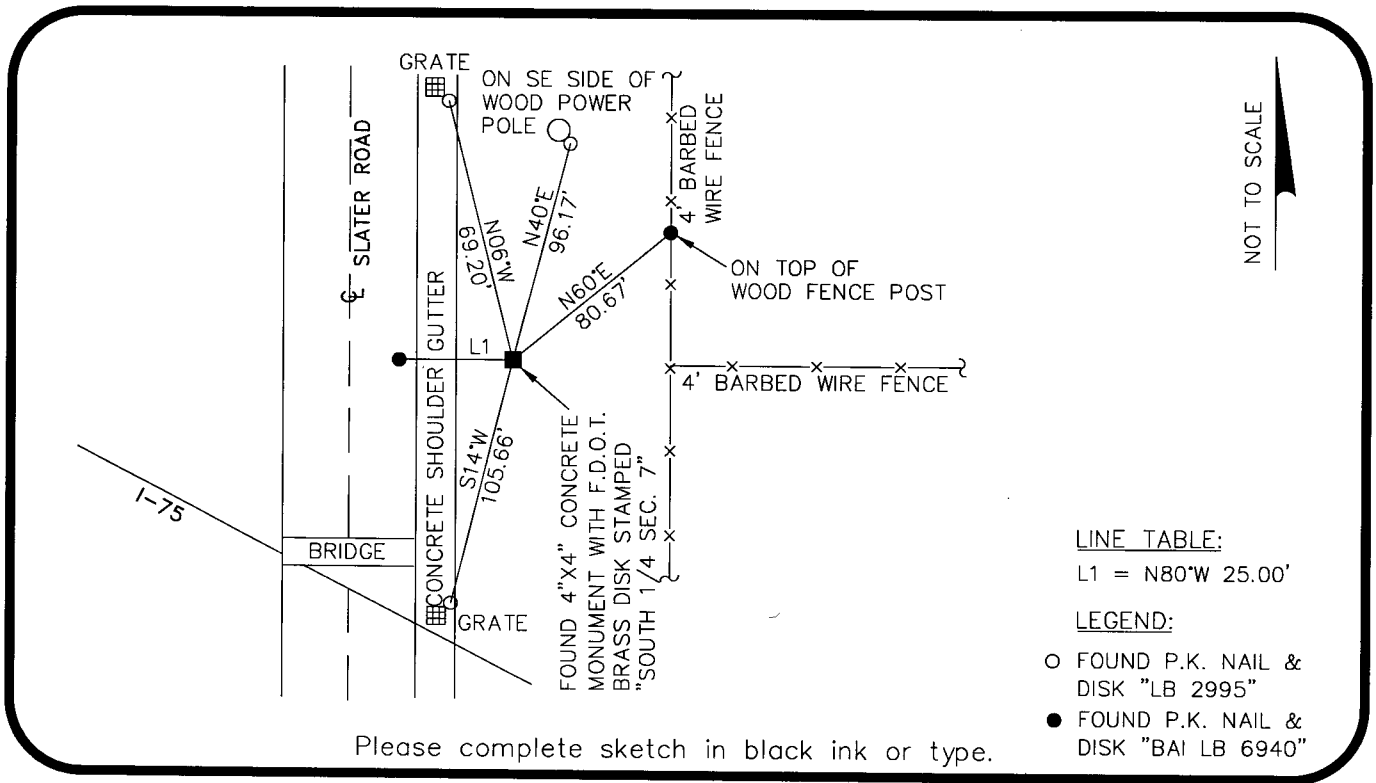


N 1/4 corner of Section 18
Twp 43 S, Rge 25 E
Tallahassee Base Meridian,
Charlotte County(s), Florida

MONUMENTATION DESCRIPTION (EVIDENCE FOUND OR METHOD TO SET)
FOUND 4"X4" CONCRETE MONUMENT WITH F.D.O.T. BRASS DISK STAMPED "SOUTH 1/4 SEC. 7"

HORIZONTAL POSITION INFORMATION (if determined):

Latitude 26°44'26.0610" Longitude 81°51'01.3641"
Y(NORTHING-Ft.) 874,898.302 X(EASTING-Ft.) 704,997.559 Zone FL West
Convergence 0°04'02.360" Scale factor 0.9999439103
Coordinate determination (circle one): Field traverse (GPS)
Horizontal datum (circle one): NAD27 NAD83(1986) (NAD83(1990)) other (explain) _____
Accuracy (circle one): 1st 2nd (3rd) other _____



LINE TABLE:
L1 = N80°W 25.00'

LEGEND:
○ FOUND P.K. NAIL & DISK "LB 2995"
● FOUND P.K. NAIL & DISK "BAI LB 6940"

Please complete sketch in black ink or type.

SURVEYORS CERTIFICATE:

I certify the monument and accessories indicated above were field located on 2/5/07

[Signature]
SIGNATURE _____ 5196
TBE Group, Inc. PSM NO. 6668
FIRM OR AGENCY LB NO. _____
380 Park Place Blvd., Suite 300 ADDRESS
Clearwater, Florida 33759 CITY, STATE, ZIP
727.531.3505 PHONE NUMBER
DATE 05/05/08

SEND ORIGINAL TO:
Department of Environmental Protection
Bureau of Surveying and Mapping
3900 Commonwealth Boulevard
Mail Station 105
Tallahassee, Florida 32399

Processed: 5-14-08 MB
B.L.M. - I.D. 140500
QUAD - I.D. 2215 Fort Myers

EMBOSSSED SEAL OVER SIGNATURE