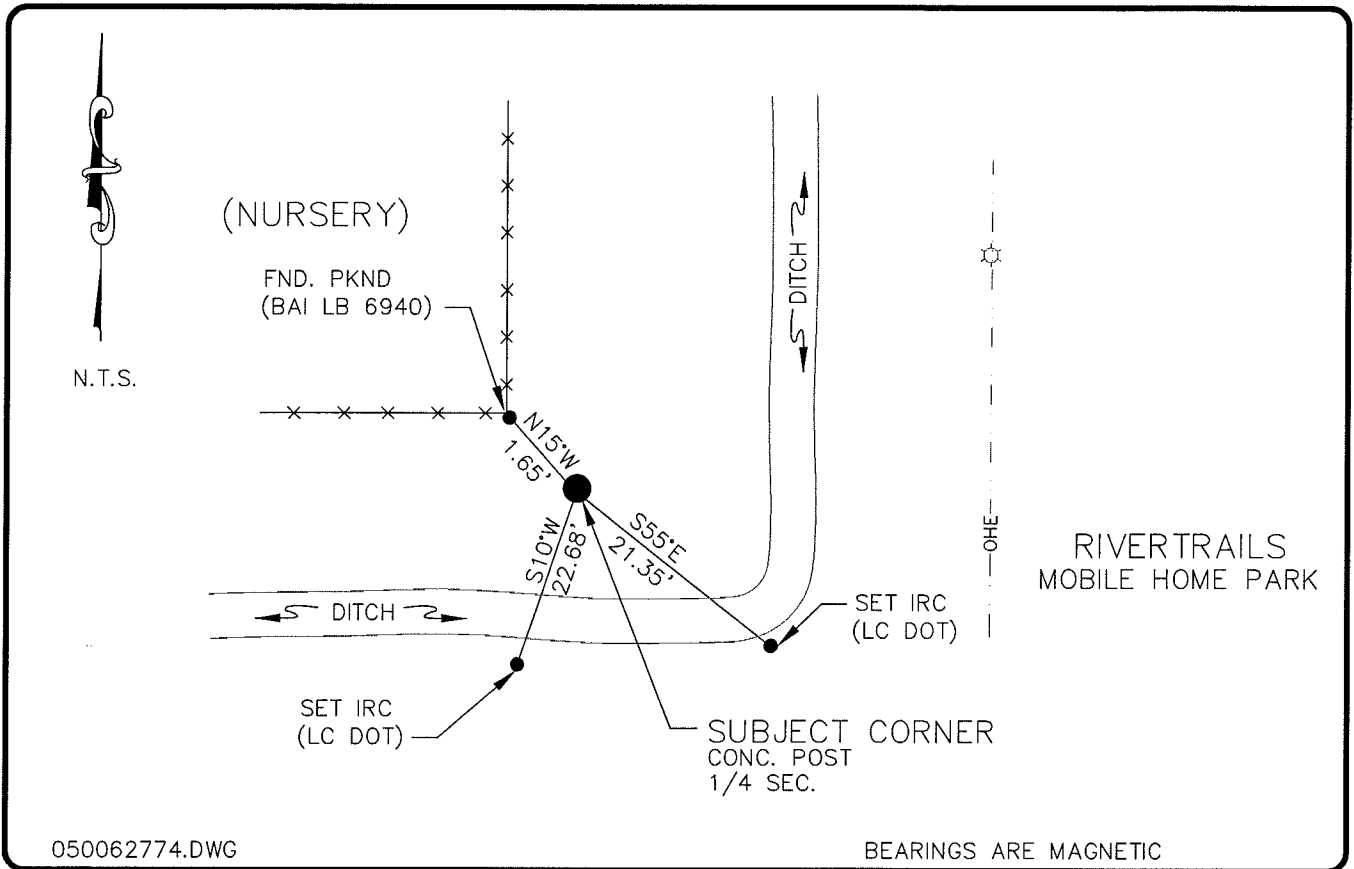


LAND CORNER RECORD

**PUBLIC WORKS
LEE COUNTY, FLORIDA**

Address - 1500 Monroe St., Ft. Myers, Fla. 33901

Phone : (239) 479-8900

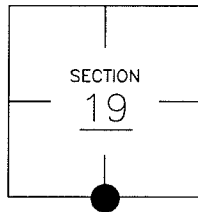


COMMENTS:

STARNES LOCATED AND REFERENCED AN EXIST. BROKEN CONC. MON. IN 1987 AND REPLACED WITH CONC. POST, NOW BROKEN OFF TOP.

CORNER DESCRIPTION

S 1/4 Corner
Section 19
Township 43
Range 25



HORIZONTAL POSITION INFORMATION

Florida West Zone, NAD 1983(1990 Adjustment)
Northing(ft) 864228.93 Easting(ft) 704974.45
Latitude 26°42'40.39004" Longitude 81°51'01.757158"
Scale Factor 0.99994390

EXISTING CERTIFIED CORNER RECORDS

Document No.	Date
<u>36562</u>	<u>3-13-87</u>
<u>68708</u>	<u>6-28-99</u>
<u>78421</u>	<u>4-9-03</u>

The above documents are based on FDEP Bureau of Surveying and Mapping Record Information.

I hereby certify the monument and accessories shown above were field located on 7-07-04.

Arthur W. Parsons, County Surveyor
Professional Surveyor and Mapper
Florida Certificate No. 2987
Date Signed 12-19-05

Lee County Department of Transportation
1500 Monroe Street
Fort Myers, Florida 33901
Phone: (239) 479-8900

POINT NO. 112

BLM REFERENCE NO. T43SR25E140300