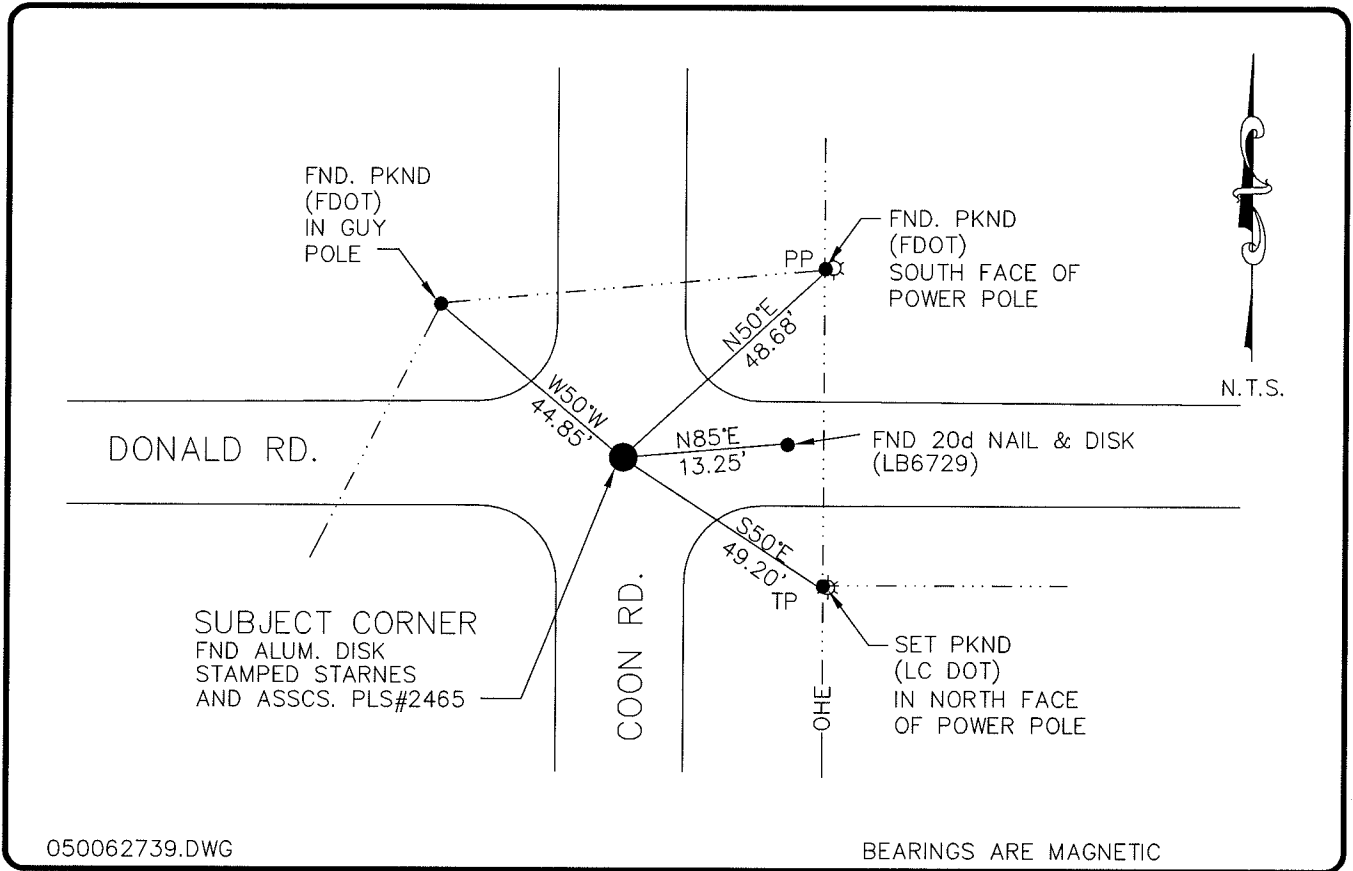


LAND CORNER RECORD

**PUBLIC WORKS
LEE COUNTY, FLORIDA**

Address - 1500 Monroe St., Ft. Myers, Fla. 33901

Phone : (239) 479-8900



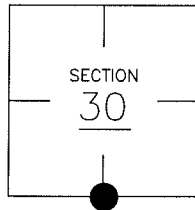
050062739.DWG

BEARINGS ARE MAGNETIC

COMMENTS:

CORNER DESCRIPTION

S 1/4 Corner
Section 30
Township 43
Range 25



STARNES FOUND A RAILROAD SPIKE UNDER PAVEMENT IN 1984 AND SET A PRM PLAT ON SURFACE. FDOT SHOWS A NAIL & DISK FOUND IN 1991 STAMPED WITH NO. 2465. FDOT SHOWS A 1/2" CAPPED IRON ROD IN 1999 STAMPED LS-2465.

HORIZONTAL POSITION INFORMATION

Florida West Zone, NAD 1983(1990 Adjustment)
Northing(ft) 858916.43 Easting(ft) 705002.96
Latitude 26°41'47.77830" Longitude 81°51'01.51158"
Scale Factor 0.99994391

EXISTING CERTIFIED CORNER RECORDS

Document No.	Date
<u>36568</u>	<u>9-22-84</u>
<u>38709</u>	<u>2-11-91</u>
<u>68712</u>	<u>6-9-99</u>

The above documents are based on FDEP Bureau of Surveying and Mapping Record Information.

I hereby certify the monument and accessories shown above were field located on 7-7-04.

Arthur W. Parsons, County Surveyor
Professional Surveyor and Mapper
Florida Certificate No. 2987
Date Signed 12-19-05

Lee County Department of Transportation
1500 Monroe Street
Fort Myers, Florida 33901
Phone: (239) 479-8900

POINT NO. 108

BLM REFERENCE NO. T43SR25E140200