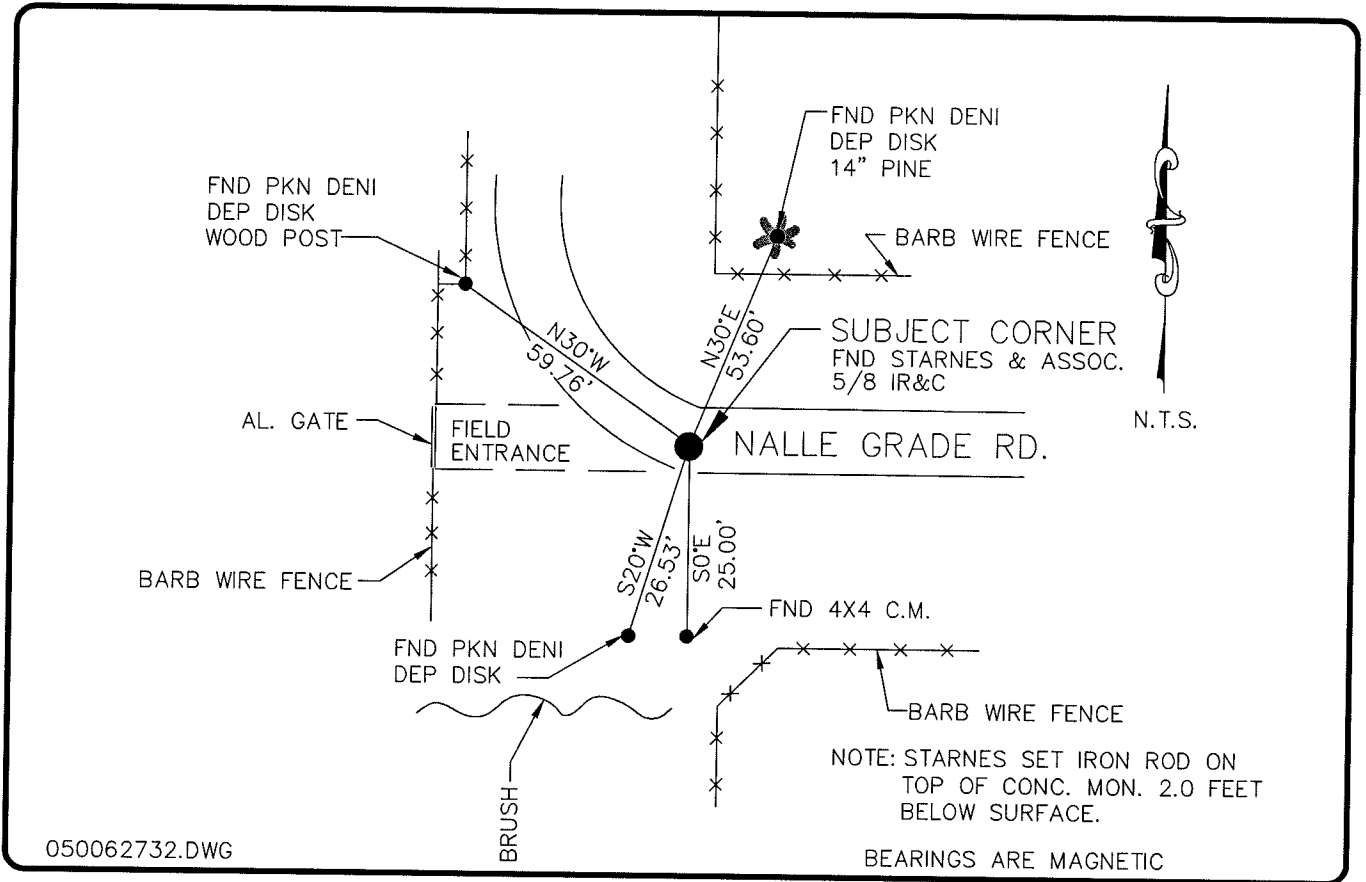


**LAND CORNER RECORD**

**PUBLIC WORKS  
LEE COUNTY, FLORIDA**

Address - 1500 Monroe St., Ft. Myers, Fla. 33901

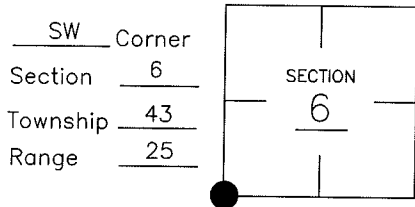
Phone : (239) 479-8900



050062732.DWG

**COMMENTS:**

**CORNER DESCRIPTION**



RECOVERED 5/8" IRON ROD AND CAP  
 STAMPED STARNES & ASSOCIATES.  
 CORNER WAS OCCUPIED AND REFERENCED  
 BY DEN HOMOLA IN 2002.

**HORIZONTAL POSITION INFORMATION**

Florida West Zone, NAD 1983(1990 Adjustment)  
 Northing(ft) 880220.96 Easting(ft) 702326.25  
 Latitude 26°45'18.80597" Longitude 81°51'30.76522"  
 Scale Factor 0.99994361

**EXISTING CERTIFIED CORNER RECORDS**

Document No.	Date
<u>36565</u>	<u>3-13-87</u>
<u>74750</u>	<u>1-3-02</u>

The above documents are based on FDEP Bureau of Surveying and Mapping Record Information.

I hereby certify the monument and accessories shown above were field located on 7-6-04.

**Arthur W. Parsons, County Surveyor**  
 Professional Surveyor and Mapper  
 Florida Certificate No. 2987  
 Date Signed 12-19-05

Lee County Department of Transportation  
 1500 Monroe Street  
 Fort Myers, Florida 33901  
 Phone: (239) 479-8900

POINT NO. 5

BLM REFERENCE NO. T43SR25E100600