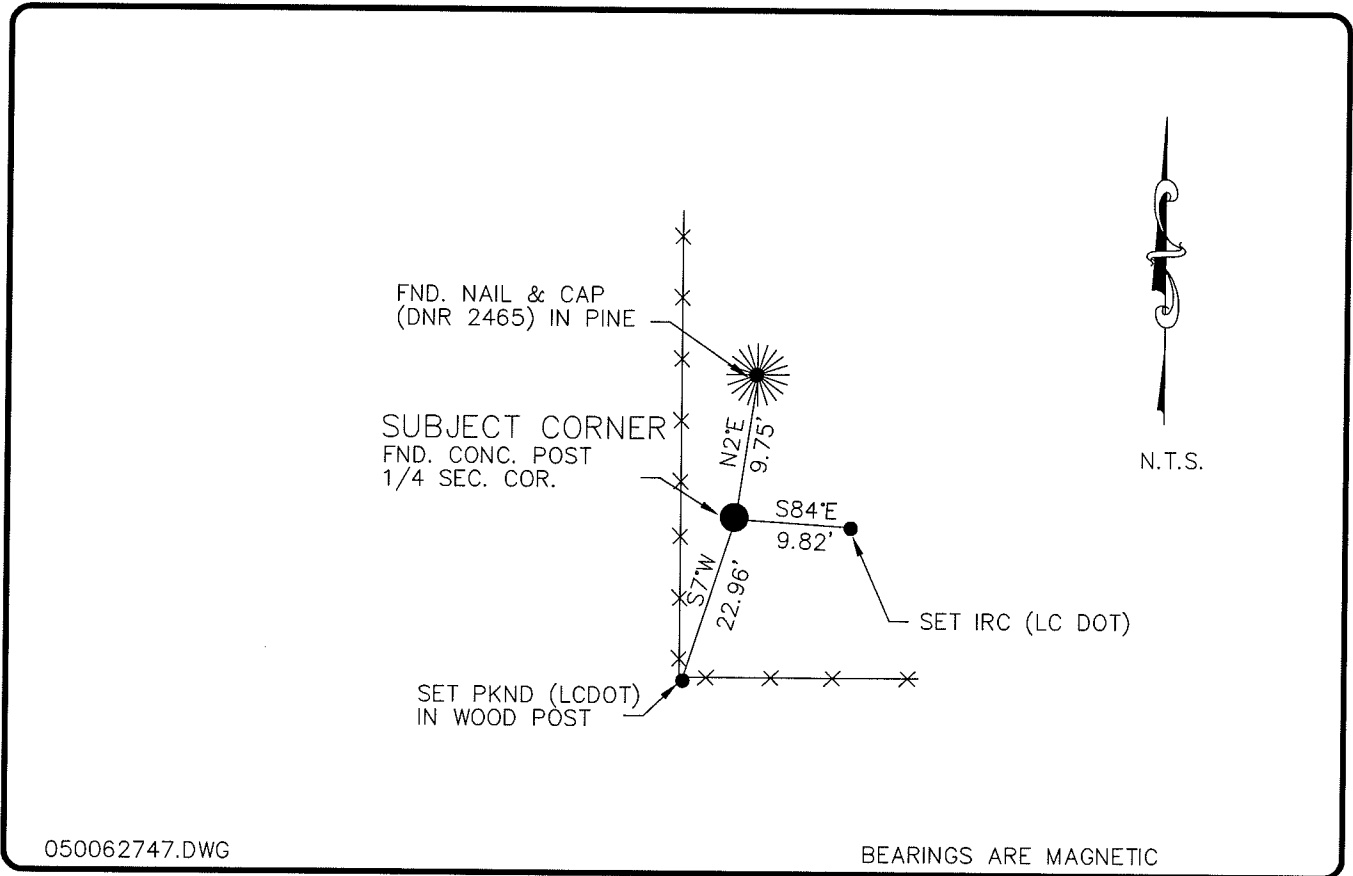


LAND CORNER RECORD

**PUBLIC WORKS
LEE COUNTY, FLORIDA**

Address - 1500 Monroe St., Ft. Myers, Fla. 33901

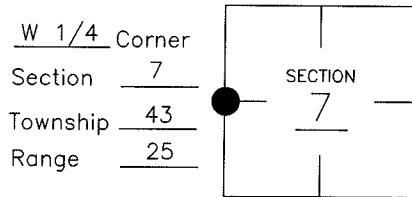
Phone : (239) 479-8900



COMMENTS:

CCR # 14745 SHOWS THAT STARNES FOUND, ACCEPTED AND REFERENCES 4"X4" CONC. POST IN 1982. LOCATION CONFORMS TO STARNES SECTION DRAWING.

CORNER DESCRIPTION



HORIZONTAL POSITION INFORMATION

Florida West Zone, NAD 1983(1990 Adjustment)
 Northing(ft) 877550.98 Easting(ft) 702318.62
 Latitude 26°44'52.363124" Longitude 81°51'30.881924"
 Scale Factor 0.999943618

EXISTING CERTIFIED CORNER RECORDS

Document No.	Date
<u>14745</u>	<u>4-18-82</u>

The above documents are based on FDEP Bureau of Surveying and Mapping Record Information.

I hereby certify the monument and accessories shown above were field located on 2-17-05.

Arthur W. Parsons, County Surveyor
 Professional Surveyor and Mapper
 Florida Certificate No. 2987
 Date Signed 12-19-05

Lee County Department of Transportation
 1500 Monroe Street
 Fort Myers, Florida 33901
 Phone: (239) 479-8900

POINT NO. 201

BLM REFERENCE NO. T43SR25E100540