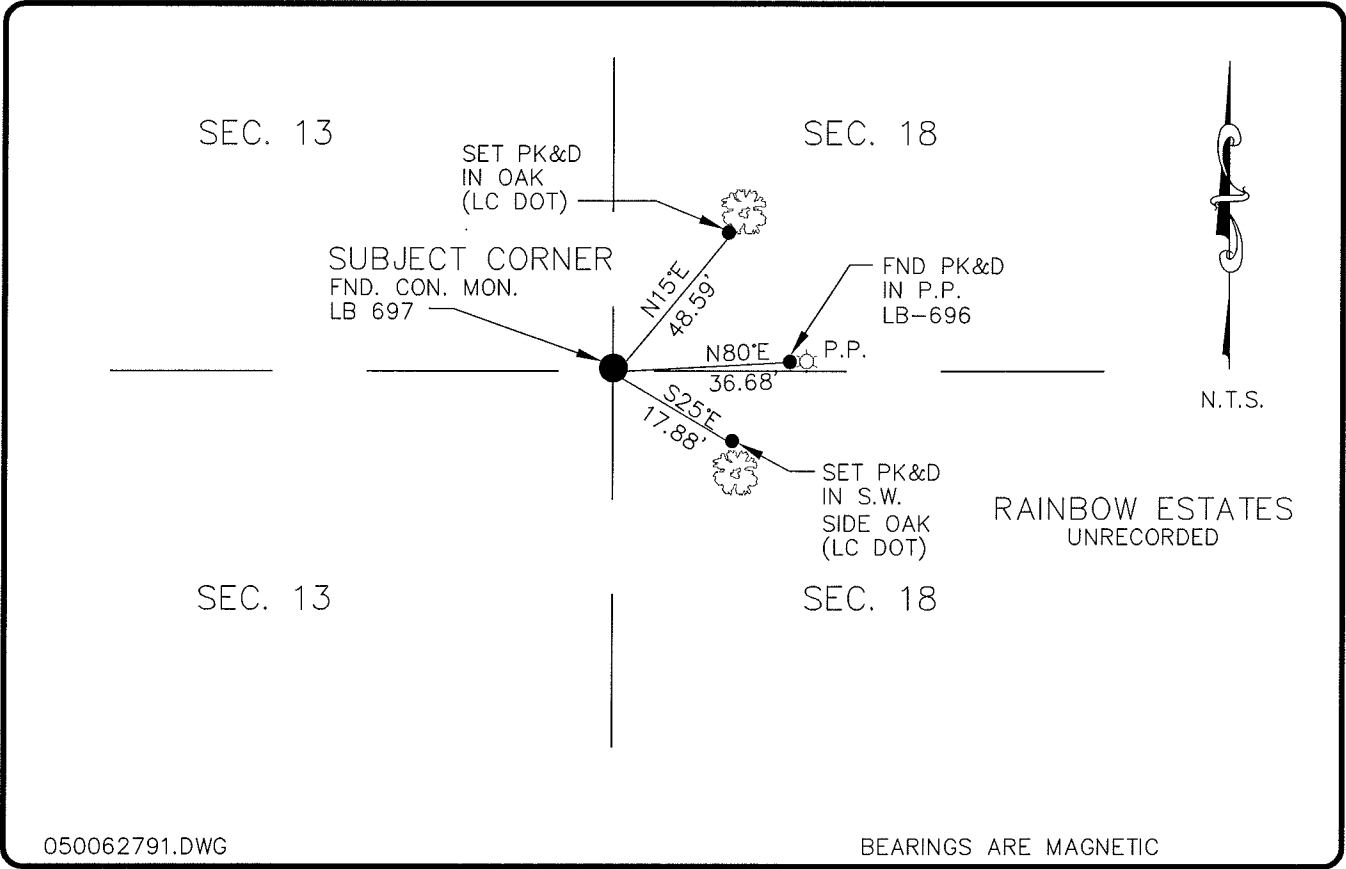


LAND CORNER RECORD

PUBLIC WORKS
LEE COUNTY, FLORIDA

Address - 1500 Monroe St., Ft. Myers, Fla. 33901

Phone : (239) 479-8900



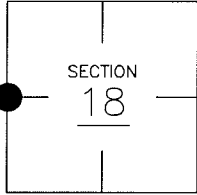
050062791.DWG

BEARINGS ARE MAGNETIC

COMMENTS:

CORNER DESCRIPTION

W. 1/4 Corner
 Section 18
 Township 43
 Range 25



FOUND 4"x4" CONC. MONUMENT AT WEST 1/4 CORNER, USED AS LOCALLY ACCEPTED CORNER.

HORIZONTAL POSITION INFORMATION

Florida West Zone, NAD 1983(1990 Adjustment)
 Northing(ft) 872203.30 Easting(ft) 702313.37
 Latitude 26°43'59.400452" Longitude 81°51'31.005341"
 Scale Factor 0.999943617

EXISTING CERTIFIED CORNER RECORDS

Document No.	Date
NO C.C.R FOUND	

The above documents are based on FDEP Bureau of Surveying and Mapping Record Information.

I hereby certify the monument and accessories shown above were field located on 3-22-05.

Arthur W. Parsons, County Surveyor
 Professional Surveyor and Mapper
 Florida Certificate No. 2987
 Date Signed 12-19-05

Lee County Department of Transportation
 1500 Monroe Street
 Fort Myers, Florida 33901
 Phone: (239) 479-8900

POINT NO. 230

BLM REFERENCE NO. T43SR25E100440