

FLORIDA DEPARTMENT OF ENVIRONMENTAL PROTECTION

CERTIFIED CORNER RECORD

DOC. # _____

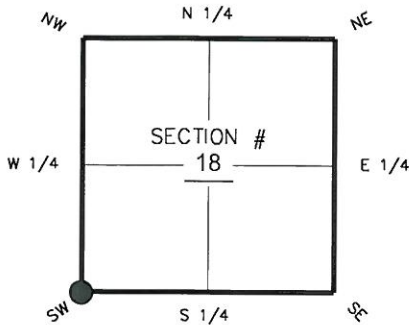
BLM. # T43SR25E100400

CORNER DESCRIPTION:

MONUMENTATION DESCRIPTION (EVIDENCE FOUND OR METHOD TO SET)

Depict corner with

FOUND 3-1/2"x3-1/2" CONCRETE MONUMENT WITH ALUMINUM DISK "STARNES & ASSOC. INC. PLS 2465"



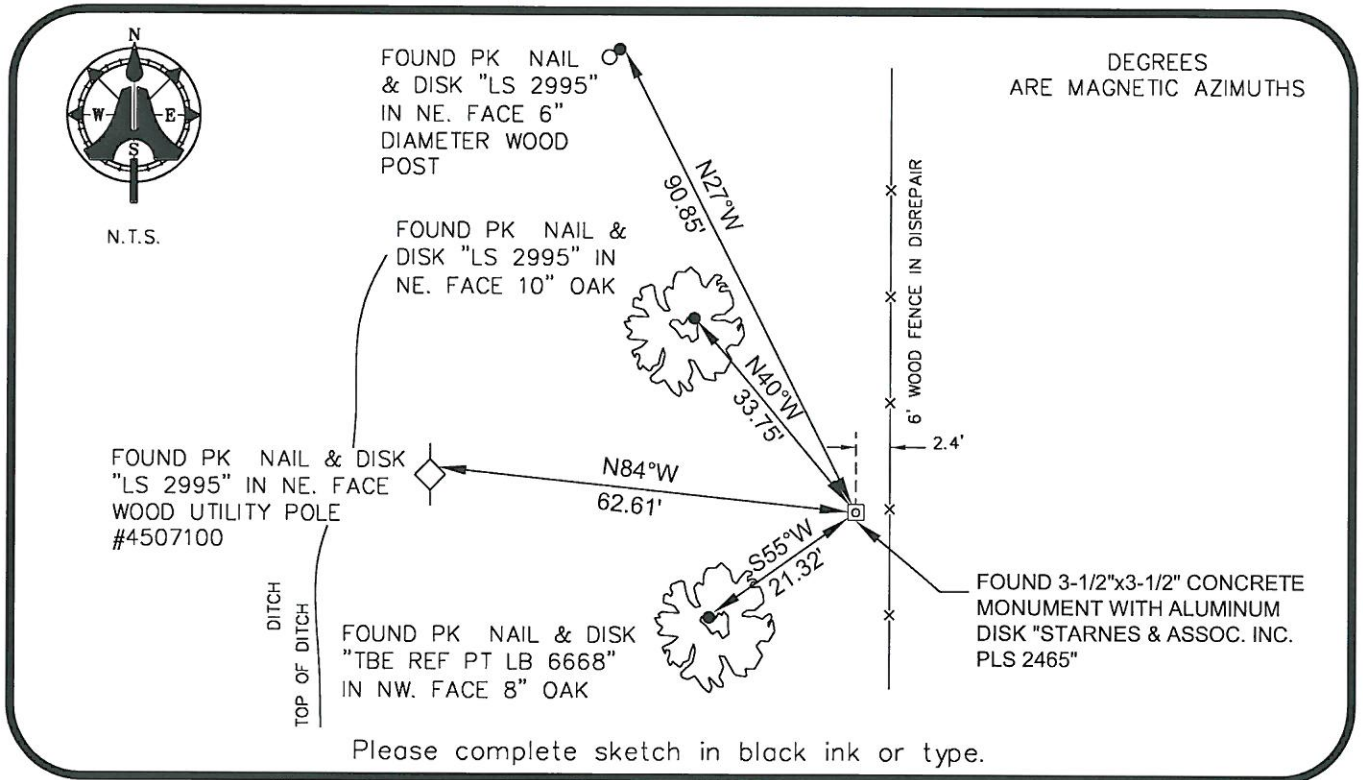
SW corner of Section 18
 Twp 43 S, Rge 25 E
 Tallahassee Base Meridian,
LEE County(s), Florida

PRIOR CCR'S:

DOC. # 094439, 008849

HORIZONTAL POSITION INFORMATION (if determined):

Latitude 26°43'32.8665" N Longitude 81°51'31.0109" W
 Y(NORTHING-Ft.) 869524.16 X(EASTING-Ft.) 702315.84 Zone WEST
 Convergence 00°03'48.9" Scale factor 0.99994362
 Coordinate determination: GPS
 Horizontal datum: NAD83(NSRS2007)
 Accuracy (circle one): 1st 2nd 3rd other 1:35,000



SURVEYORS CERTIFICATE:

I certify the monument and accessories indicated above were field located on 01-08-2013

BEN R. HOMOLA

Ben R. Homola _____ 3950
 SIGNATURE PSM NO.
 AIM ENGINEERING & SURVEYING, INC. 3114
 FIRM OR AGENCY LB NO.
 5300 LEE BOULEVARD
 LEHIGH ACRES ADDRESS FL 33971
 CITY STATE ZIP
 (239)332-4569 02/26/2013
 PHONE NUMBER DATE

SEND ORIGINAL TO:
 Department of Environmental Protection
 Bureau of Surveying and Mapping
 3900 Commonwealth Boulevard
 Mail Station 105
 Tallahassee, Florida 32399

D.E.P. USE ONLY
Processed: _____
B.L.M. - I.D. _____
QUAD - I.D. _____

EMBOSSSED SEAL OVER SIGNATURE