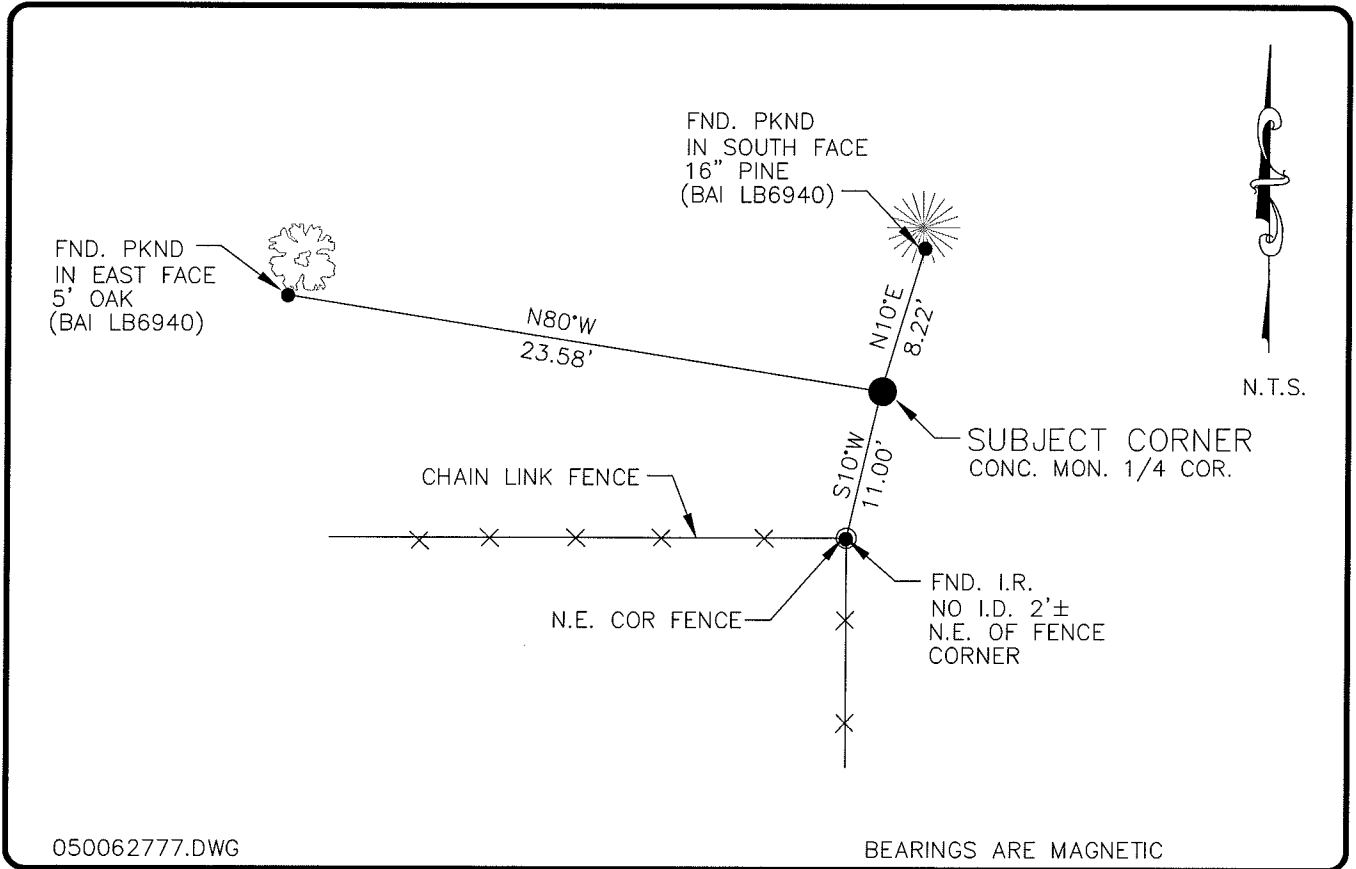


LAND CORNER RECORD

**PUBLIC WORKS
LEE COUNTY, FLORIDA**

Address - 1500 Monroe St., Ft. Myers, Fla. 33901

Phone : (239) 479-8900



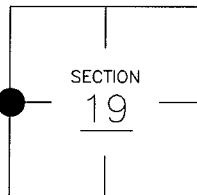
050062777.DWG

BEARINGS ARE MAGNETIC

COMMENTS:

CORNER DESCRIPTION

W 1/4 Corner
Section 19
Township 43
Range 25



CORNER FOUND IS A 4"x4" SQUARE CONC. MON. ALSO REFORMED ON C.C.R. #78423 BARRACO AND ASSOCIATES (SCOTT WHEELER)

HORIZONTAL POSITION INFORMATION

Florida West Zone, NAD 1983(1990 Adjustment)
Northing(ft) 866855.14 Easting(ft) 702313.68
Latitude 26°43'06.432648" Longitude 81°51'31.067610"
Scale Factor 0.99994361

EXISTING CERTIFIED CORNER RECORDS

Document No.	Date
<u>78423</u>	<u>4-9-2003</u>

The above documents are based on FDEP Bureau of Surveying and Mapping Record Information.

I hereby certify the monument and accessories shown above were field located on 12-7-04

Arthur W. Parsons
Arthur W. Parsons, County Surveyor
 Professional Surveyor and Mapper
 Florida Certificate No. 2987
 Date Signed 12-19-05

Lee County Department of Transportation
 1500 Monroe Street
 Fort Myers, Florida 33901
 Phone: (239) 479-8900

POINT NO. 148

BLM REFERENCE NO. T43SR25E100340