

FLORIDA DEPARTMENT OF ENVIRONMENTAL PROTECTION

CERTIFIED CORNER RECORD

DOC. # _____

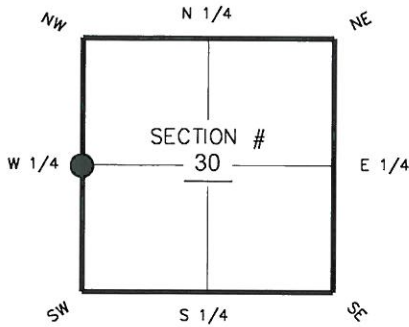
BLM. # T43SR25E100240

CORNER DESCRIPTION:

MONUMENTATION DESCRIPTION (EVIDENCE FOUND OR METHOD TO SET)

Depict corner with

FOUND 3-1/2"x3-1/2" CONCRETE MONUMENT
"STARNES & ASSOC. INC. PLS 2465"



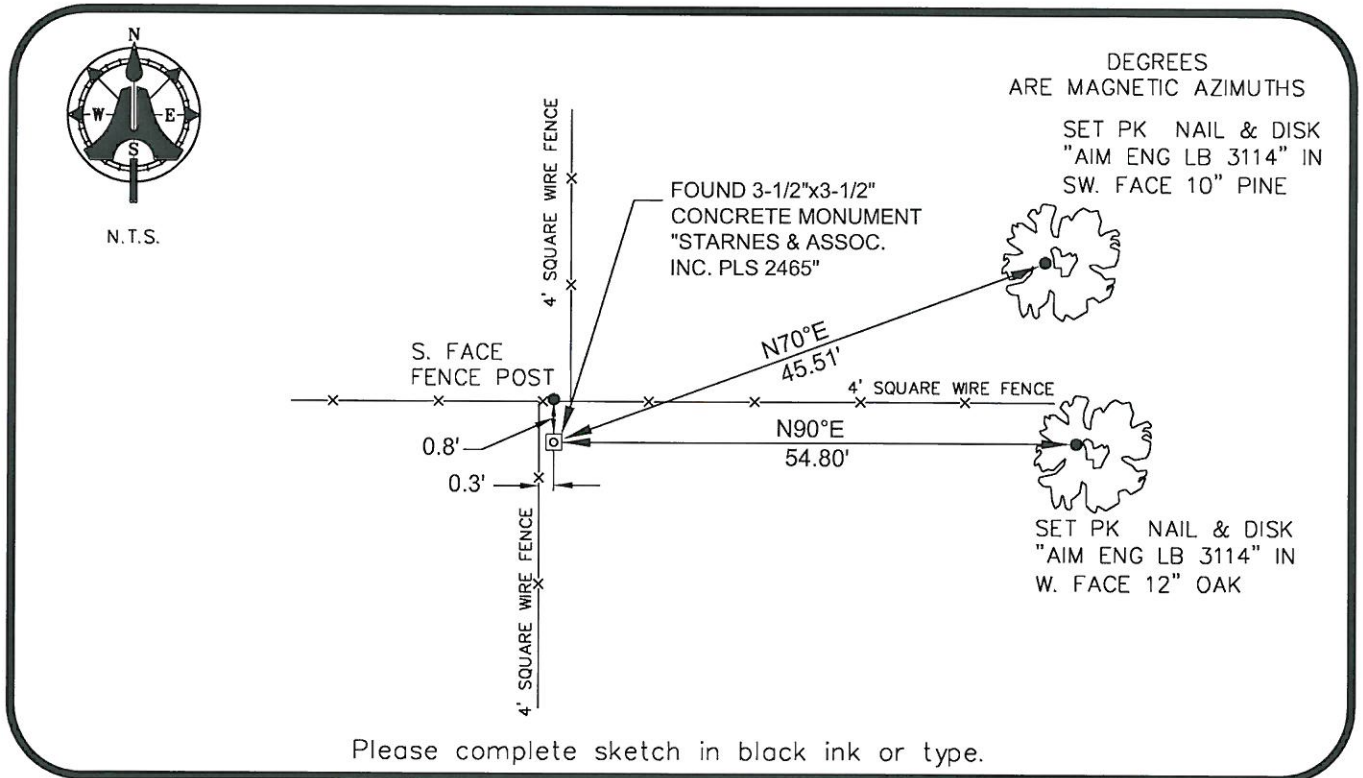
W 1/4 corner of Section 30
Twp 43 S, Rge 25 E
Tallahassee Base Meridian,
LEE County(s), Florida

PRIOR CCR'S:

DOC. # 068709, 038706

HORIZONTAL POSITION INFORMATION (if determined):

Latitude 26°42'13.6411" N Longitude 81°51'31.1835" W
Y(NORTHING-Ft.) 861524.74 X(EASTING-Ft.) 702309.06 Zone WEST
Convergence 00°03'48.7" Scale factor 0.99994362
Coordinate determination: GPS
Horizontal datum: NAD83(NSRS2007)
Accuracy (circle one): 1st 2nd 3rd other 1:35,000



Please complete sketch in black ink or type.

SURVEYORS CERTIFICATE:

I certify the monument and accessories indicated above were field located on 01-08-2013

BEN R. HOMOLA

Ben R. Homola 3950
SIGNATURE PSM NO.
AIM ENGINEERING & SURVEYING, INC. 3114
FIRM OR AGENCY LB NO.
5300 LEE BOULEVARD
LEHIGH ACRES ADDRESS FL 33971
CITY STATE ZIP
(239)332-4569 02/26/2013 DATE
PHONE NUMBER DATE

SEND ORIGINAL TO:
Department of Environmental Protection
Bureau of Surveying and Mapping
3900 Commonwealth Boulevard
Mail Station 105
Tallahassee, Florida 32399

D.E.P. USE ONLY
Processed: _____
B.L.M. - I.D. _____
QUAD - I.D. _____

EMBOSSSED SEAL OVER SIGNATURE