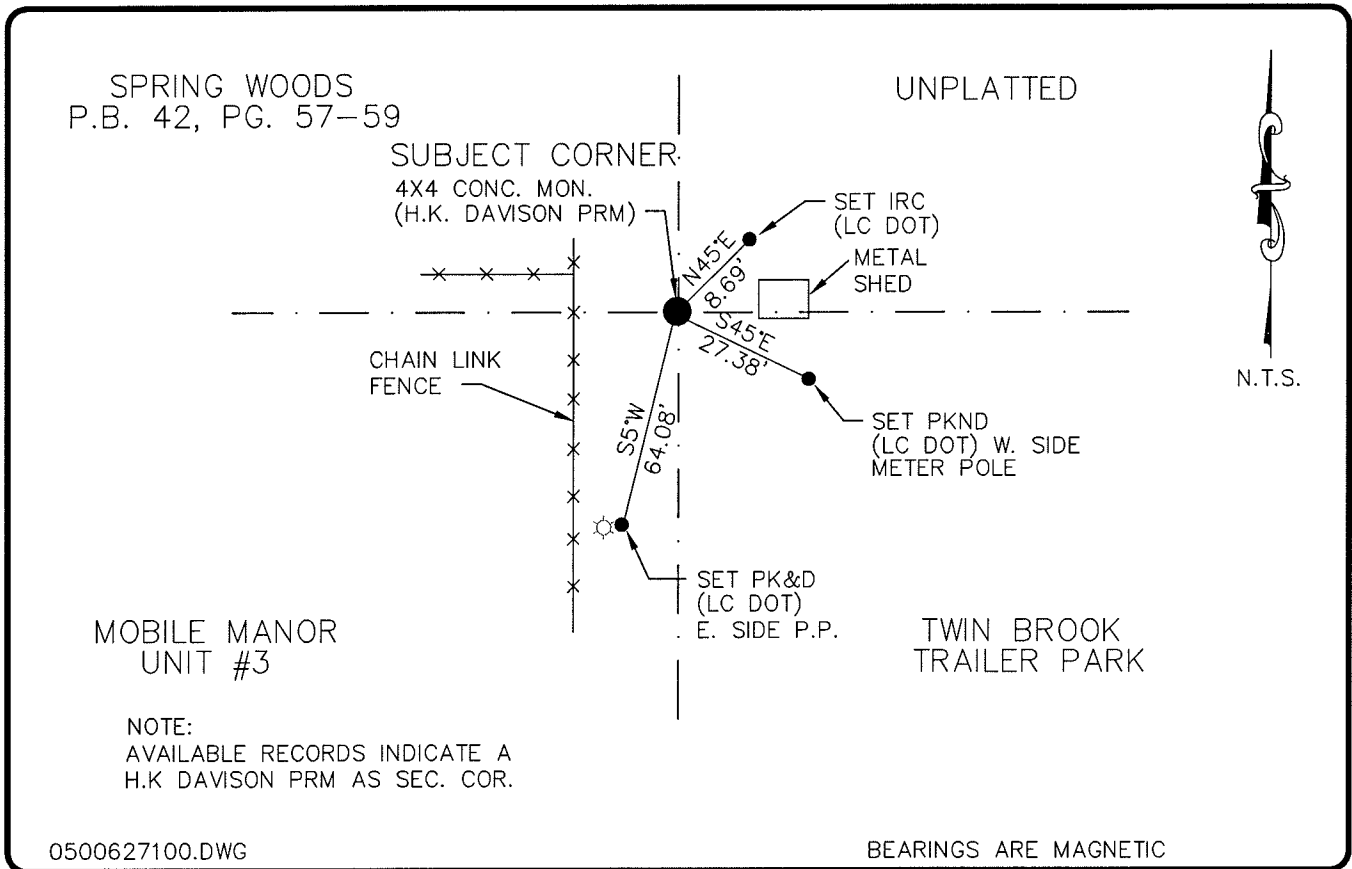


LAND CORNER RECORD

**PUBLIC WORKS
LEE COUNTY, FLORIDA**

Address - 1500 Monroe St., Ft. Myers, Fla. 33901

Phone : (239) 479-8900



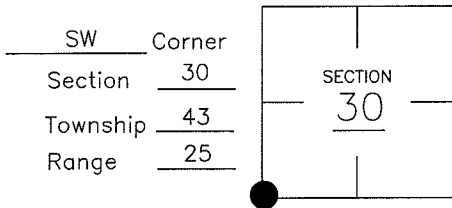
0500627100.DWG

BEARINGS ARE MAGNETIC

COMMENTS:

RON KERFOOT (INK EMG.) LOCATES 6"X6" CONC. MON. IN 1982 AND SET REFERENCE POINT S1'E IN POWER POLE AT 61.97'. FDOT LOCATES 6"X6" PRM IN 1991 AND FINDS DNR TAG IN POWER POLE SOUTH 62.1'. FDOT LOCATES 4"X4" CONC. MON. IN 1999 AND FINDS POWER POLE 62.1' SOUTH.

CORNER DESCRIPTION



HORIZONTAL POSITION INFORMATION

Florida West Zone, NAD 1983(1990 Adjustment)
 Northing(ft) 858865.01 Easting(ft) 702308.08
 Latitude 26°41'47.299300" Longitude 81°51'31.226725"
 Scale Factor 0.99994361

EXISTING CERTIFIED CORNER RECORDS

Document No.	Date
<u>15272</u>	<u>10-4-82</u>
<u>38707</u>	_____
<u>68711</u>	_____
_____	_____
_____	_____

The above documents are based on FDEP Bureau of Surveying and Mapping Record Information.

I hereby certify the monument and accessories shown above were field located on 7-6-04.

Arthur W. Parsons, County Surveyor
 Professional Surveyor and Mapper
 Florida Certificate No. 2987
 Date Signed 12-19-05

Lee County Department of Transportation
 1500 Monroe Street
 Fort Myers, Florida 33901
 Phone: (239) 479-8900

POINT NO. 53

BLM REFERENCE NO. T43SR25E 100 200