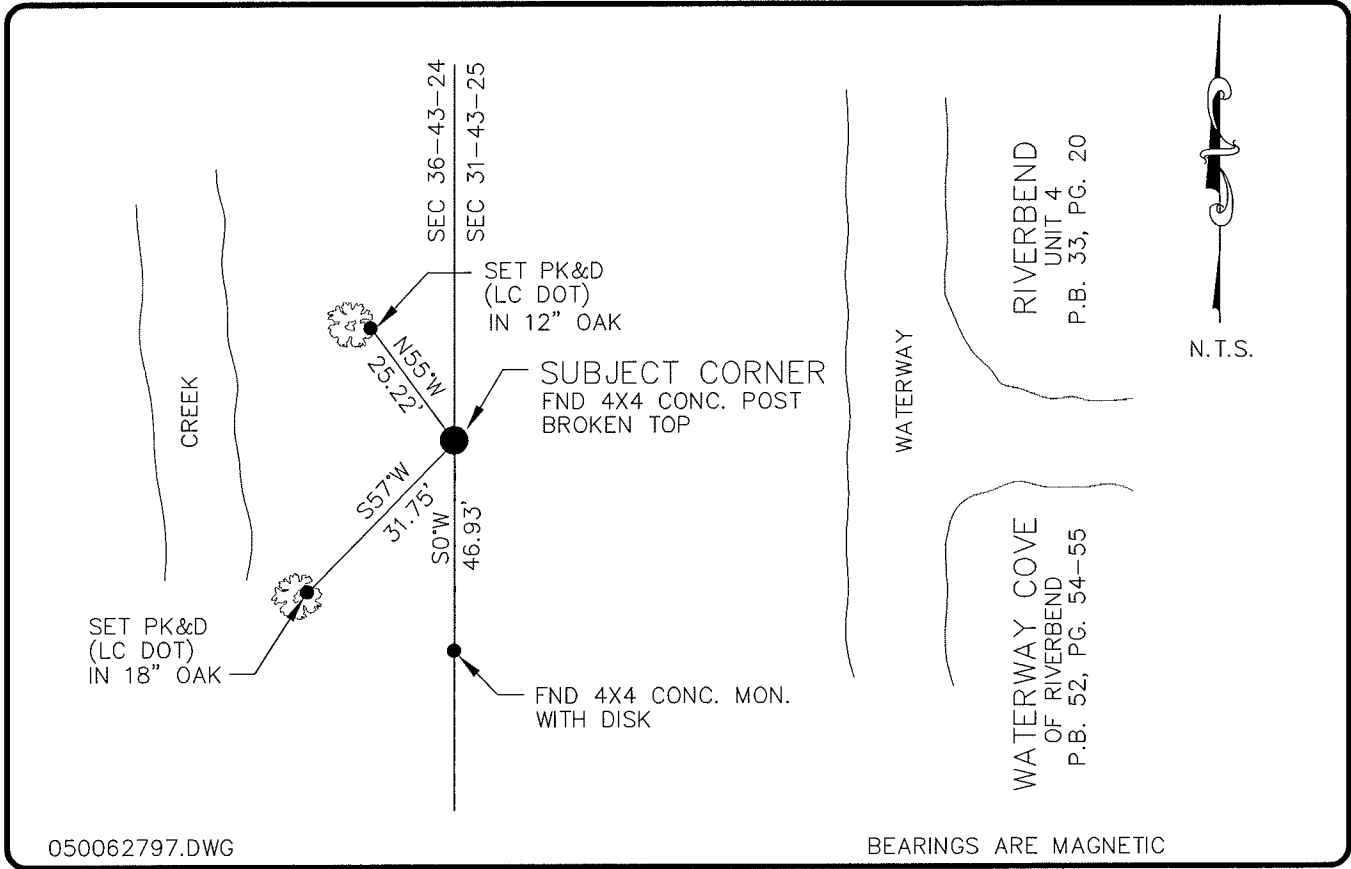


**LAND CORNER RECORD**

**PUBLIC WORKS  
LEE COUNTY, FLORIDA**

Address - 1500 Monroe St., Ft. Myers, Fla. 33901

Phone : (239) 479-8900



050062797.DWG

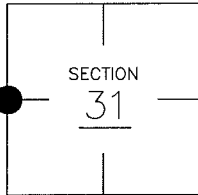
BEARINGS ARE MAGNETIC

**COMMENTS:**

A CONC. POST (BROKEN) WAS FOUND AT THE 1/4 CORNER THAT CONFORMS TO THE LOCATION SHOWN ON CCR #15265 AND 38704.

**CORNER DESCRIPTION**

W 1/4 Corner  
Section 31  
Township 43  
Range 25



**HORIZONTAL POSITION INFORMATION**

Florida West Zone, NAD 1983(1990 Adjustment)  
Northing(ft) 856273.35 Easting(ft) 702308.90  
Latitude 26°41'21.631338" Longitude 81°51'31.249643"  
Scale Factor 0.99994361

**EXISTING CERTIFIED CORNER RECORDS**

Document No.	Date
<u>15265</u>	<u>10-4-82</u>
<u>38704</u>	<u>2-11-91</u>

The above documents are based on FDEP Bureau of Surveying and Mapping Record Information.

I hereby certify the monument and accessories shown above were field located on 4-5-05.

**Arthur W. Parsons, County Surveyor**  
Professional Surveyor and Mapper  
Florida Certificate No. 2987  
Date Signed 12-19-05

Lee County Department of Transportation  
1500 Monroe Street  
Fort Myers, Florida 33901  
Phone: (239) 479-8900

POINT NO. 238

BLM REFERENCE NO. T43SR25E100140